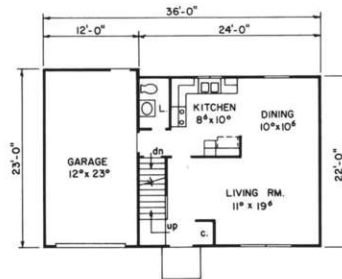
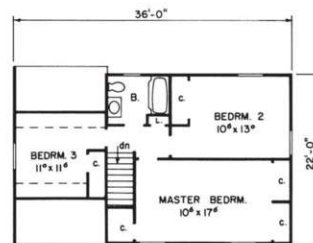




**Vernon**  
1194 Square Feet



First Floor 528 Sq. Ft.



Second Floor 666 Sq. Ft.



First Floor 780 Sq. Ft.



Second Floor 416 Sq. Ft.



**Vale**  
1196 Square Feet



## Sterling

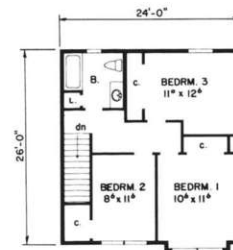
1218 Square Feet

### CONSTRUCTION TERMINOLOGY

**Truss** ■ A combination of structural members usually arranged in triangular units to form a rigid framework for spanning between load-bearing walls.



First Floor 585 Sq. Ft.



Second Floor 633 Sq. Ft.



First Floor 680 Sq. Ft.

## Morehead

1380 Square Feet



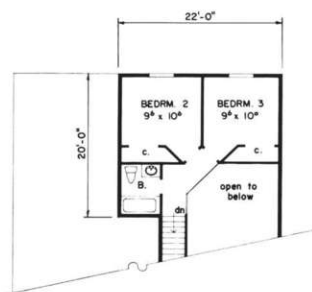
Second Floor 700 Sq. Ft.







First Floor 1017 Sq. Ft.



Second Floor 350 Sq. Ft.



## Roxbury

1367 Square Feet



*"An exciting and pleasant experience from start to finish — from selecting a house site and house plan, making floor plan changes, to the unlimited choices which made our home exactly what we wanted. The friendly and courteous people at Barden Homes and Vermont Built, Inc. made us feel comfortable and were nothing less than professional and responsive. We just want to have everyone who had anything to do with our new home over for dinner to thank them for a most pleasant experience. The personal attention given by Paul Truax and his family at Vermont Built, Inc. was phenomenal. Our decision to build with Barden was made when we met Paul and his wife, Colleen, for the first time, with their grandson, Alex, in tow, at one of their projects. We were sold as soon as we saw the quality of materials and workmanship, which were very evident since we previously had met with several other contractors. We cannot thank Barden Homes and Vermont Built, Inc. enough for what we now call home."*



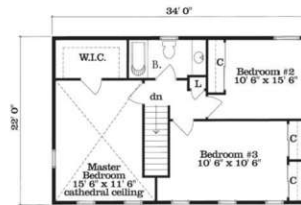
MIKE AND MARIE BLEAU



**Wellington**  
1496 Square Feet



First Floor 748 Sq. Ft.



Second Floor 748 Sq. Ft.

#### CONSTRUCTION TERMINOLOGY

**Sheathing** ■ The first covering of boards or material on the outside wall or roof prior to installing the finished siding or roofing.



First Floor 744 Sq. Ft.



Second Floor 768 Sq. Ft.

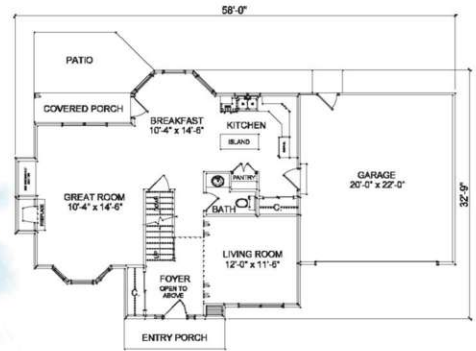
**Newberry**  
1512 Square Feet







**Rockford**  
1818 Square Feet



First Floor  
942 Sq. Ft.



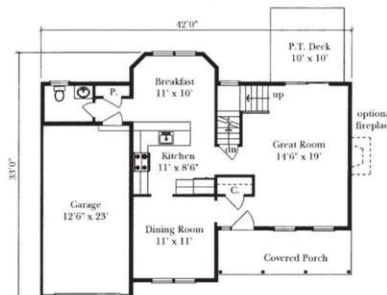
Second Floor  
876 Sq. Ft.



*"The thing that impressed us the most about Barden Homes was that we were able to act as our own general contractor and call the shots. We got far more for our money than other builders were able to offer."*

TOM AND MAUREEN SZPARA

**Princeton**  
1530 Square Feet

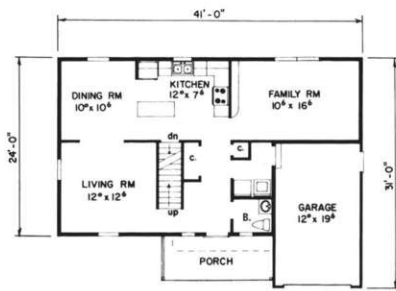


First Floor 780 Sq. Ft.



Second Floor 750 Sq. Ft.

## TWO-STORIES



First Floor 840 Sq. Ft.



Second Floor 724 Sq. Ft.



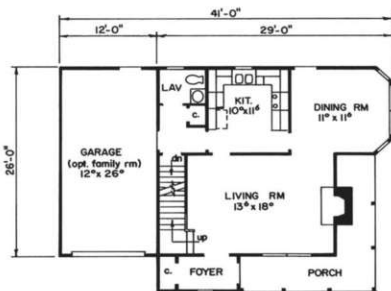
### Heatherwood

1564 Square Feet

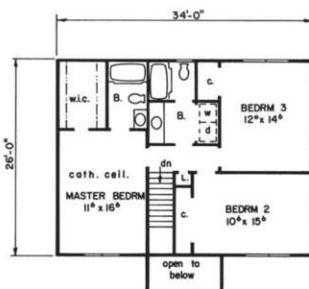


*Barden Homes brings the world of true custom home building into an affordable price range. Our unique architectural design resulted in total satisfaction with the entire home-building process from concept to completion. Barden's design staff and sales support did whatever it took to ensure our satisfaction by going "above and beyond" to make our "dream" home come true.*

ROBERT AND CARRIE MARTIN



First Floor 706 Sq. Ft.



Second Floor 884 Sq. Ft.

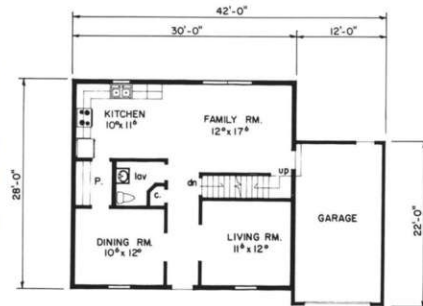
### Homestead

1590 Square Feet





**Saxton**  
1680 Square Feet



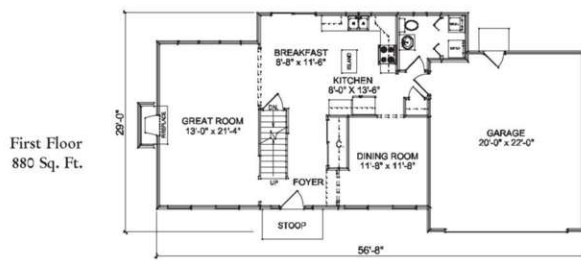
First Floor 840 Sq. Ft.



Second Floor 840 Sq. Ft.



**Brookfield**  
1696 Square Feet

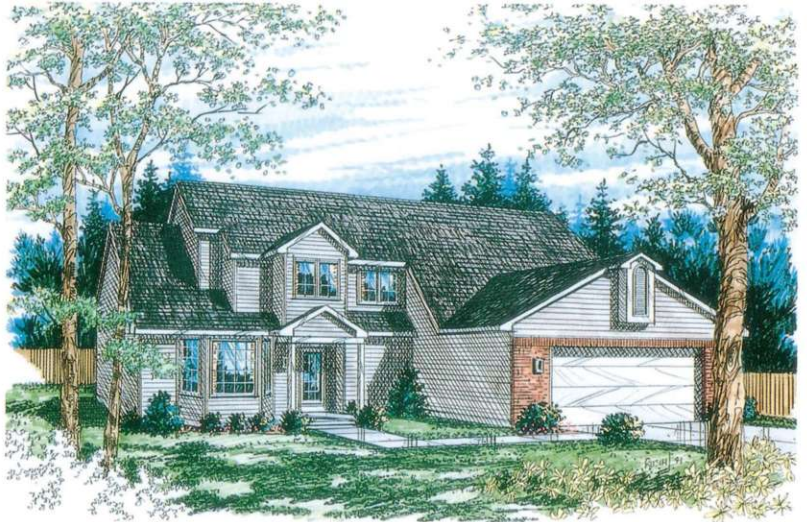
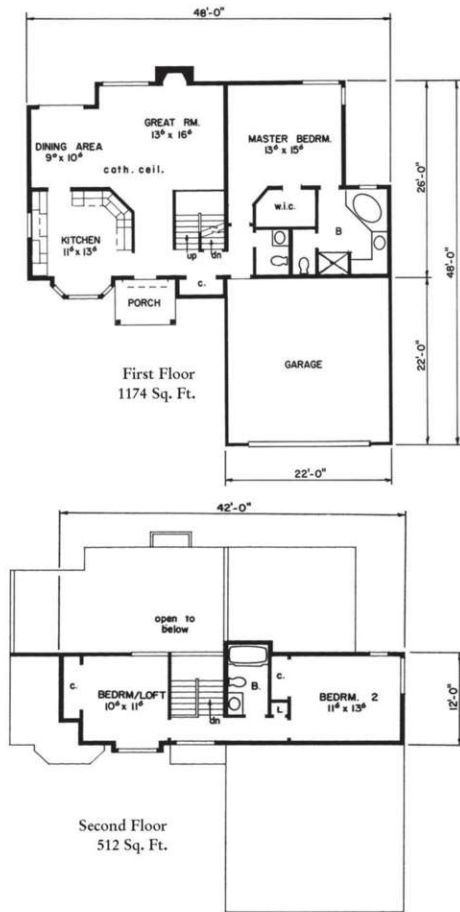


First Floor  
880 Sq. Ft.



Second Floor  
816 Sq. Ft.

## TWO-STORIES



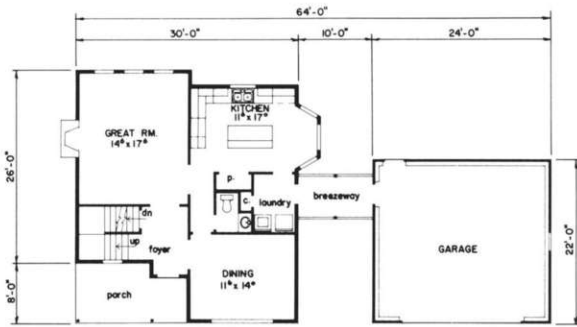
**Bridgeport**  
1686 Square Feet



**Westbury**  
1788 Square Feet







First Floor 907 Sq. Ft.



## Hampton

1814 Square Feet



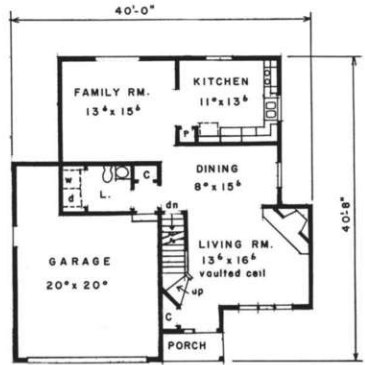
Second Floor 907 Sq. Ft.

### CONSTRUCTION TERMINOLOGY

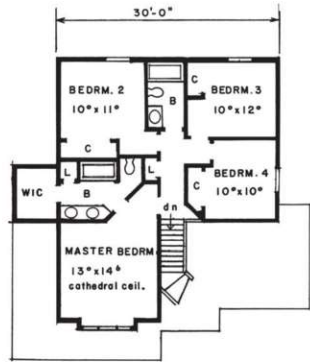
**Crawlspace** ■ A shallow, unfinished space beneath the first floor of a house that has no basement, used for visual inspection and access to pipes and ducts. Also, a shallow space in the attic, immediately under the roof.

## Winterhaven

1834 Square Feet

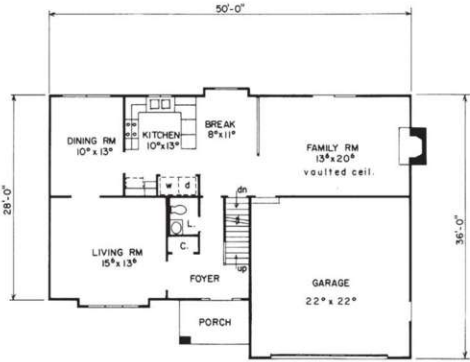


First Floor 924 Sq. Ft.



Second Floor 910 Sq. Ft.

TWO-STORIES



First Floor 1105 Sq. Ft.

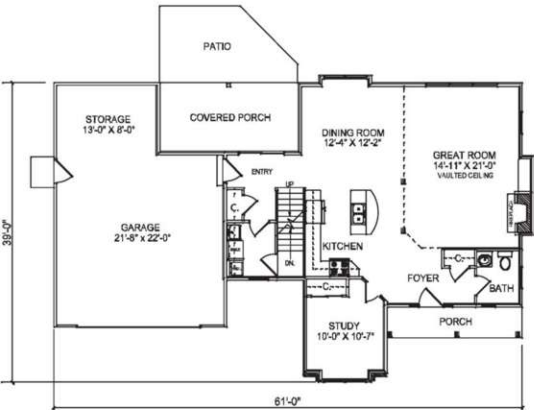


Second Floor 794 Sq. Ft.

Woodhaven  
1899 Square Feet



Ostrander's Orchard  
2039 Square Feet



First Floor 1141 Sq. Ft.



Second Floor 898 Sq. Ft.





First Floor 956 Sq. Ft.



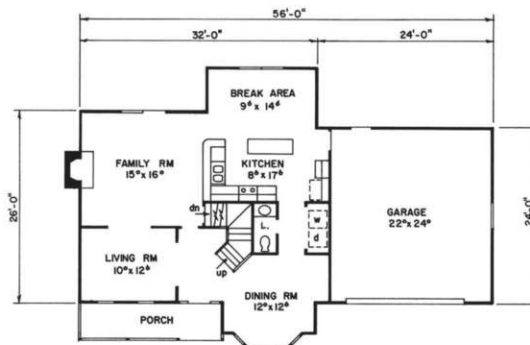
Second Floor 965 Sq. Ft.



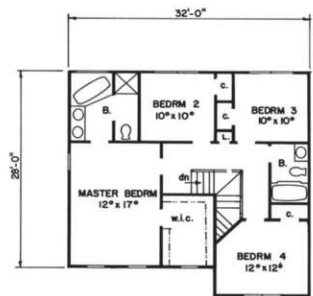
**Eastfield**  
1921 Square Feet



**Autumnview**  
1975 Square Feet



First Floor 1029 Sq. Ft.

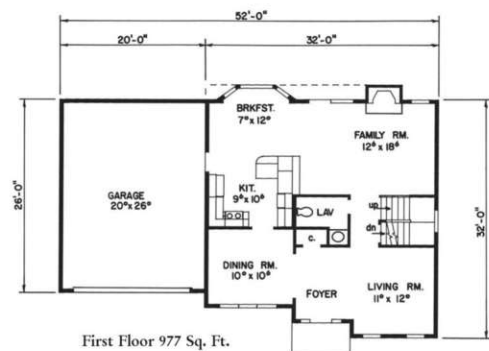


Second Floor 946 Sq. Ft.

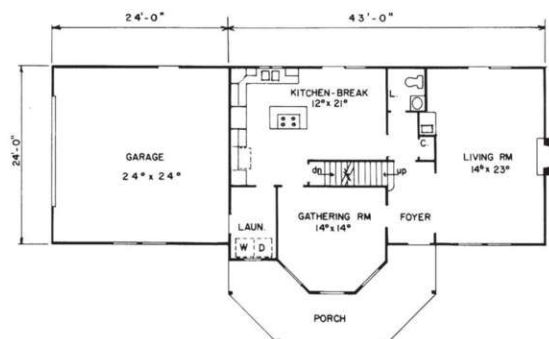
## TWO-STORIES



**Oxford**  
1986 Square Feet



**Wedgewood**  
2015 Square Feet







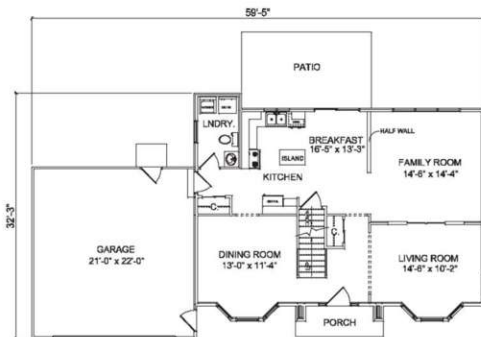
**Lindsay**  
2138 Square Feet



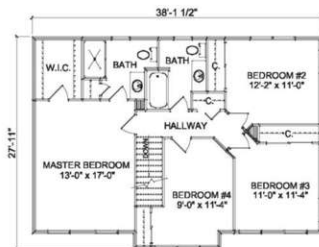
First Floor 1088 Sq. Ft.



Second Floor 1050 Sq. Ft.



First Floor 1026 Sq. Ft.



Second Floor 1012 Sq. Ft.

#### CONSTRUCTION TERMINOLOGY

**Headers** ■ Doublewood pieces supporting joists in a floor, or doublewood members placed on edge over windows and doors to transfer the roof and floor weight to the studs.

**Wilshire**  
2038 Square Feet





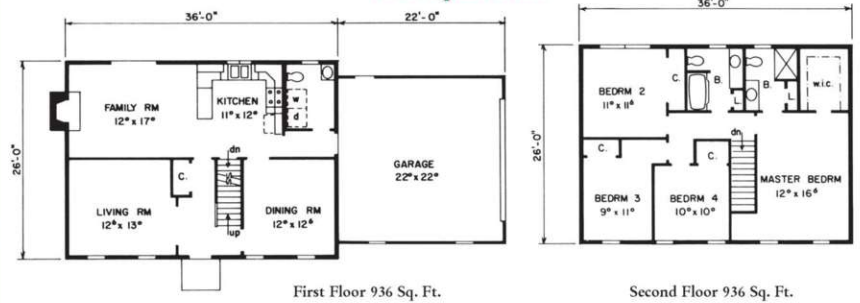
*"As I near the end of the first year in my Barden home, I wanted to send a note of appreciation for the efforts of your fine company and my builder. ... The quality of the material and workmanship was simply excellent. ... And, most importantly, the cost-savings from utilizing Barden's panelized construction were truly significant over the bids that I received from builders offering more conventional on-site construction! I greatly appreciated the way my builder super-vised the entire construction process, from excavation to trim. ... I want to thank everyone at Barden Homes and McLachlan Builders whose efforts have resulted in the completion of my "dream home." I can strongly recommend that any person contemplating a new home should consider Barden Homes, particularly one built by McLachlan Builders!"*

LAWRENCE CLAUS



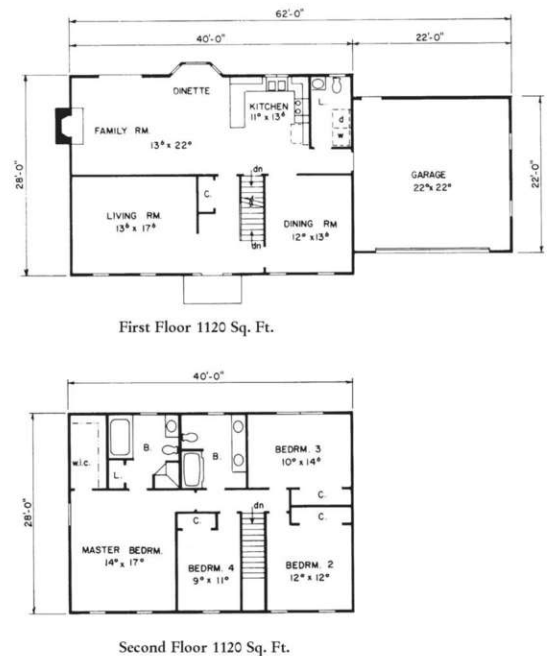
## Ethan Allen I

1872 Square Feet



## Ethan Allen II

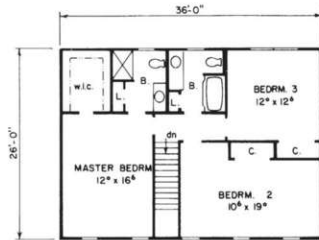
2240 Square Feet







First Floor 1072 Sq. Ft.



Second Floor 936 Sq. Ft.

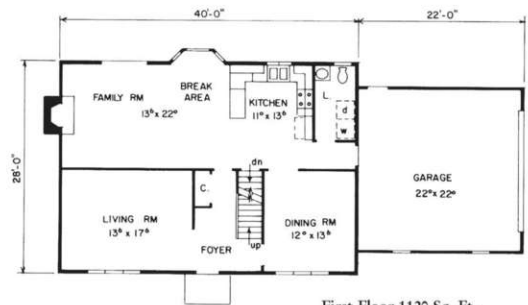
## Ethan Allen III

2008 Square Feet

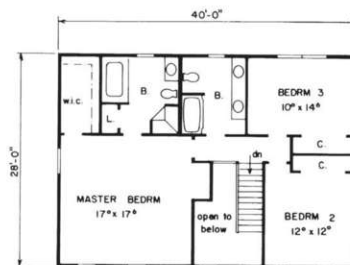


## Ethan Allen IV

2140 Square Feet



First Floor 1120 Sq. Ft.



Second Floor 1020 Sq. Ft.

TWO-STORIES



**Paskell's Place**  
2347 Square Feet



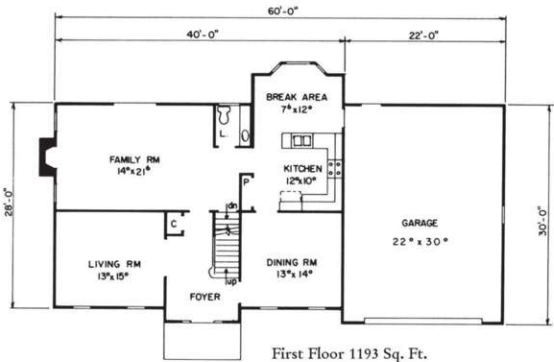
First Floor  
1250 Sq. Ft.



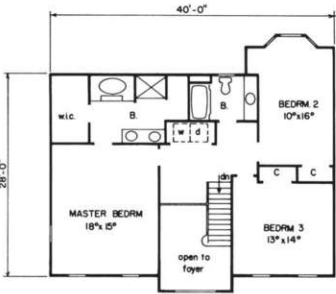
Second Floor  
1097 Sq. Ft.



**Hartford**  
2265 Square Feet



First Floor 1193 Sq. Ft.



Second Floor 1072 Sq. Ft.