



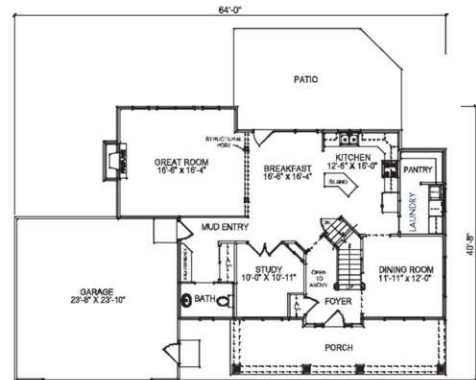
First Floor 1300 Sq. Ft.



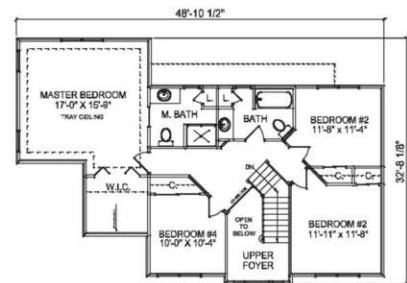
Second Floor 1020 Sq. Ft.



**Williamstown**  
2320 Square Feet



First Floor 1287 Sq. Ft.



Second Floor 1096 Sq. Ft.



**Brentwood**  
2383 Square Feet

## Hughston's Hideaway

2391 Square Feet



First Floor 1401 Sq. Ft.



Second Floor 990 Sq. Ft.



First Floor 1692 Sq. Ft.



Second Floor 706 Sq. Ft.

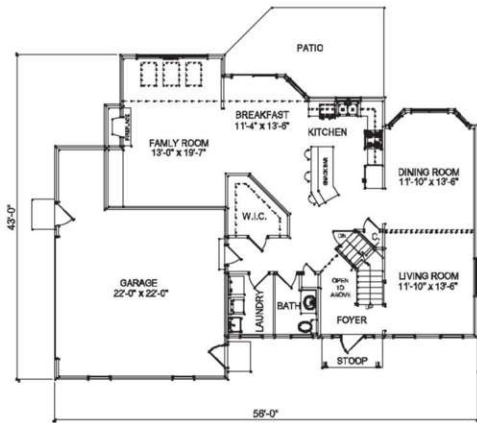
### CONSTRUCTION TERMINOLOGY

**Foundation** ■ Lower parts of walls on which the structure is built. Foundation walls of masonry, or concrete are usually below ground level.



## Moreland

2398 Square Feet

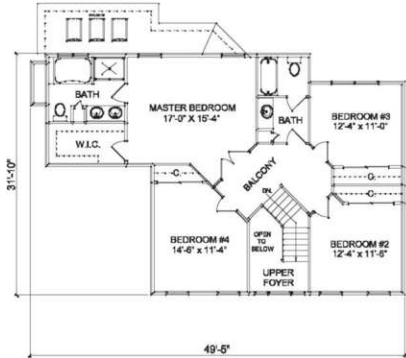


First Floor 1349 Sq. Ft.



## The Kensington

2470 Square Feet



Second Floor  
1121 Sq. Ft.

## Sidebottom

2396 Square Feet



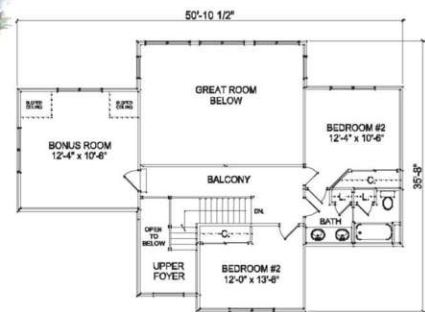
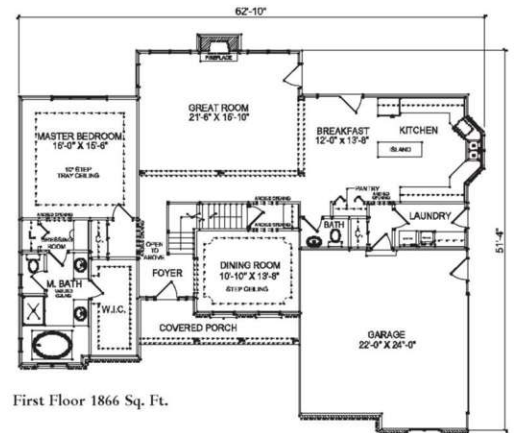
First Floor 1065 Sq. Ft.



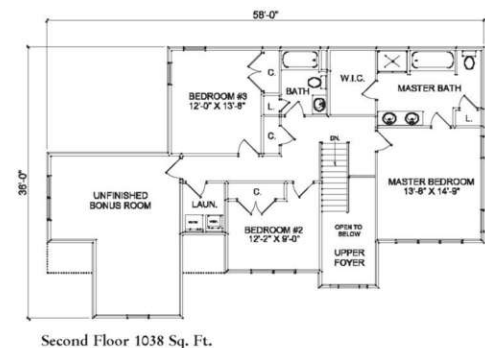
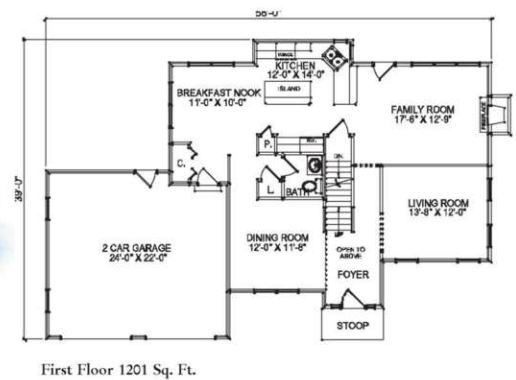
Second Floor 1331 Sq. Ft.



**The Genevieve**  
2716 Square Feet



**Lynchburg**  
2239 Square Feet





**Normandy**  
2571 Square Feet



First Floor 1460 Sq. Ft.



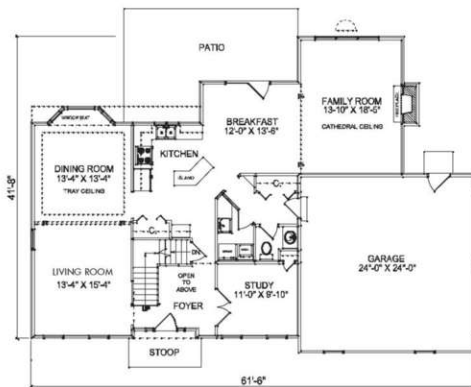
Second Floor 1111 Sq. Ft.



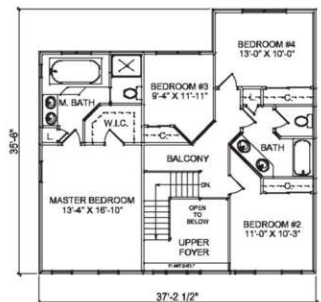
**Sidney**  
2603 Square Feet

#### CONSTRUCTION TERMINOLOGY

**Building Codes** ■ Regulations established by local government that specify the structural requirements of a building.



First Floor 1463 Sq. Ft.

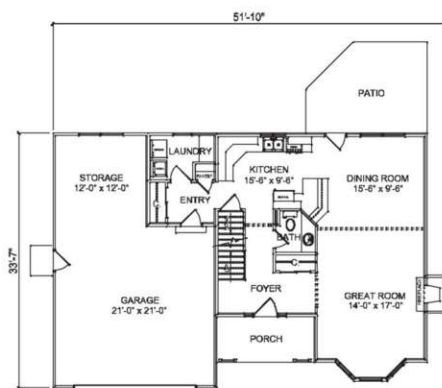
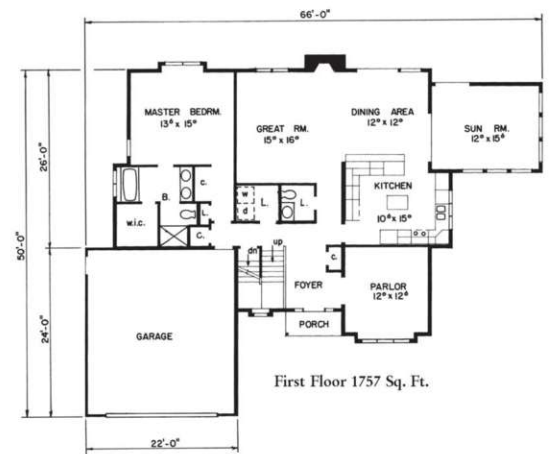


Second Floor 1140 Sq. Ft.

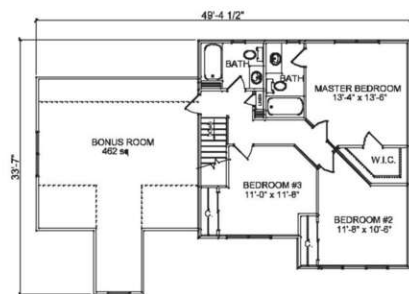
## TWO-STORIES



**Danbury**  
2658 Square Feet



**Dillon**  
1763 Square Feet

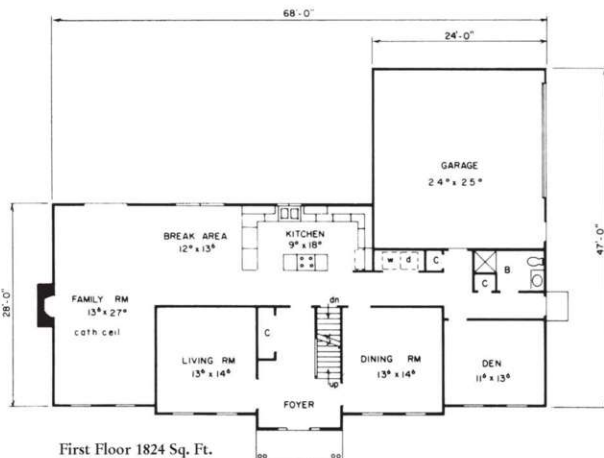




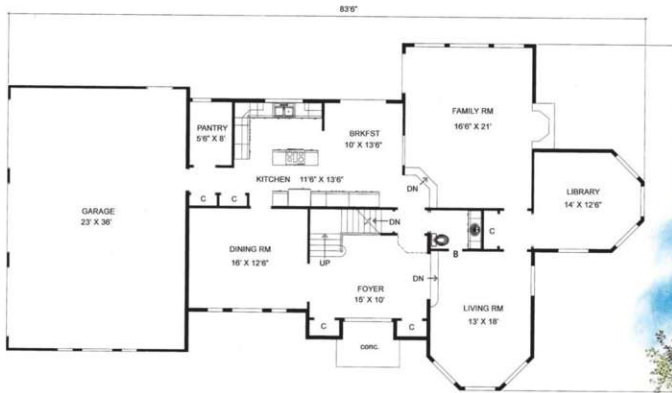
**Harrington Heights**  
2916 Square Feet



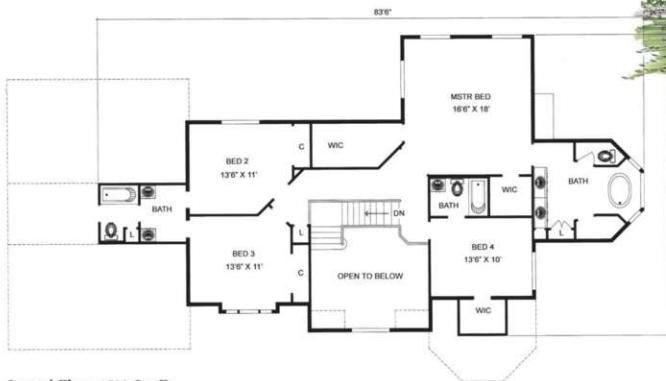
**Arlington**  
2924 Square Feet



## TWO-STORIES



First Floor 1690 Sq. Ft.



Second Floor 1599 Sq. Ft.

## New Castle

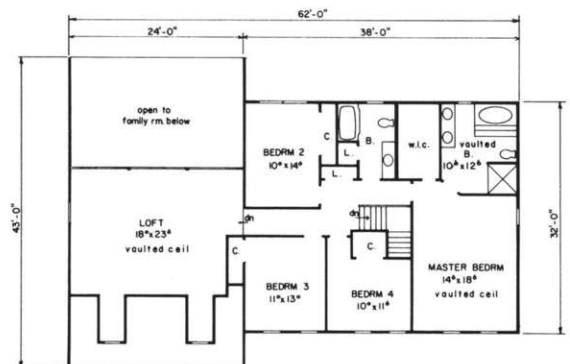
3289 Square Feet



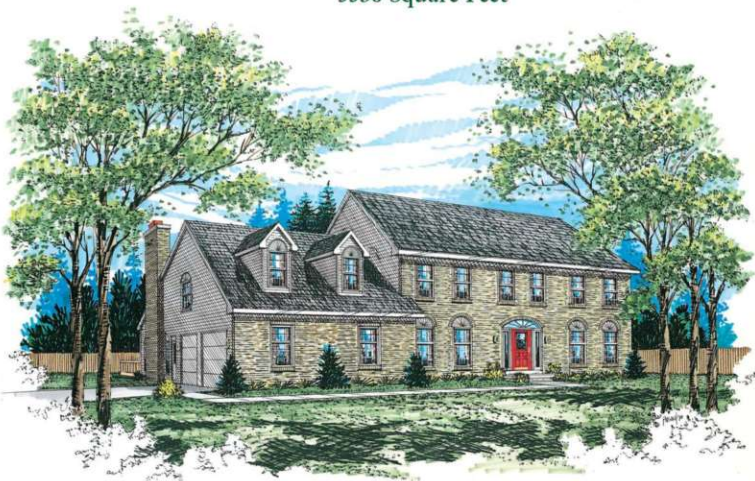
First Floor 1656 Sq. Ft.

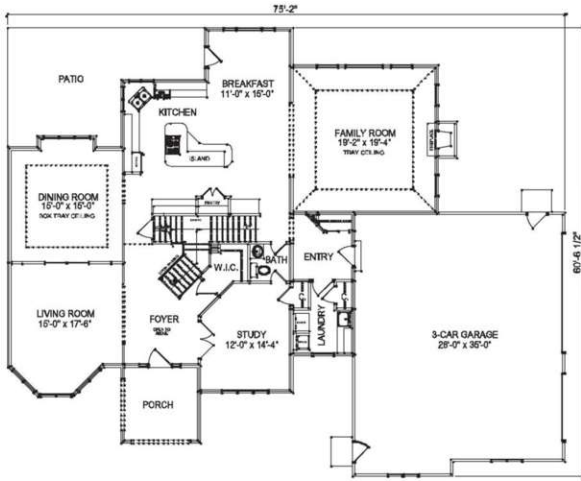
## Nottingham

3356 Square Feet



Second Floor 1700 Sq. Ft.





First Floor 2126 Sq. Ft.



**Lexington**  
3468 Square Feet



Second Floor  
1342 Sq. Ft.

**Swartwood Manor**  
3417 Square Feet



First Floor 1773 Sq. Ft.



Second Floor 1644 Sq. Ft.

## Woodland Villa

2007 Square Feet per unit

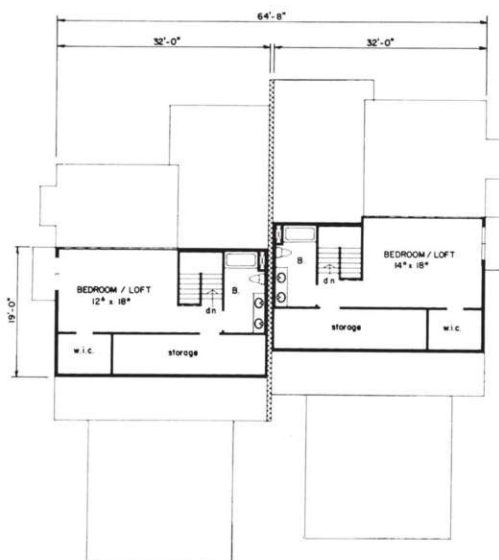


*We purchased a Barden home for several reasons — a large choice of home styles and an almost unlimited selection of materials from siding to roofing. Also we were impressed with the quality of materials used in the construction — which ultimately provided a sound house. The savings realized by being my own contractor gave us the ability to maintain costs within our budget. With the experienced staff available, my wife was able to easily incorporate her ideas into the design. After the construction was completed, our daughter and her husband fell in love with our new Barden Home and decided to build their own "Dream Barden Home." We are truly satisfied with our new homes and sure you will fall in love with yours also.*

TOM AND REGINA ARMOND



First Floor 1351 Sq. Ft.



Second Floor 656 Sq. Ft.

Barden Commercial, one of the largest manufacturers and suppliers of commercial buildings in the country today, has earned its reputation for providing building excellence featuring quality materials and service for over 50 years. Using our design-build approach and precision designed system, substantial savings of time and money are realized.

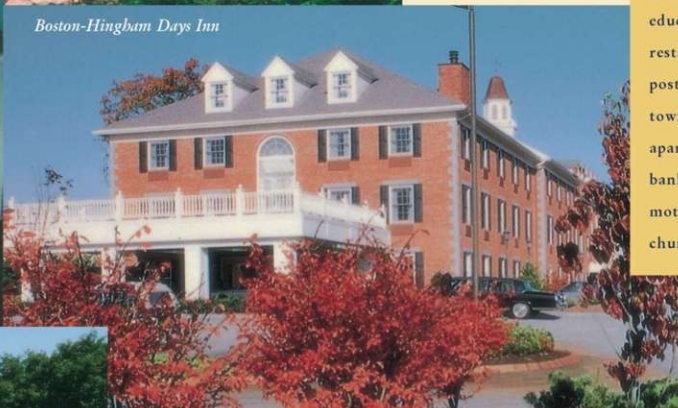
professional offices  
healthcare facilities  
educational centers  
restaurants  
post offices  
townhouses  
apartments  
banks  
motels and hotels  
churches



*Itasca Medical Center*



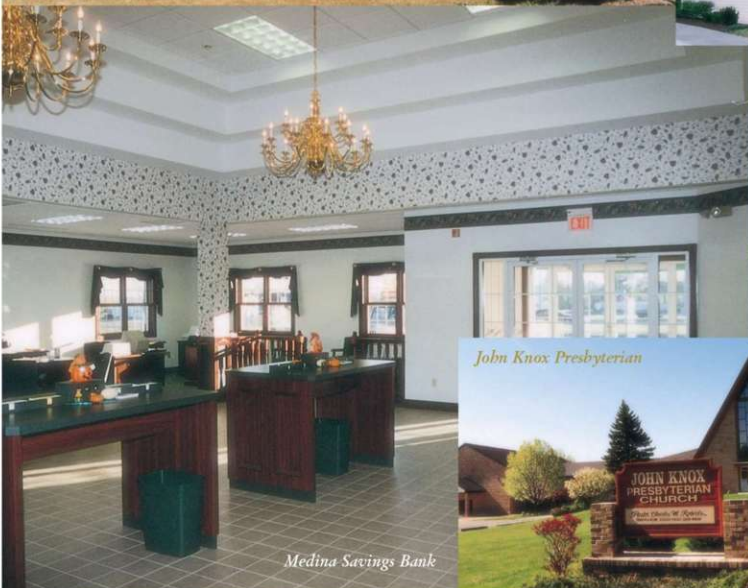
*Boston-Hingham Days Inn*



*Monacelli Dental Office*



*Wright's Corners Animal Care Center*



*Medina Savings Bank*



*Marine Midland Bank*



*John Knox Presbyterian*

**Barden Homes** provides your material selections from nationally recognized companies for **the very best** material for your home. We would like to dedicate this section to our **national suppliers** for their continued support and representation so faithfully throughout the years.

The world's  
**favorite lock.**

Available in a **variety**  
of **distinctive finishes.**

**Yale**

**YH** **design**  
Better. **Best.**  
ANSI Grade 2. Solid Brass.

[www.yalelock.com](http://www.yalelock.com)

**IDEAL**  
stair parts

Manufacturer & distributor of high quality stair parts  
[www.idealstairparts.com](http://www.idealstairparts.com)

**Build in Some Quality Time**

*If you love classic beauty but you'd rather be doing things other than maintenance . . .*

Choose Alside premium vinyl siding and exterior products for your new home. Premium vinyl cleans easily, never needs painting, and is made to last for years to come.

Visit our website at [www.alside.com](http://www.alside.com) to learn more about our virtually maintenance-free premium vinyl siding and window products.

**Alside**  
First On America's Homes

**HomeCrest**  
CABINETRY

**One Company.  
One focus.**

Providing quality products,  
outstanding service, innovative  
ideas, competitive prices and  
superior value.

**MOULDING & MILLWORK**

**Nature's Finest Siding.**

**CEDAR VALLEY**  
Handcrafted Shingle Panels  
[www.cedar-valley.com](http://www.cedar-valley.com) • (800) 521-9523

**SIMONTON**  
WINDOWS

Simonton windows and patio doors feature sturdy, fusion-welded profiles for remarkable strength and are made of premium vinyl that will never pit, peel or fade.

**MID-AMERICA**  
Siding Components

**Shutters & Window Headers**

**Standard Master Shutter™**

- Cathedral Open Louver or Williamsburg Raised Panel styles
- 2 standard widths and 14 standard lengths
- 16 colors plus a paintable option.

**Custom Shutters**

- Style-A-Louver™, Style-A-Panel™, or Board-N-Batten™ styles.
- Wide range of widths and lengths.
- 18 colors plus a paintable option.

**Window Headers**

- Flat Panel or Classic Dentil Profile.
- 8" or 12" height, in a width that fits virtually any window.
- 22 colors plus a paintable option.

**JELD-WEN**  
WINDOWS & DOORS

**RELIABILITY for real life™**

**Architectural Details That Create Lasting Impressions**

Imagine decor that not only beautifies but adds lasting value. Imagine products that will never need to be replaced. Imagine your home made better with Chemcrest's Moulded High Density Polyurethane Millwork. Set your imagination free.

**CHEMCREST**  
ARCHITECTURAL PRODUCTS

[www.chemcrest.com](http://www.chemcrest.com) 1 800 665 6653

*A Quality Home  
deserves Quality Windows.*

**MARVIN**   
Windows and Doors



Made for you.<sup>®</sup>  
[www.marvin.com](http://www.marvin.com)

**CHALLENGE NO. 3 INTEGRITY VS VINYL**

Vinyl is cheap - and it shows. Integrity<sup>®</sup> windows and doors that makes it virtually immune to discoloration, chalking and fading. Inside, gracefully milled pine interiors create a beauty that makes vinyl look like... vinyl. Built to perform.

VINYL: ☐ FLEXES ☐ FADES ☐ SCRATCHES ☒ LOOKS BAD


INTEGRITY: ☒ DOESN'T





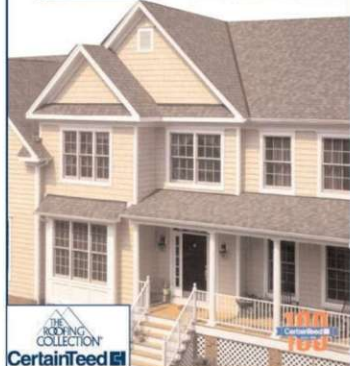
Test for yourself. Visit your local dealer today to see what Integrity windows and doors can do for you.

**Integrity**  
for Windows and Doors

**Teaming Up  
To Bring The Best To  
Barden Homes**

**BL**  **AND** **ERIE MATERIALS**  
THE ROOFING COLLECTION

**CertainTeed** 



**Renaissance Collection<sup>™</sup>**

Custom Steel Garage Doors


- The look of wood "carriage house" doors
- The long-lasting value of steel

Look for the Ribbon.  
Your guarantee of genuine quality and service

**The Genuine. The Original.**

**OVERHEAD DOOR**

1-800-929-DOOR  
[www.OverheadDoor.com](http://www.OverheadDoor.com)



**THERMA TRU<sup>®</sup> DOORS**





**The Most Preferred Brand in the Business<sup>™</sup>**

**THE STRONGEST WAY TO FASTEN WOOD!**

Simpson offers over 5,000 connectors for wood-to-wood or wood-to-concrete application. We also manufacture custom hangers to your specifications.

**Helping to build better buildings.**

**SIMPSON**  
**Strong-Tie**

800-999-5099  
[www.strongtie.com](http://www.strongtie.com)



OUR SIDING RESISTS  
ROTTING, WARPING  
AND SWELLING.  
BESIDES THAT, IT'S JUST  
LIKE WOOD.

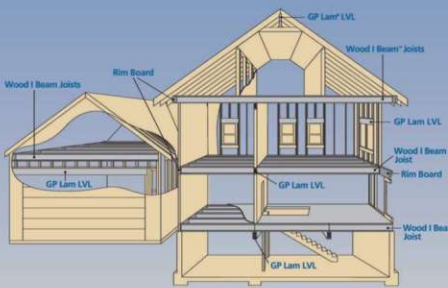
**James Hardie<sup>®</sup>**  
Siding Products  
1-866-4-HARDIE  
[www.jameshardie.com](http://www.jameshardie.com)



**Engineered for performance**

When it comes to floor joists, rimboard, beams and headers, builders and contractors choose GP engineered lumber for many reasons. Georgia-Pacific engineered lumber provides the following benefits:

- More open spaces
- Quieter floors with less vibration
- A flat, level, more stable floor system
- Environmentally responsible
- Lifetime limited warranty\*



**WOOD I BEAM** **GP LAM** **FiberStrong** **ENGINEERED LUMBER**

\*For terms, conditions and limitations please see manufacturer's warranty. For a copy of the manufacturer's warranty call 1-888-502-BLUE.

WOOD I BEAM and FIBERGUARD are trademarks and the ENGINEERED LUMBER logo, the WOOD I BEAM logo, FIBERSTRONG and GP LAM are registered trademarks of Georgia-Pacific Corporation. GEORGIA-PACIFIC, GP and the GP symbol are trademarks of Georgia-Pacific Corporation. BLUELINX and the BlueLINX DESIGN are trademarks of BlueLINX Corporation.  
©2005 Georgia-Pacific Corporation. All rights reserved. Printed in the U.S.A.

Distributed Exclusively by  
**BlueLINX**

For more information,  
call 1-888-853-2256  
or visit [www.bluex2co.com](http://www.bluex2co.com).

## *Barden Homes Specifications*

### FLOOR DECK FRAMING

- Styrofoam sill seal 5-1/2".
- 2x6 Pressure treated wall plate.
- Built-up laminated veneer lumber girder, as required.
- Floor joists, as required.
- 3/4" T&G (Tongue & Groove) plywood sub-floor with sub-floor adhesive.
- 3" diameter round one-piece steel basement posts with adjustable threads.
- K.D. (knocked down) basement stairs; 2x10 treads and stringers, handrail and brackets.
- Cross bridging, wood 1x3.

### EXTERIOR WALLS, INTERIOR PARTITIONS

- Panel height: 8' 1 - 1/8".
- 2x6 studs, 16" O.C. (On Center) on exterior walls.
- 2x4 studs, 16" O.C. on garage walls.
- 2x4 studs, 16" O.C. on interior partitions.
- 2x6 studs, 16" O.C. on plumbing walls.
- 2x8 or 2x10 headers on bearing walls as necessary.
- Single bottom and double top plates.
- Corner and partition backers installed in panels.
- 7/16" OSB (Oriented Strand Board) sheathing on all exterior walls.
- House wrap, infiltration barrier will be included under siding.
- Siding is "wood grain" vinyl "double lap," in white or in colors, with options of fiber cement, cedar or many other available products.
- White vinyl "J" blocks, 8 per house included.
- Gable end framing, stud nailer for siding 16" O.C.

NOTE: Gable end sheathing 7/16" OSB. If plywood wall sheathing option is used, then the gable would also receive the same. If insulated wall sheathing option is used, i.e. 1" R-Max, gable sheathing is 7/16" OSB.

- 2x6 partition cap for sheetrock nailer on first floor partitions; 1-1/2" metal ceiling angle or clips for sheetrock backer on ranch partitions or second floor partitions.

### ROOF & CEILING FRAMING

- 2x6 top and bottom chord truss system designed for installation on 24" centers, employing a roof pitch, with rake and eave overhangs per standard design. Roof design will vary with print.
- 2x4 lateral bracing supplied to tie roof truss system correctly.
- Felt paper, snow and ice shield, pre-finished metal drip edge, aluminum flashing, shingles with 5" exposure and 30 year warranty.
- Standard roof colors: Moire Black, Weathered Wood, Burnt Sienna, Resawn Shake, Driftwood, Colonial Slate, Georgetown Gray, Cobblestone Gray, Hunter Green, and Heather Blend.
- Nail-over ridge vent with nail-on 6" or 12" ladders.
- 1/2" roof plywood with clips.

### EXTERIOR TRIM

- Aluminum fascia and vinyl soffit systems come in white or brown as standard colors. Colors to match siding are an additional option.
- Vinyl shutters per print. Colors: white, black, brown, gray, blue, green, or burgundy.

### EXTERIOR DOORS & WINDOWS

- Exterior doors assembled in primed frame with vinyl brickmould applied.
- Main entrance door, metal clad, foam insulated, 36" x 6'8" with thermal break threshold applied.
- Service door, metal clad, foam insulated, 32" x 6'8" with thermal break threshold applied, no glass in house to garage door.
- Window styles per print, high efficient glass with screens.
- Garage overhead doors are pre-finished metal, insulated with metal back and installed after rough opening is trimmed.
- The door is 9' x 7' or 16' x 7' in white, almond or brown. Garage door openers are included with each overhead door.

### INTERIOR TRIM

- Interior doors are 1-3/8" hollow core, primed, 6-panel colonist.
- All swing door units will have three hinges. Closet units are by-pass or bi-fold with jambs per plan.
- All units are pre-hung in finger joint clear pine veneer jambs.
- Clear, pine door and windows picture-frame casing. Casing is 2-1/4", baseboard is 3".
- Both are modern "ranch" design in white pine.
- Closet shelving is vinyl white wire with supports as necessary.
- Door stops, sash locks as necessary.
- Assembled stairs, closed treads for two-story, splits, etc. Yellow pine risers, stringers, and treads.
- Stair parts, i.e. newels, balusters, and handrails, where designated.
- Bright Brass bedroom and bath privacy locksets, closet passage locksets and exterior locksets.

### KITCHEN CABINETS, VANITIES & COUNTERTOPS

- Standard cabinets are Oak, Hickory, and Maple. They are available with square or arch tops, and multiple colors. Hardware selections available.
- Counter and vanity tops are custom square edge countertops.
- Vanities, same style as kitchen cabinets, included only where shown on plans.
- Other cabinet styles are available

### LABOR & PREFABRICATION

- All exterior wall panels assembled with sheathing applied.
- Interior partitions assembled.
- Floor joists pre-cut to correct lengths.
- All interior doors pre-hung in veneer jambs where possible.
- Material delivered to job site on prearranged schedule.
- Tractor cranes available.

### MISCELLANEOUS NOTES

- The outside dimensions of all Barden Homes are from frame to frame.
- Floor plan dimensions do not include exterior wall sheathing that extends beyond the foundation.

### LOWER LEVELS OF ALL SPLIT LEVELS AND RAISED RANCHES

- Unfinished Lower Level: Furring panels for the lower level will be supplied as an optional extra.
- Finished Lower Level: 2 x 4 furring panels will be supplied with studs 16" O.C. with single top and bottom plate, except garage area.

# Index of Homes

Home	Sq. Ft.	Page
<b>Ranches</b>		
Patriot A	956	4
Patriot B	720	4
Charleston	1039	4
Odessa	1131	5
Crystal	1196	5
Clayton	1304	6
Bel Aire	1356	6
Deerwood	1366	7
Athens	1428	7
Tiffany	1435	8
American Tradition	1460	8
Amberleigh	1606	9
Oakbrook	1927	9

## Raised Ranches & Split Levels

New Spirit	1258	10
Valley Forge	1340	10
Liberty	1452	11
Potomac	1677	11
Eagle	1735	12
Cumberland	1830	12

## Capes

Woodstock	1148	13
Yorktown I	1178	13
Yorktown II	1377	13
New Haven	1640	14
Neilson's Nest	2046	14

## Two-Stories

Vernon	1194	15
Vale	1196	15
Sterling	1218	16
Morehead	1380	16
Roxbury	1367	17
Wellington	1496	18
Newberry	1512	18
Rockford	1818	19
Princeton	1530	19
Heatherwood	1564	20
Homestead	1590	20
Saxton	1680	21
Brookfield	1696	21
Bridgeport	1686	22
Westbury	1788	22
Hampton	1814	23
Winterhaven	1834	23
Woodhaven	1899	24
Ostrander's Orchard	2039	24
Eastfield	1921	25
Autumnview	1975	25
Oxford	1986	26
Wedgewood	2015	26
Lindsay	2138	27
Wilshire	2038	27
Ethan Allen I	1872	28
Ethan Allen II	2240	28
Ethan Allen III	2008	29
Ethan Allen IV	2140	29
Paskell's Place	2347	30
Hartford	2265	30
Williamstown	2320	31
Brentwood	2383	31
Hughston's Hideaway	2391	32
Moreland	2398	32
The Kensington	2470	33
Sidebottom	2396	33
The Genevieve	2716	34
Lynchburg	2239	34
Normandy	2571	35
Sidney	2603	35
Danbury	2658	36
Dillon	1763	36
Harrington Heights	2916	37
Arlington	2924	37
New Castle	3289	38
Nottingham	3356	38
Lexington	3468	39
Swartwood Manor	3417	39

## Duplexes

Woodland Villa	2007	per unit	40
----------------	------	----------	----





**The Barden & Robeson Corporation**

PO Box 310  
Middleport, NY 14105  
(716) 735-3732  
Fax (716) 735-3752  
1-800-724-0141

PO Box 550  
Tully, NY 13159  
(315) 295-2800  
Fax (315) 295-2789  
1-800-945-9400

[www.bardenhomes.com](http://www.bardenhomes.com)