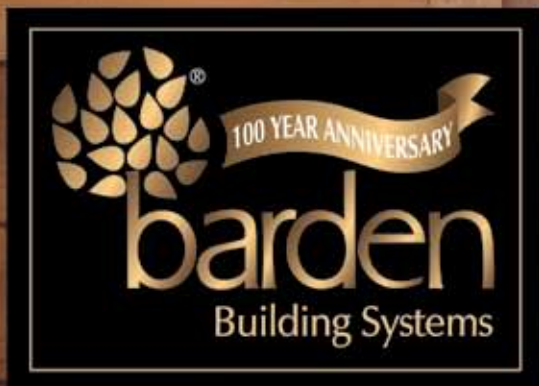


Family Tradition



Let's Celebrate

Cutting Edge Technology
& Green Products

Build The Best
With Barden

NEW!

**Barden Log Homes
Exciting Plans Inside!**



www.bardenhomes.com



Barden & Robeson Corp. is a material supplier under the registered trademarks of Barden Building Systems, Barden Homes, Barden Commercial, Barden Churches and Barden Log Systems.

Copyright 2009, The Barden Company. All rights reserved. No part of this catalog may be reproduced or transmitted by any means without the consent of The Barden & Robeson Corporation.

Images may not necessarily represent standard design, pricing or specifications.

UNLESS SPECIFICALLY IDENTIFIED IN YOUR MATERIAL CONTRACT, THE ITEMS SHOWN IN THE RENDERINGS ARE NOT INCLUDED IN THE BARDEN MATERIAL CONTRACT. PLEASE CONSULT WITH YOUR LOCAL INDEPENDENT DEALER AND OUR STANDARD SPECIFICATIONS FOR ITEMS INCLUDED FOR EACH MODEL.

BARDEN STANDARD SPECIFICATIONS CAN BE FOUND ON OUR WEBSITE AND SPECIFICATION PAGES IN OUR CATALOGS. STANDARD SPECIFICATIONS MAY CHANGE WITHOUT NOTICE.

Barden Family Tradition

100 Years of Excellence 3

The Barden Process 4

Ranches 6

Capes 17

Split Levels 20

Two Stories 23

Barden Log Systems 39

Multi-Family 43

Suppliers 45





Barden History

In 1909, George L. Barden teamed up with Roscoe J. Robeson in Penn Yan, New York, nestled in the heart of the Finger Lakes region, to form a lucrative partnership. Little did they know, the Barden and Robeson Corporation, which started with production of spokes and hubs for wagon wheels, would become a premier corporation that would continue to flourish for generations to come.

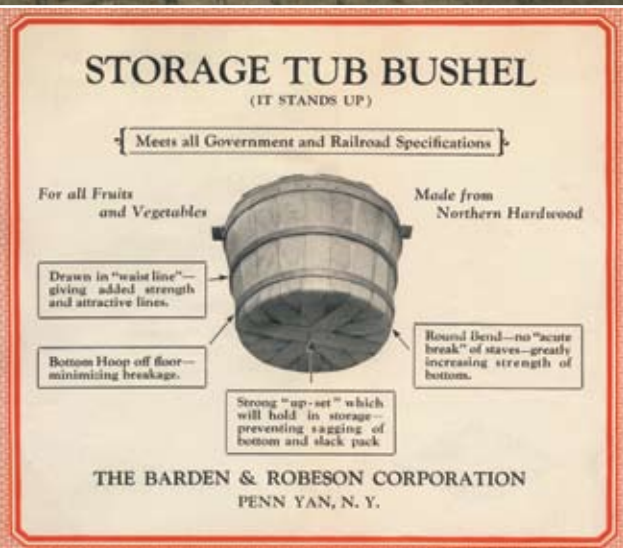


In 1911, to accommodate the rapidly growing fruit trade in the Finger Lakes region, the Barden and Robeson Corporation began producing bushel baskets. Business continued to grow, and by the 1920's wicker baby furniture was added to the company's product line. World War II shifted Barden and Robeson's focus to assisting the U.S. government by assembling ammunition boxes.

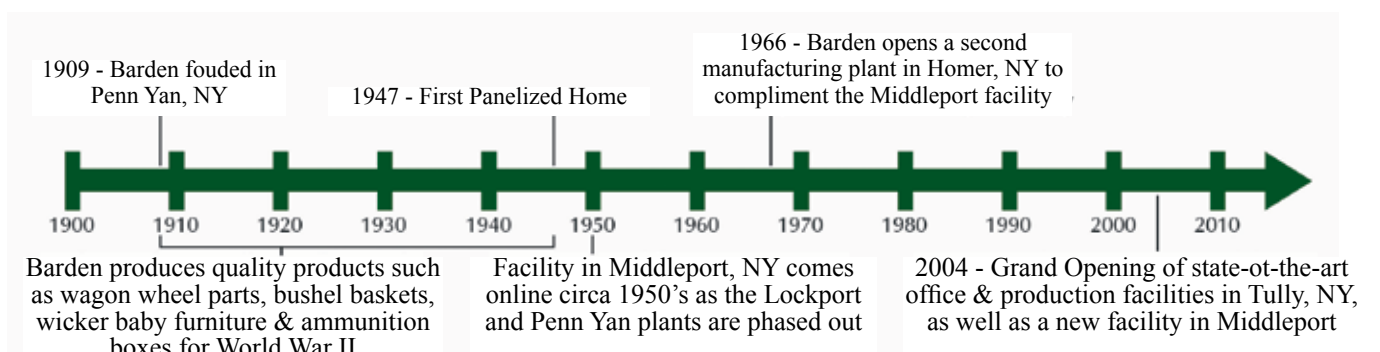
With the advent of peace Barden was left with a surplus of lumber from the ammunition boxes. At this same time, the U.S. government pushed for rapid housing, and so began Barden Homes. Bushel baskets and baby furniture were still being produced in three facilities: Penn Yan, Middleport, and Lockport, NY.

Bushel basket and furniture production began a slow decline, while the demand for Barden Homes grew so quickly that in 1966, the company opened the doors to another production facility located in Homer, New York. By this time, three generations of Bardens, G.L. Barden and his son Bryce, and Bryce's sons Rick and Tom, together with long-time family friend Bob Gelder, were steering the company towards what it is today.

With the fourth generation leading the way, Barden Building Systems continues to grow at a steady pace. In 2001, Barden Homes celebrated delivery of its 15,000 home. Since then, Barden upgraded all of their state-of-art equipment, staying far ahead of the competition.



Today, Barden Building Systems maintains a network of over 200 independent dealers who provide top quality custom built homes to valued customers. In keeping with the ideals that were instilled by its founders, George L. Barden and Roscoe J. Robeson, Barden Homes continues the long line of quality, precision, and tradition. We look forward to working with you!



The Barden Process

1

Call Barden Building and Log Systems for your local Independent Dealer at 1-800-945-9400. Meet with your Independent Dealer to review your needs.



2

With your Independent Dealer, develop and approve your plans, as well as your Barden material package.



3

Construction of your material package takes place indoors at Barden Building Systems. Skilled technicians assemble the components with pride and care.



4

Delivery of your material package occurs over separately timed shipments. Your independently hired framers set the pre-cut joists and pre-assembled walls and trusses on site. Regardless of the season, your home quickly takes shape.



5

In a matter of days, your home is protected from weather and theft. The remaining stages of construction are handled by your local contractors or yourself. Shortly after the sheetrocking is complete, Barden sends the interior trim that is included in your material package.



6

Soon, your custom Barden home is ready for you and your family.



BARDEN BUILDING SYSTEMS STANDARD SPECIFICATIONS

FLOOR DECK FRAMING

Styrofoam sill seal 5-1/2”
2x6Pressure treated wall plate.
Built-up laminated veneer lumber girder, as required
Floor joints, as required
3/4” T&G (Tongue & Groove) OSB sub-floor with sub-floor adhesive.
3” diameter round one-piece steel basement posts with adjustable threads.
K.D. (knocked down) basement stairs; 2x10 threads, stringers and plywood risers,
handrail and brackets
Cross bridging, wood 1x3

EXTERIOR WALLS, INTERIOR PARTITIONS

Panel height: 8’ 1 – 1/8”
2x6 studs, 16” OC (on center) on exterior walls.
2x4, 16” OC on garage walls.
2x4 finger jointed studs, 16” OC on interior partitions.
2x6 finger jointed studs, 16” OC on plumbing walls.
2x8 or 2x10 headers on bearing walls as necessary.
Single bottom and double top plates.
Corner and partition backers installed in panels.
7/16” OSB (Oriented Strand Board) sheathing on all exterior walls
House wrap, infiltration barrier will be included under siding.
Siding is “wood grain” vinyl “double lap,” in white or in colors, with options of fiber cement, cedar or many other available products.
White vinyl “J” blocks, 8 per house included.
Gable end framing, stud nailer for siding 16” OC.
NOTE: Gable end sheathing 7/16” OSB. If plywood wall sheathing option is used, then the gable would also receive the same.
2x6 partition cap for sheetrock nailer on first floor partitions; 1-1/2” metal ceiling angle or clips for sheetrock backer on ranch partitions or second floor partitions.

ROOF & CEILING FRAMING

Truss system designed for installation on 24” centers, employing a roof pitch, with rake and eave overhangs per standard design. Roof design will vary with print
2x4 lateral bracing supplied to tie roof truss system correctly.
Felt paper, snow and ice shield, pre-finished metal drip edge aluminum flashing, Certainteed Landmark shingles with 5” exposure and 30 year warranty.
Certainteed standard roof colors: Moire Black, Weathered Wood, Burnt Sienna, Resawn Shake, Driftwood, Colonial Slate, Georgetown Gray, Cobblestone Gray, Hunter Green, and Heather Blend.
Nail-over ridge vent with nail-on 6”or 12” ladders.
1/2” roof plywood with clips.

EXTERIOR TRIM

Aluminum fascia and vinyl soffit systems come in colors to match siding.
Vinyl shutters per print. Colors: white, black, brown, gray, blue, green, or burgundy.

EXTERIOR DOORS & WINDOWS

Exterior door assembled in primed frame with vinyl brick mould applied.
Main entrance door, fiber glass, foam insulated, 3/0 x 6/8 with thermal threshold applied. (smooth star)
Service door, fiber glass, foam insulated, 2/8 x 6/8 with thermal break threshold applied, no glass in house to garage door.
Window styles per print, smart R glass with screens.
Garage overhead doors are pre-finished metal, insulated with metal back and installed after rough opening is trimmed.
The door is 194 series 9/0 x 7/0 or 16/0 x 7/0 on white, almond, sandstone, hunter green, terra bronze or brown. Garage door openers are included with each overhead door.

INTERIOR TRIM

Interior doors are 1-3/8” hollow core, primed.
All swing door units with have three hinges. Closet units are by-pass or bi-fold with jambs per plan.
All units are pre-hung in primed jambs.
MDF door and windows picture-frame casing. Casing is 2-1/4” colonial style.
MDF baseboard is 3” colonial style.
Closet shelving is vinyl white wire with supports as necessary.
Door stops, sash locks as necessary.
Assembled stairs, closed treads for two-story, splits, etc. Yellow pine risers, stringer, and treads.
Stair parts, i.e. newels, balusters, and handrails, where designated.
Bright Brass bedroom and bath privacy locksets, closet passage locksets and exterior locksets.

KITCHEN CABINETS, VANITIES & COUNTERTOPS

Standard cabinets are Oak, Hickory, and maple. They are available with square and arch tops, and multiple colors. Hardware selections available.
Counter and vanity tops are custom or post form laminate countertops.
Vanities, same style as kitchen cabinets, include only where shown on plans
Other cabinet styles are available.

LABOR & PREFABRICATION

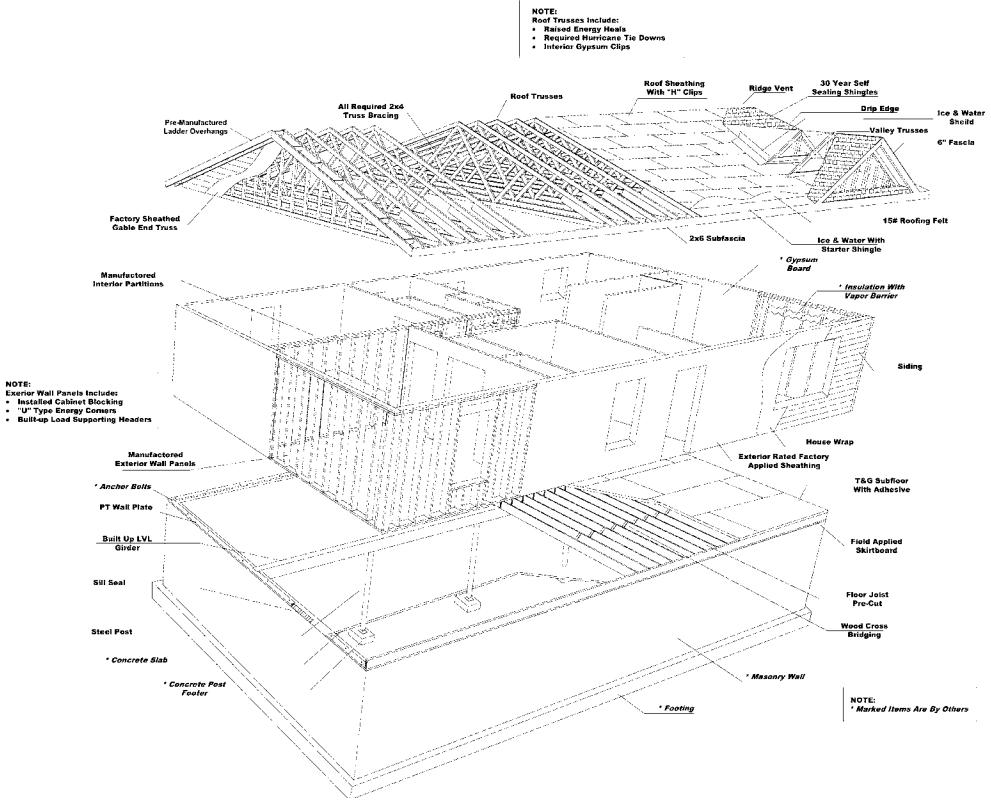
All exterior wall panels assembled with sheathing applied.
Interior partitions assembled.
Floor joists pre-cut to correct lengths
All interior doors pre-hung in jambs where possible.
Material delivered to job site on prearranged schedule.
Tractor cranes available.

MISCELLANEOUS NOTES

The outside dimensions of all Barden Homes are from frame to frame.
Floor plan dimensions do not include exterior wall sheathing that extends beyond the foundation.

LOWER LEVELS OF ALL SPLIT LEVELS AND RAISED RANCHES

Unfinished Lower Level: Furring panels for the lower level will be supplied as optional extra.
Finished Lower Level: 2x4- furring panels will be supplied with studs 16” OC with single top and bottom plate, except garage area.

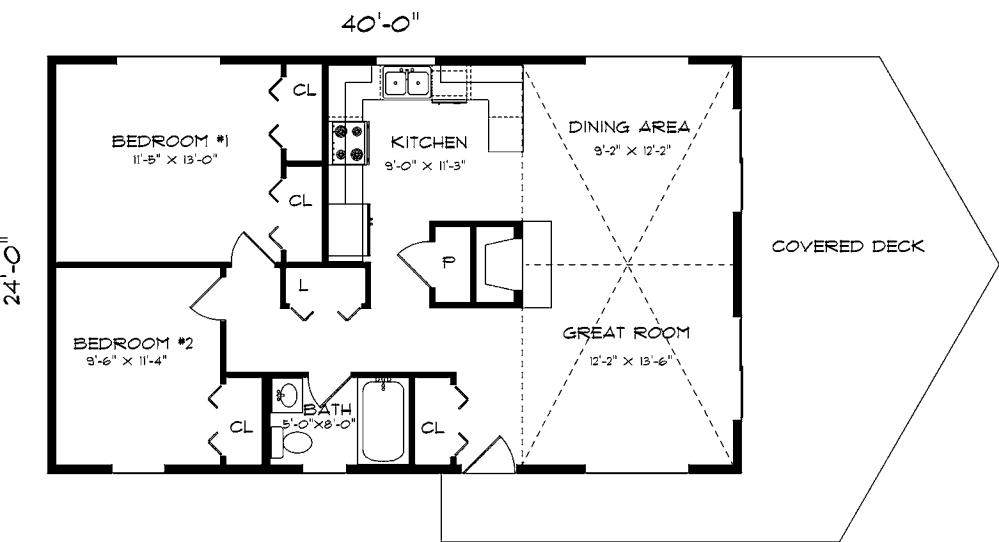
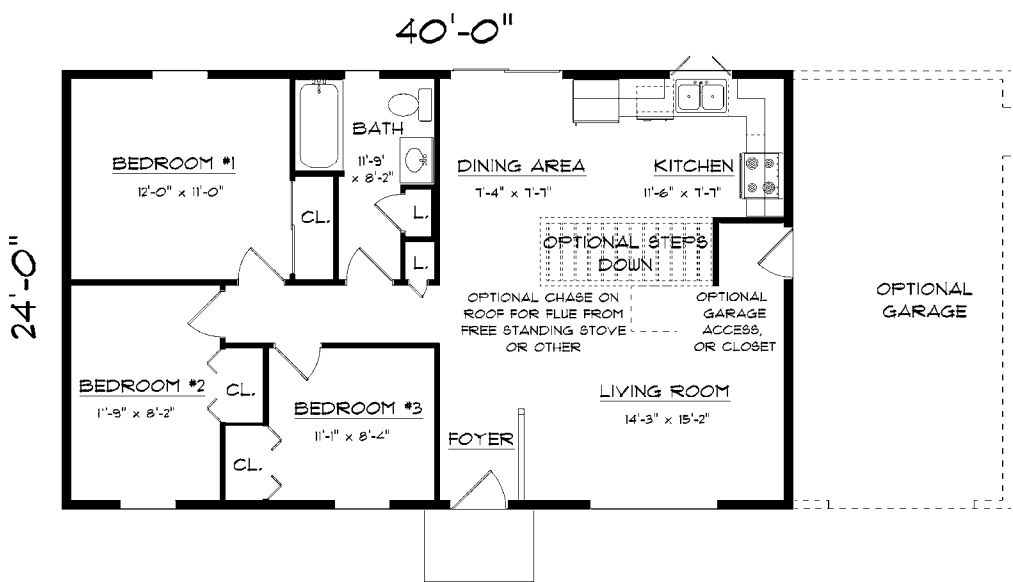




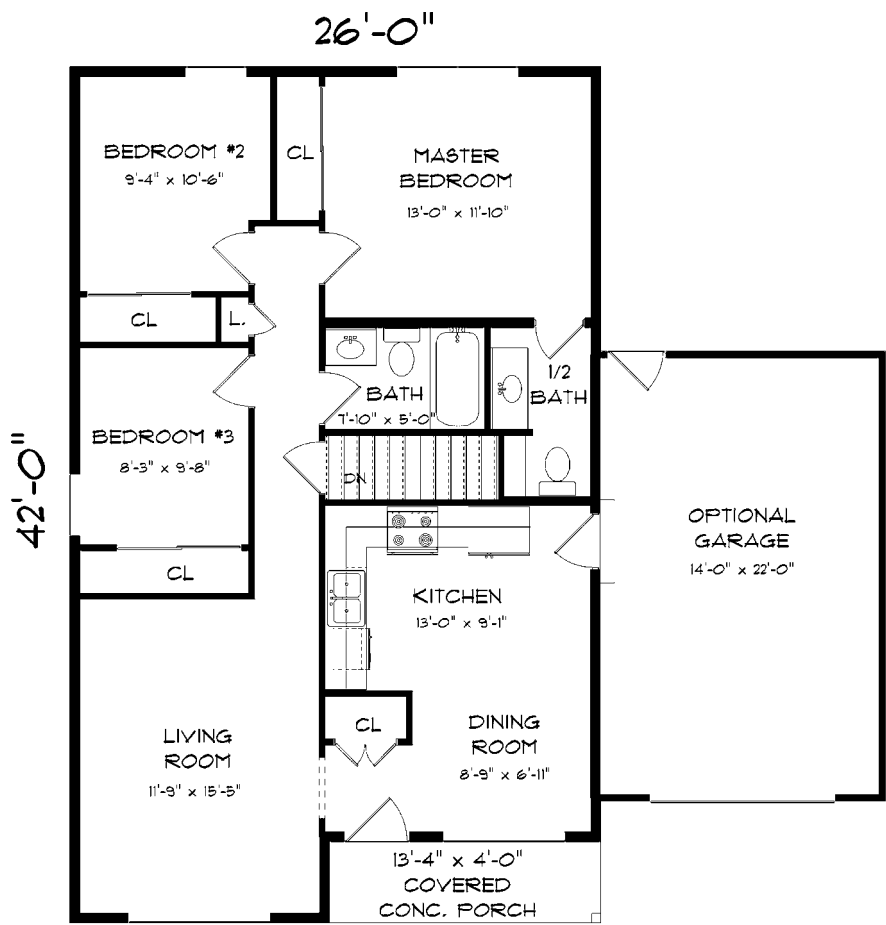
"I would like to take this opportunity to let you know what a great experience we had designing our home. We toured your factory in Homer and looked at several Barden Homes at various stages of completion in Cortland. The quality we were looking for was very apparent, and we decided to proceed with purchasing a Barden Home. The Barden Home quality is first rate and your design staff was very helpful. We are very pleased to give Barden Homes our highest recommendation. We are very satisfied customers!"



Patriot A 960 Sq. Ft.



Forestview 976 Sq. Ft.

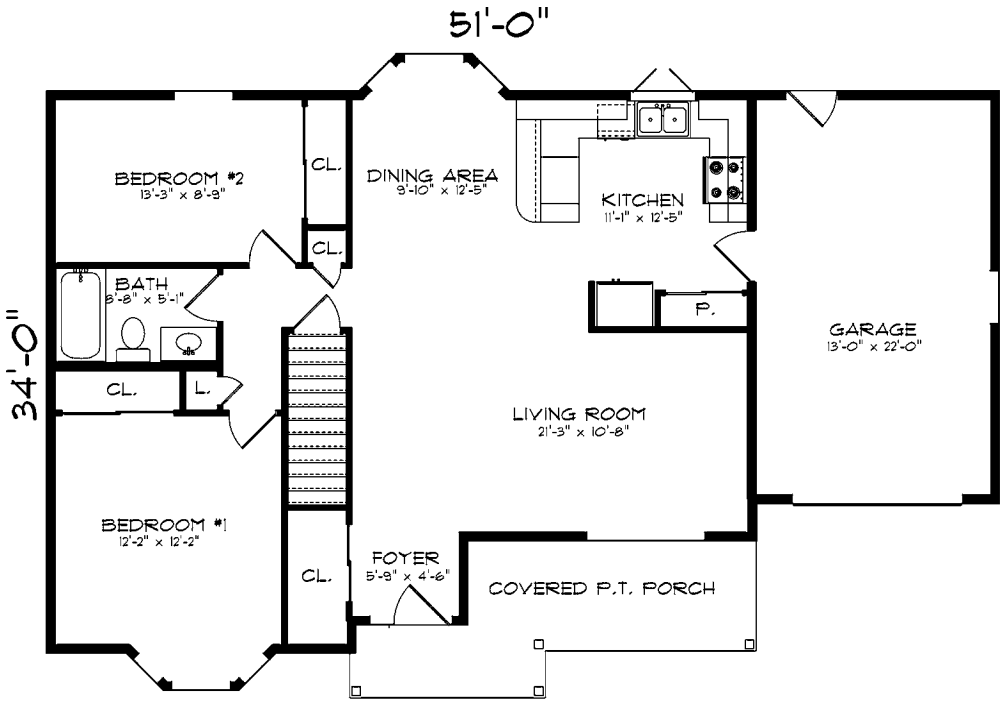


Charleston 1039 Sq. Ft.



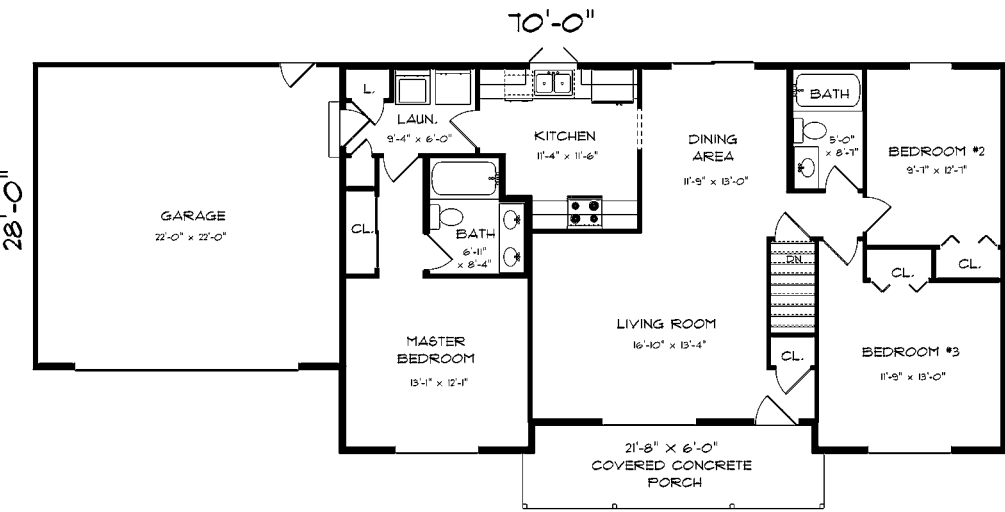
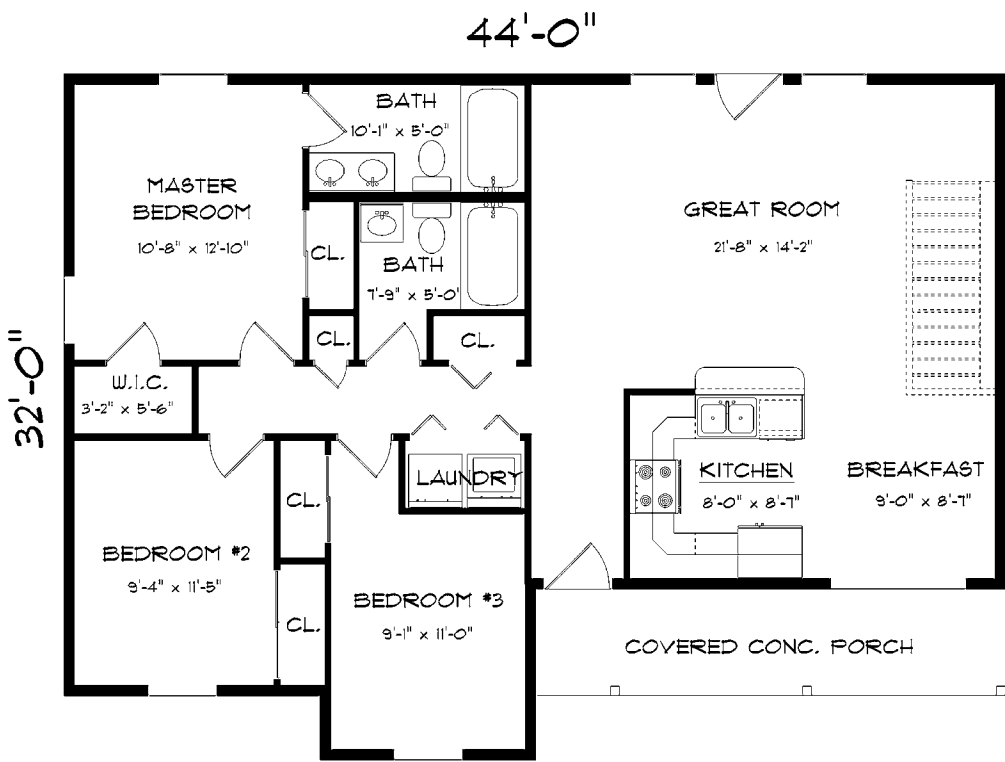
CULTURED STONE NOT INCLUDED IN STANDARD PACKAGE.

Cameo 1062 Sq. Ft.



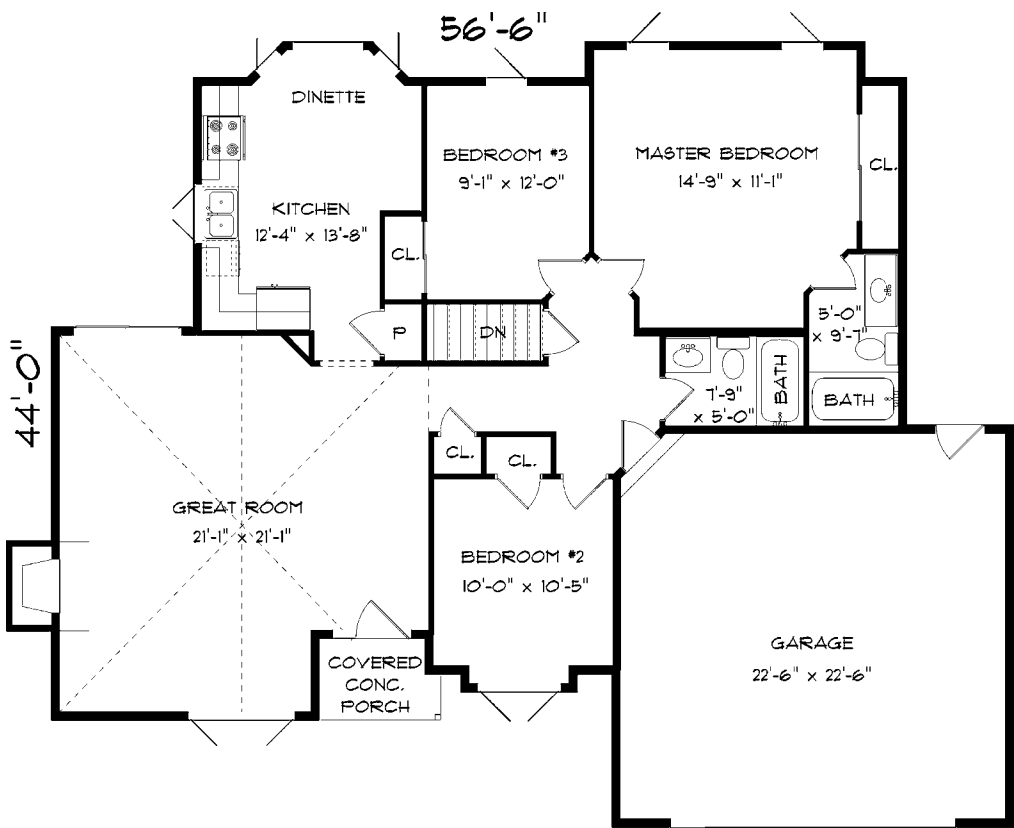


Crystal 1196 Sq. Ft.



GLASS PANELS IN OHD NOT INCLUDED IN STANDARD PACKAGE.

Clayton 1304 Sq. Ft.

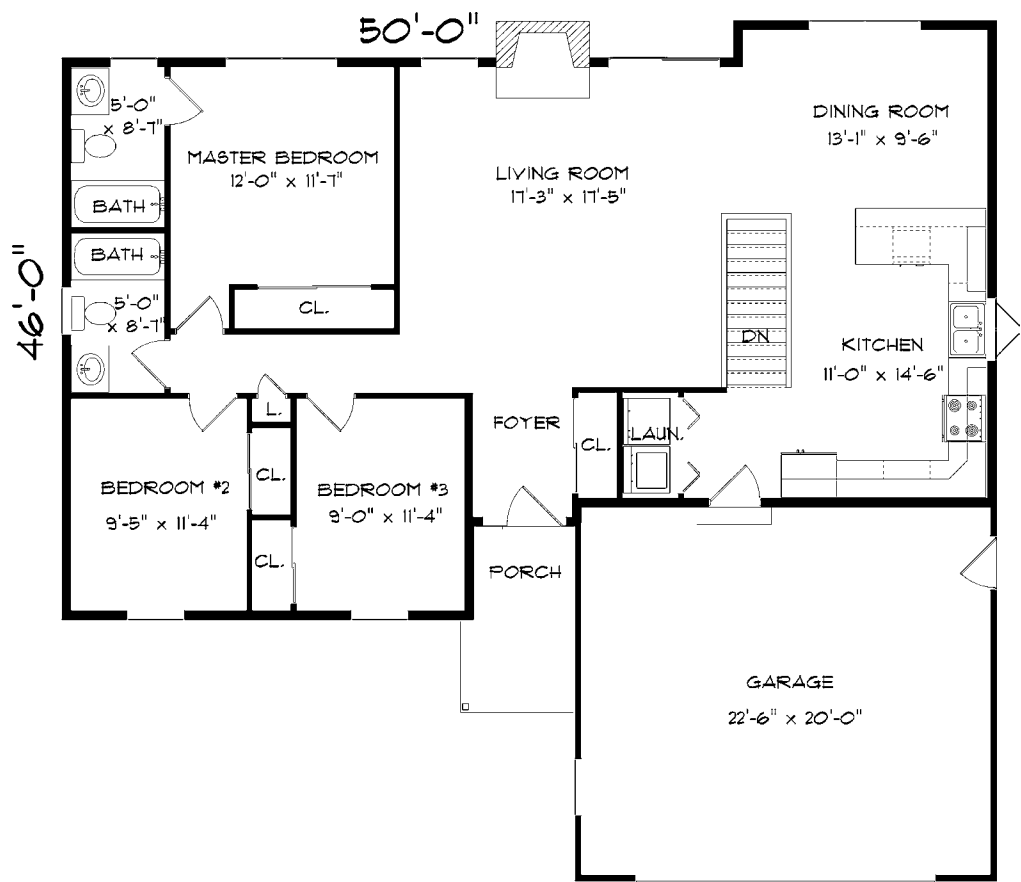


Bel Aire 1358 Sq. Ft.



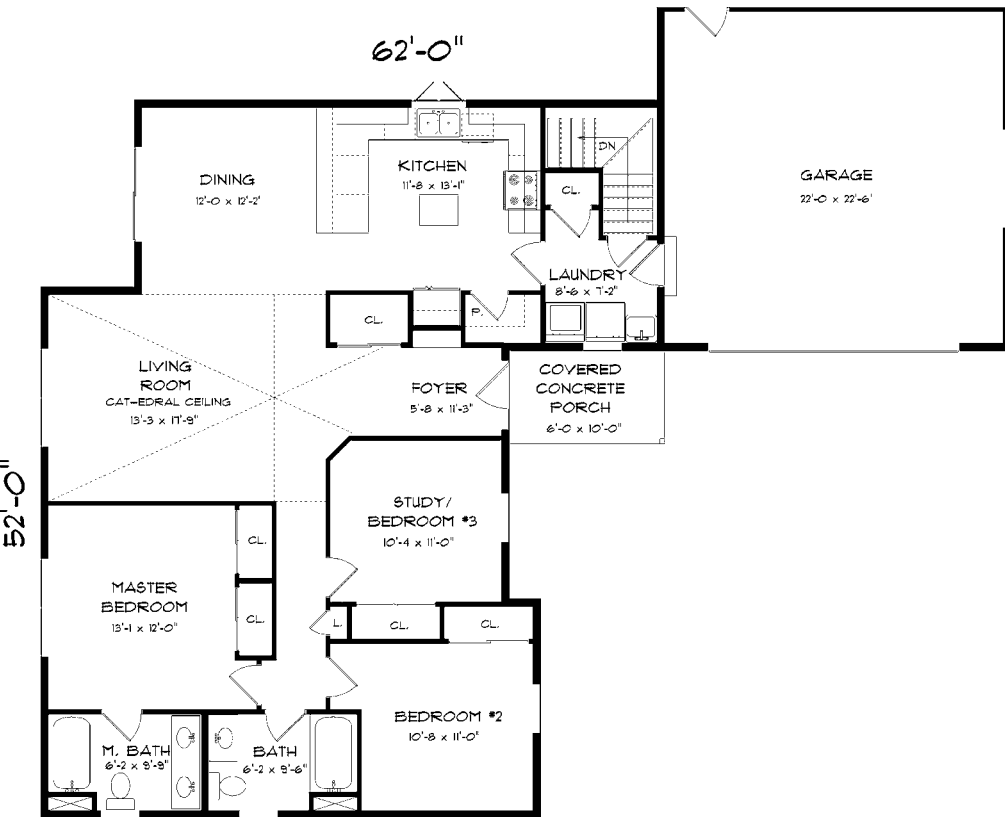
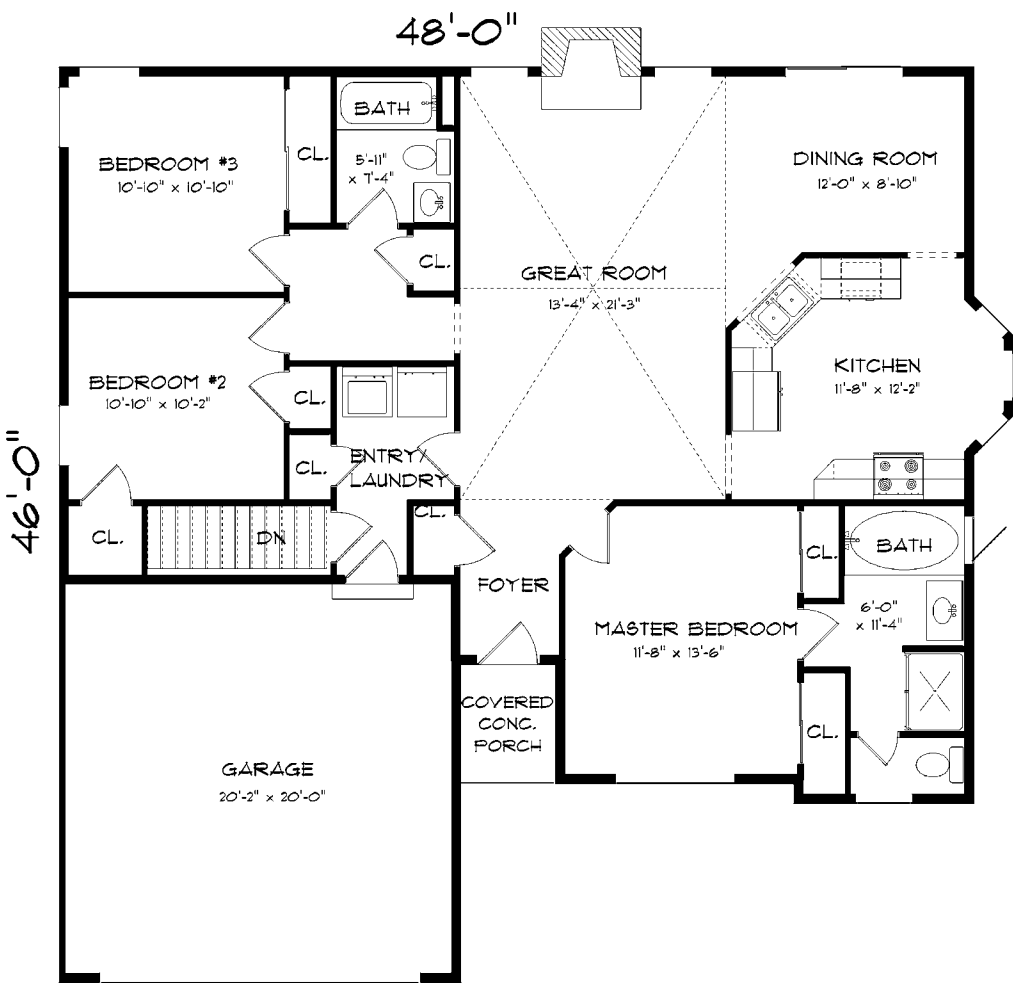
GLASS PANELS IN OHD NOT INCLUDED IN STANDARD PACKAGE.

Deerwood 1365 Sq. Ft.



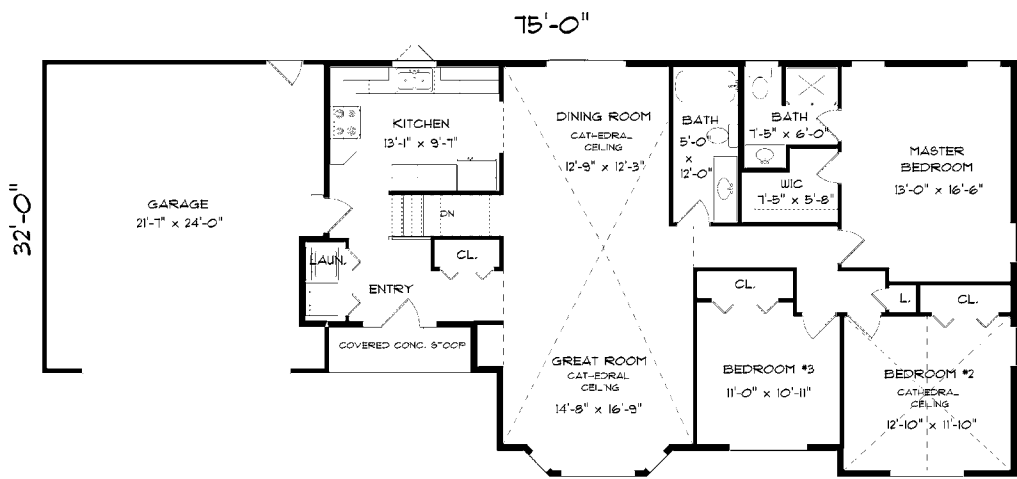


Tiffany 1448 Sq. Ft.



GLASS PANELS IN OHD NOT INCLUDED IN STANDARD PACKAGE.

Athens 1496 Sq. Ft.



GLASS PANELS IN OHD NOT INCLUDED IN STANDARD PACKAGE.

American Tradition

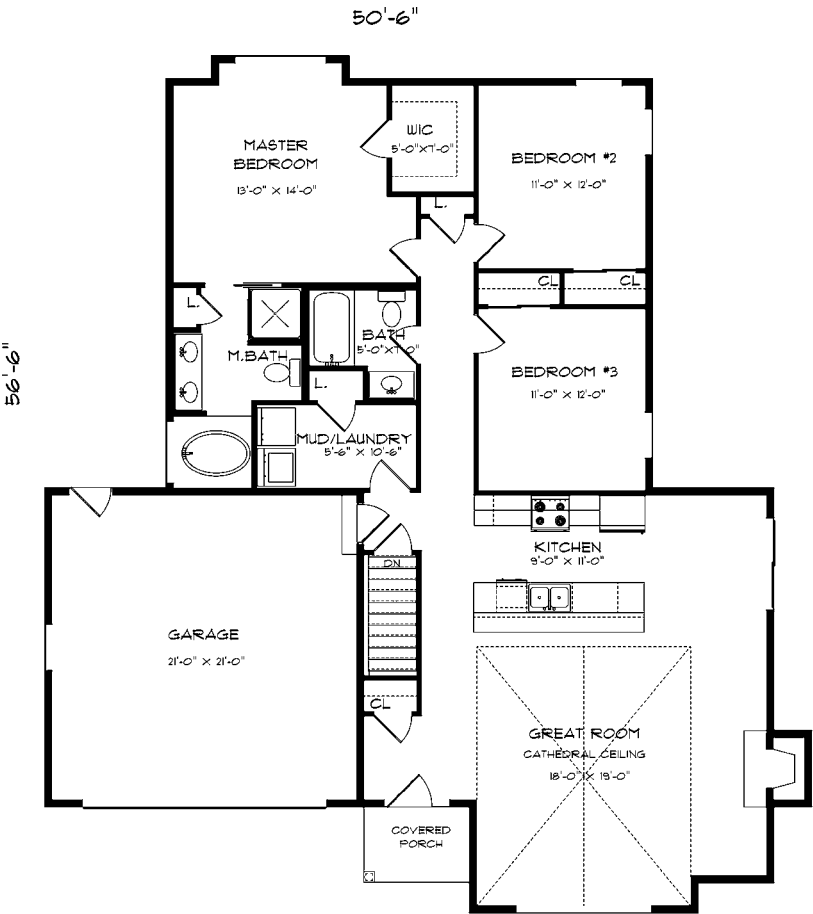
1540 Sq. Ft.



GLASS PANELS IN OHD NOT INCLUDED IN STANDARD PACKAGE.

Kingston

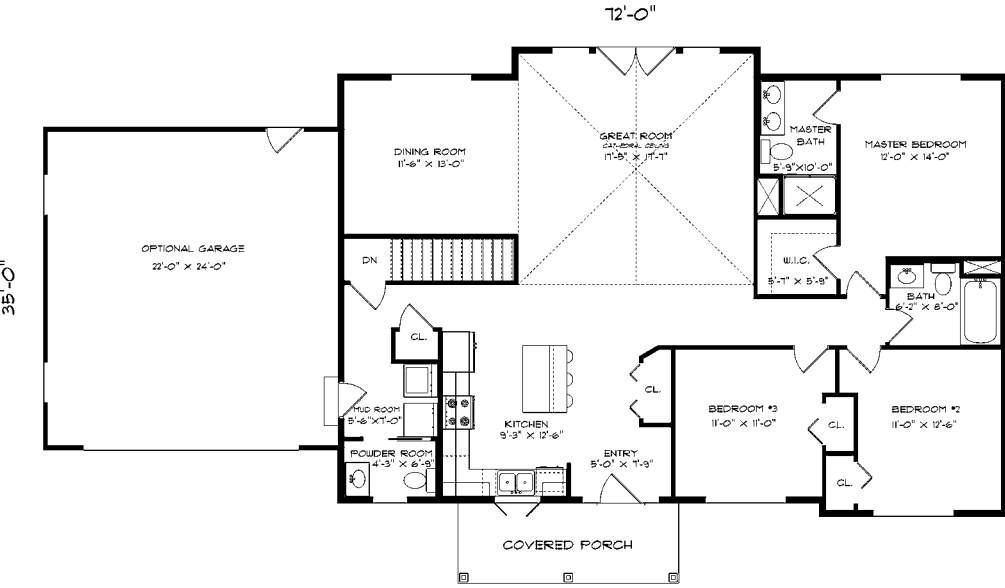
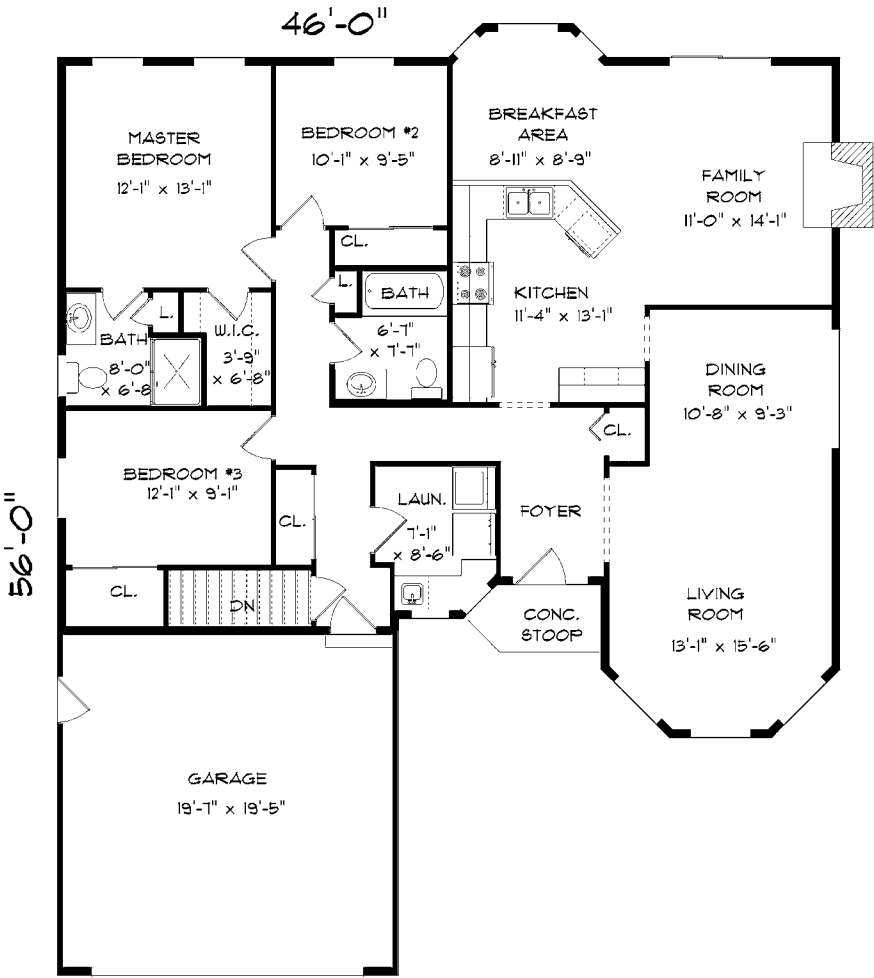
1580 Sq. Ft.





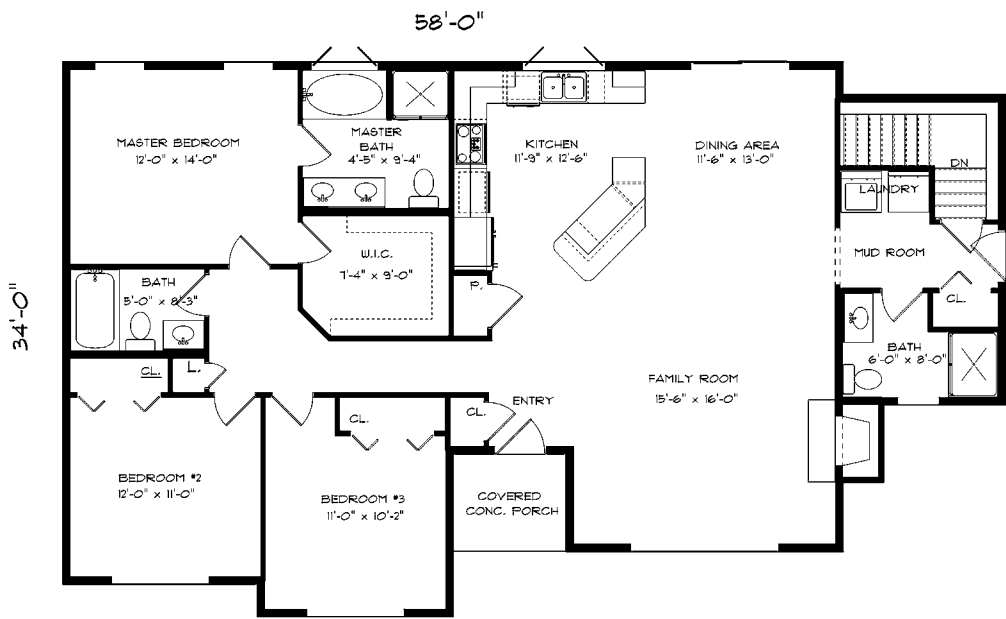
GLASS PANELS IN OHD NOT INCLUDED IN STANDARD PACKAGE.

Amberleigh 1620 Sq. Ft.



CULTURED STONE NOT INCLUDED IN STANDARD PACKAGE.

Chestnut 1651 Sq. Ft.



Aspen

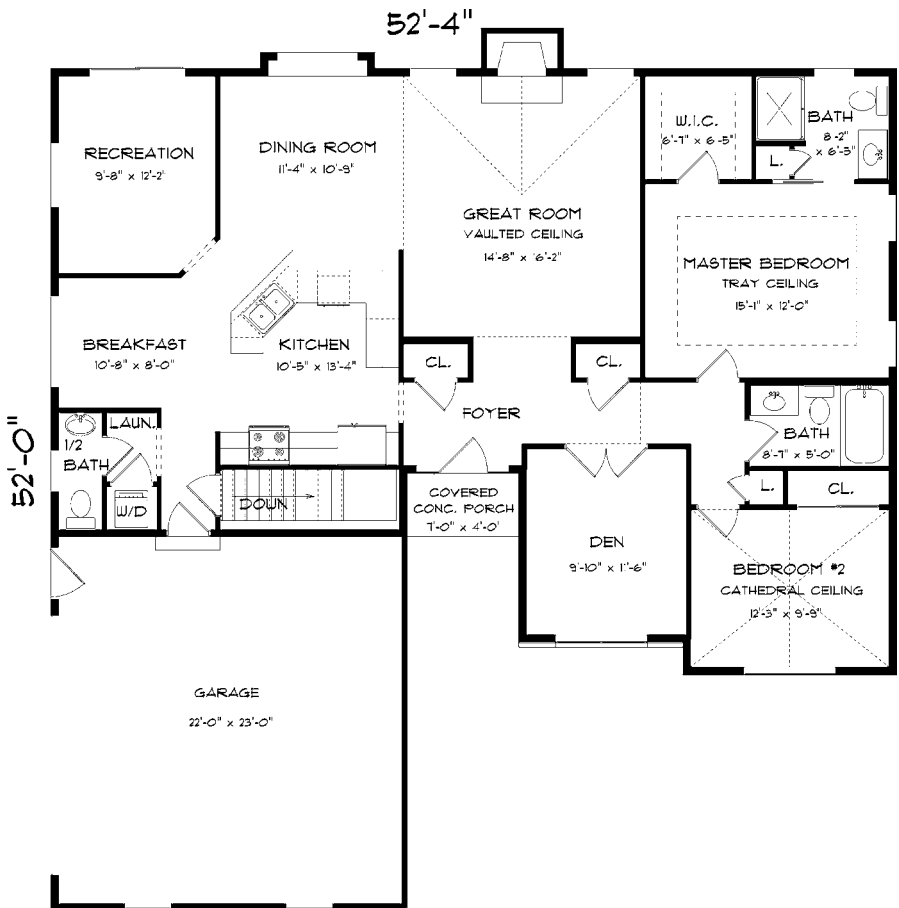
1656 Sq. Ft.



CULTURED STONE NOT INCLUDED IN STANDARD PACKAGE.

Vintage Court

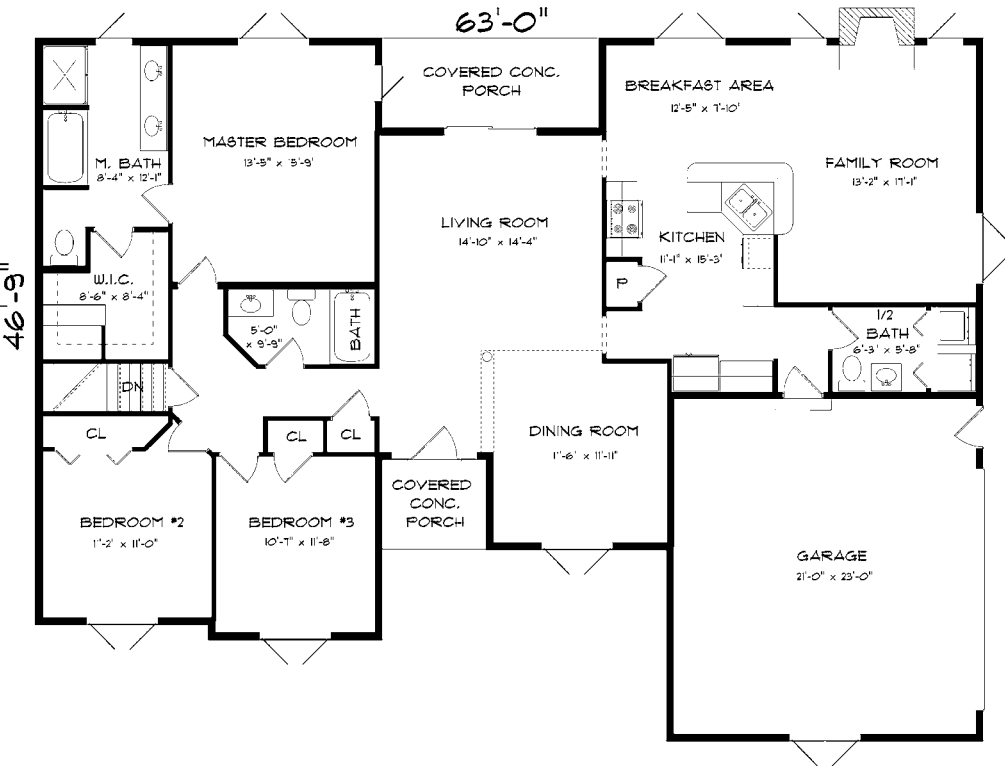
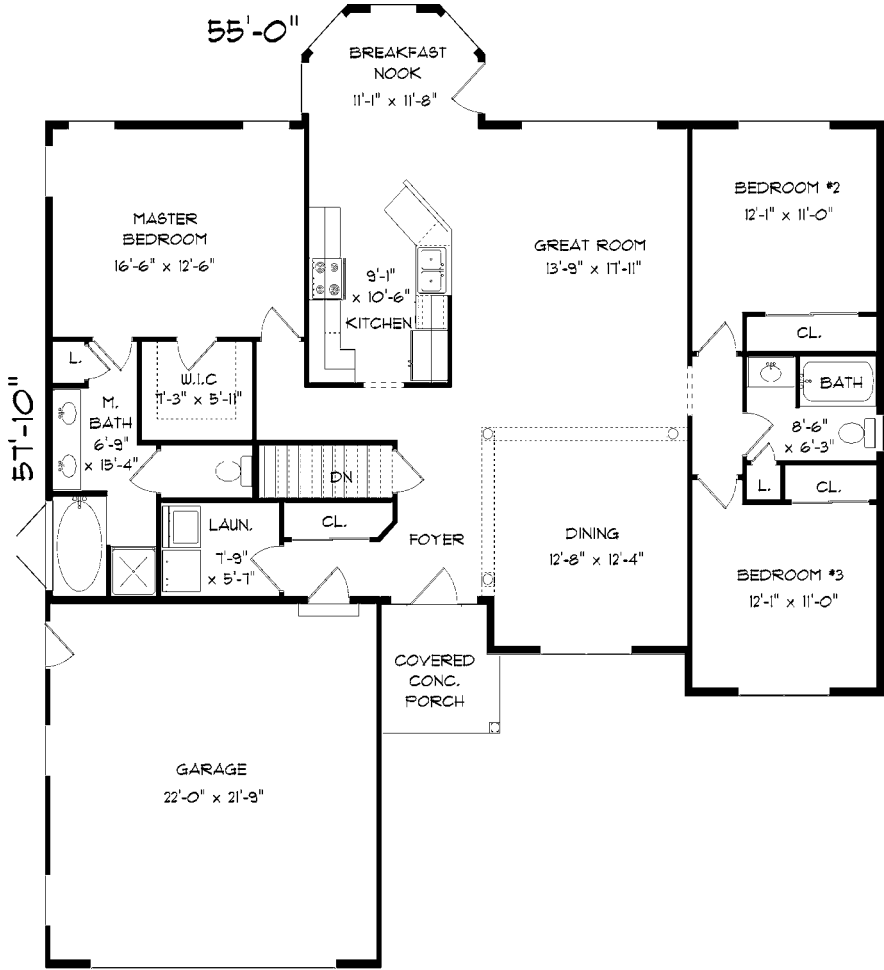
1675 Sq. Ft.



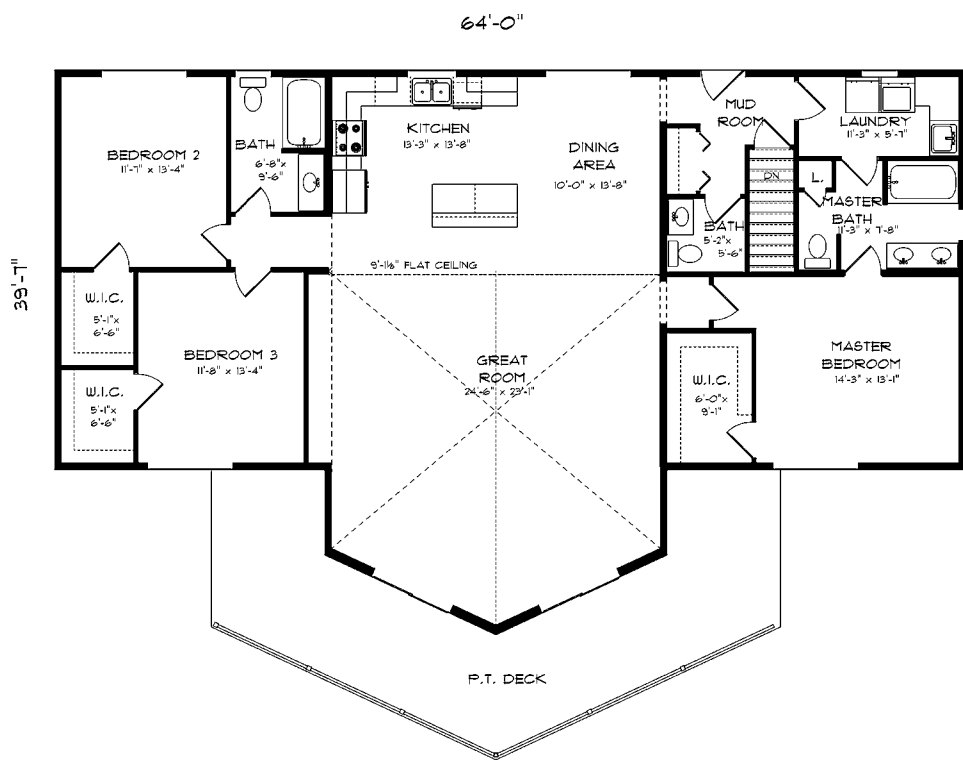


CULTURED STONE AND GLASS PANELS IN OHD ARE NOT INCLUDED IN STANDARD PACKAGE.

Edmonds Point 1781 Sq. Ft.



Oakbrook 1934 Sq. Ft.

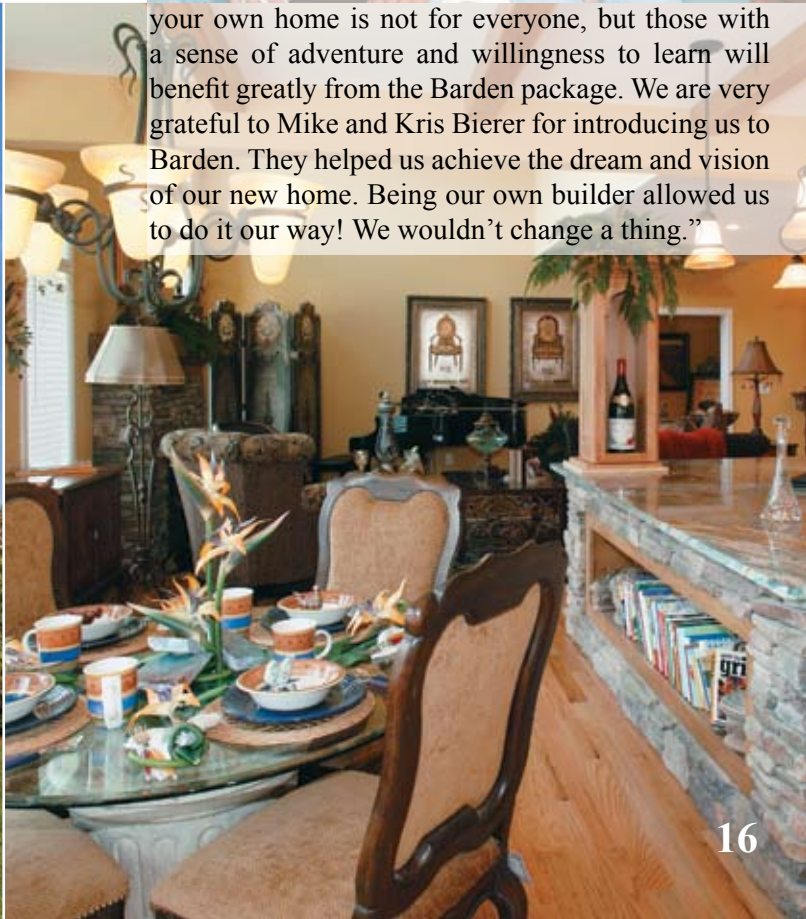


Pine Ridge

2003 Sq. Ft.



"We are now living in our second Barden home. Barden gave us the opportunity to build the home we really wanted at a price we could afford. Building your own home is not for everyone, but those with a sense of adventure and willingness to learn will benefit greatly from the Barden package. We are very grateful to Mike and Kris Bierer for introducing us to Barden. They helped us achieve the dream and vision of our new home. Being our own builder allowed us to do it our way! We wouldn't change a thing."

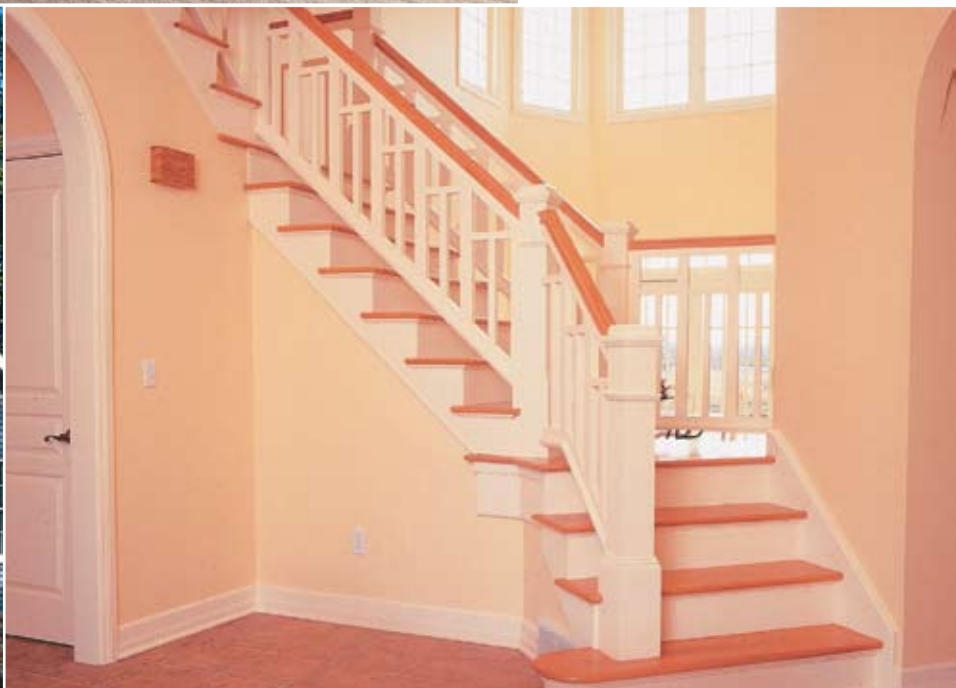


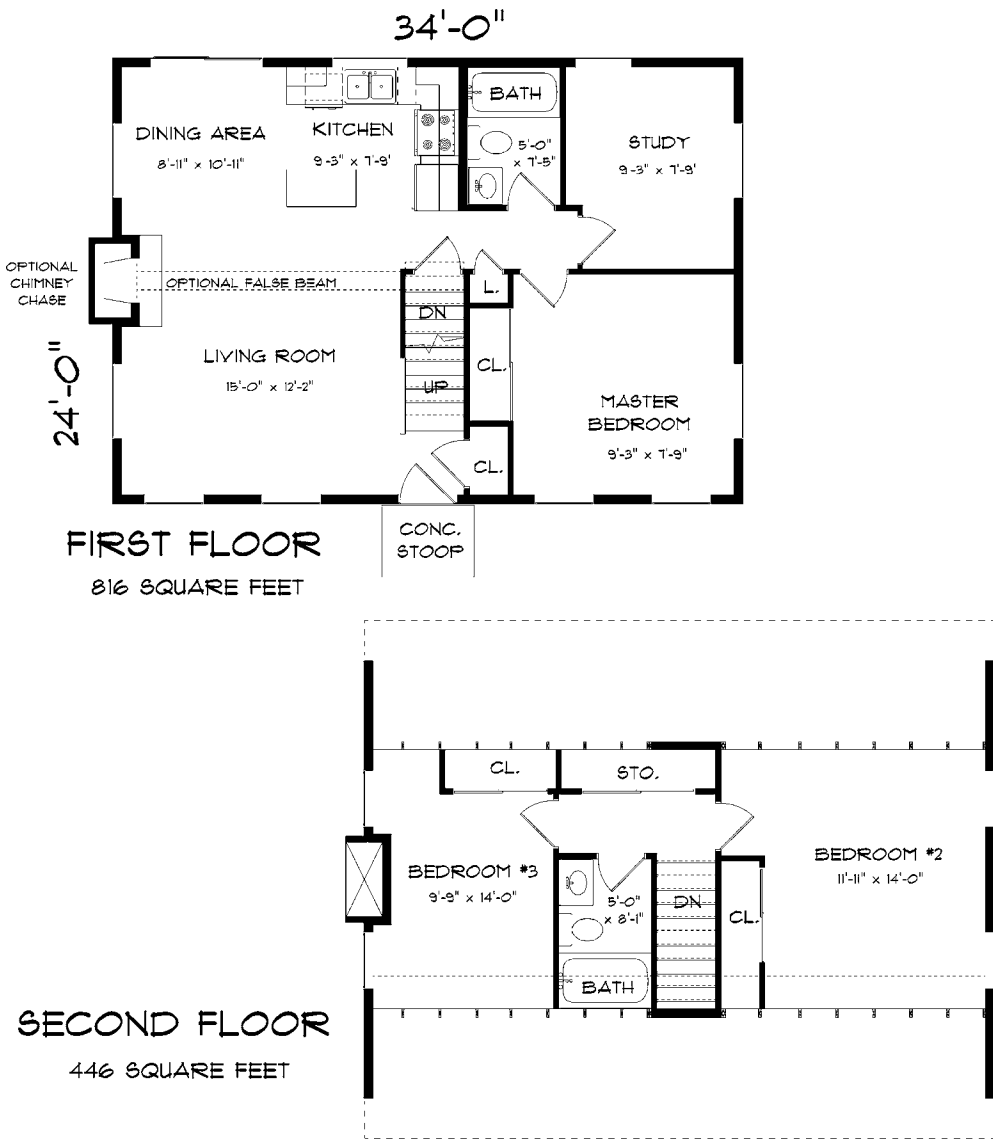


Capes



"We purchased a Barden home for several reasons - a large choice of home styles and an almost unlimited selection of materials from siding to roofing. We were also impressed with the quality of materials used in construction, which ultimately provided a sound house. With the experienced staff available, my wife was able to easily incorporate her ideas into the design. After the construction was complete, our daughter and her husband fell in love with our new home and decided to build their own Barden dream home. We are truly satisfied with our new home and are sure that you will fall in love with yours as well."

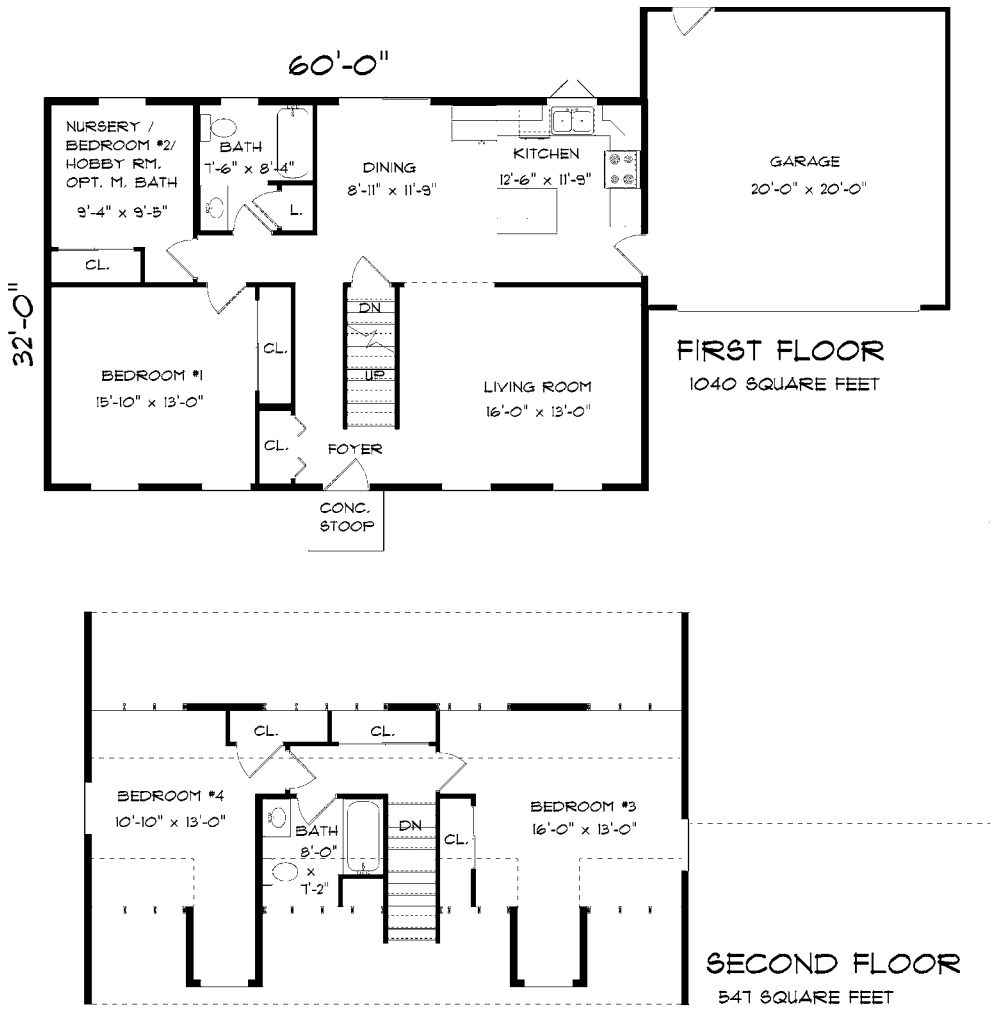




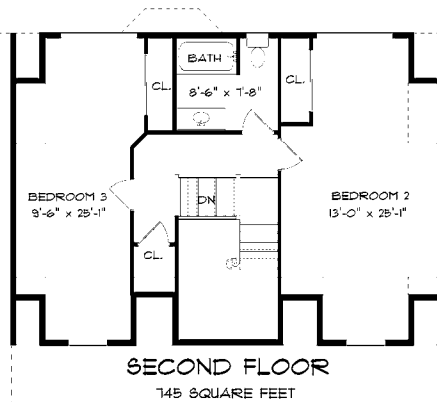
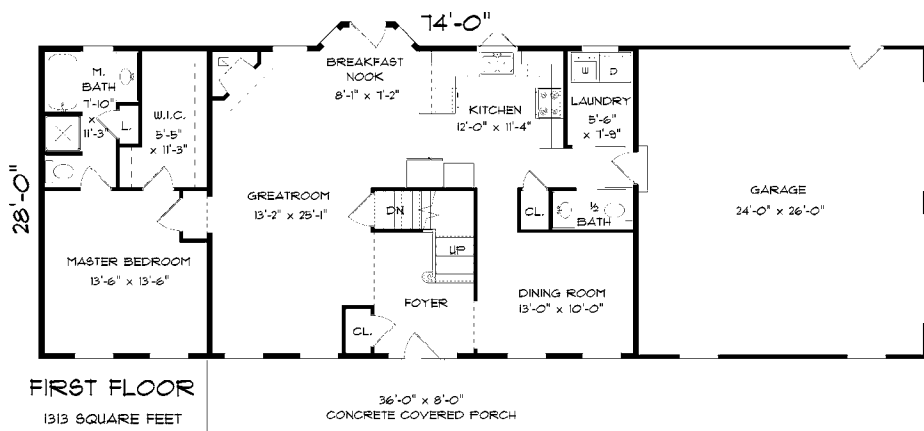
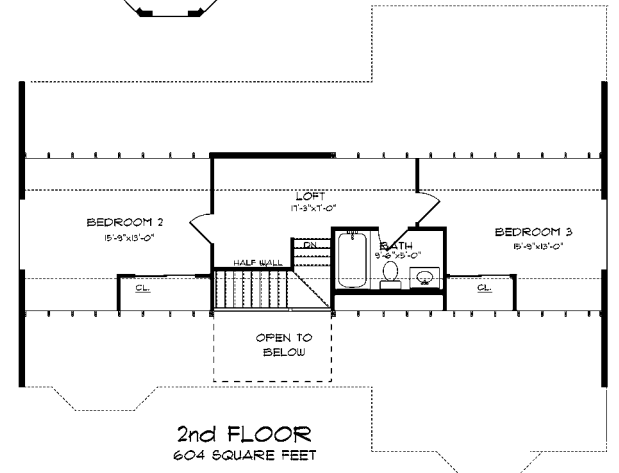
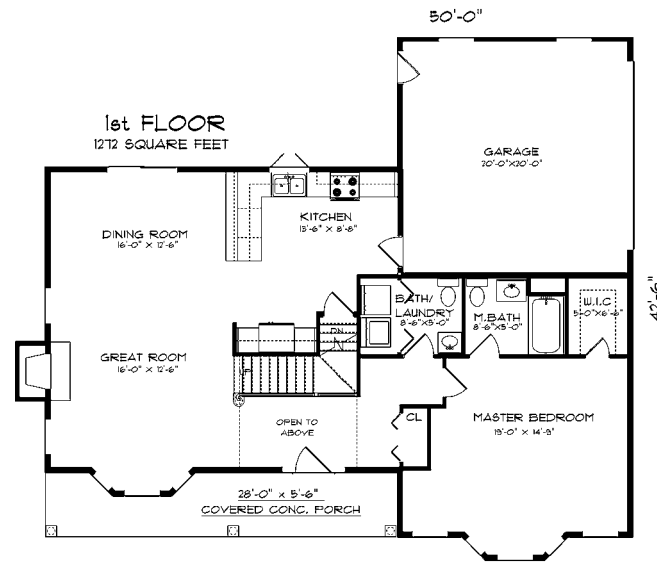
Yorktown 1262 Sq. Ft.



New Haven 1587 Sq. Ft.



1878 Sq. Ft.



2058 Sq. Ft.



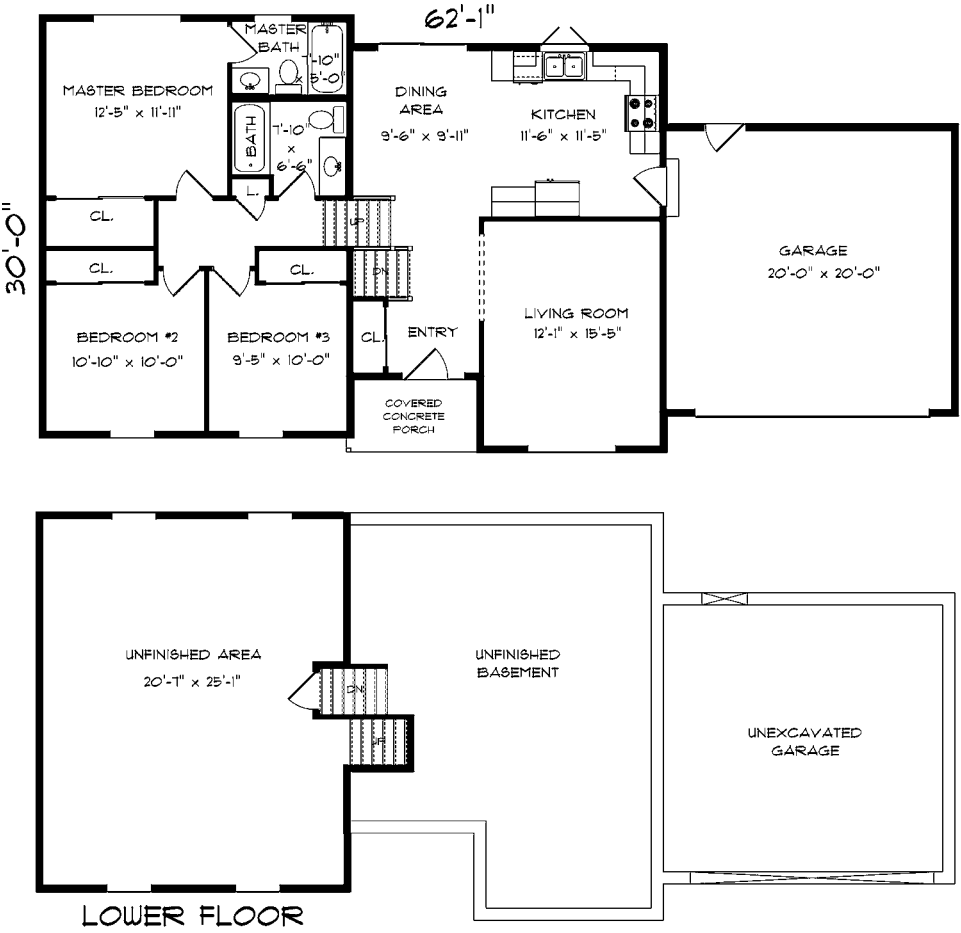
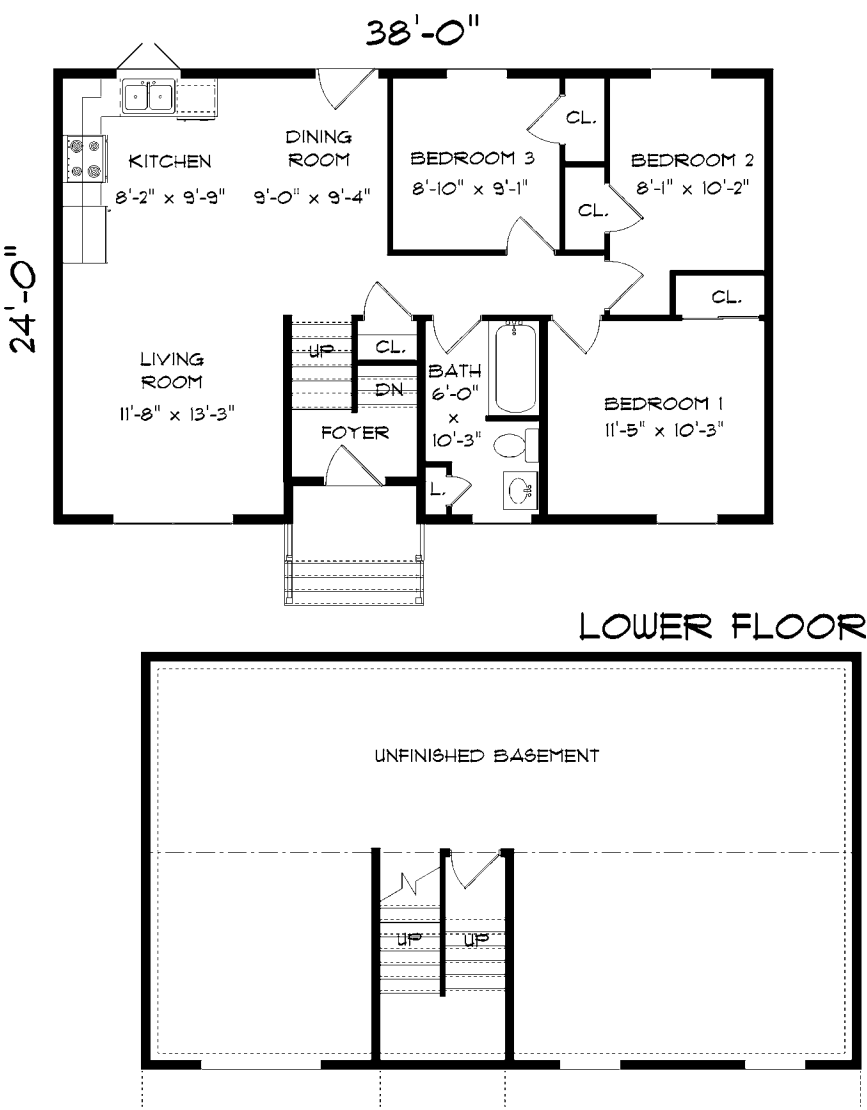
Split Levels

“Barden Homes brings the world of true custom home building into an affordable price range. Our unique architectural design resulted in total satisfaction with the entire home-building process from concept to completion. Barden’s engineering staff and sales support did whatever it took to ensure our satisfaction by going “above and beyond” to make our “dream” home come true.”

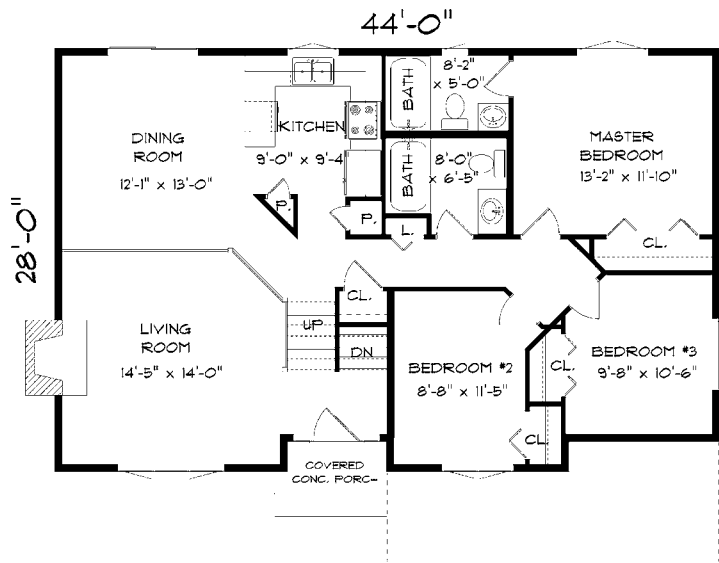




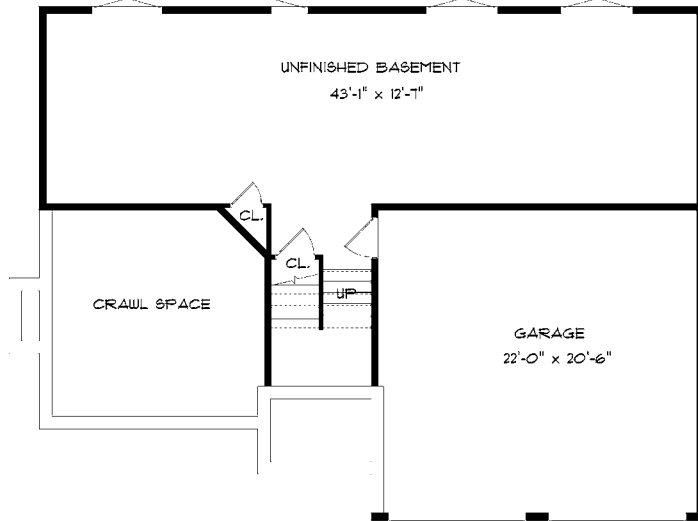
Eagle 899 Sq. Ft.



GLASS PANELS IN OHD NOT INCLUDED IN STANDARD PACKAGE.
Erin's Dream 1183 Sq. Ft.



LOWER FLOOR



Liberty

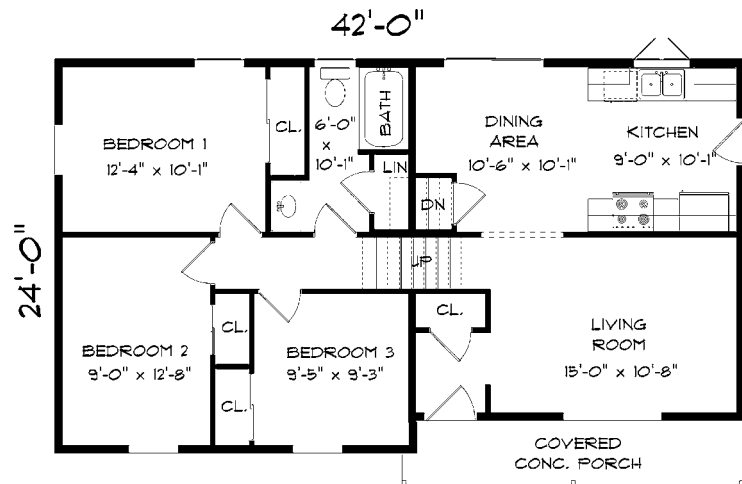
1433 Sq. Ft.



CULTURED STONE AND GLASS PANELS IN OHD ARE NOT INCLUDED IN STANDARD PACKAGE.

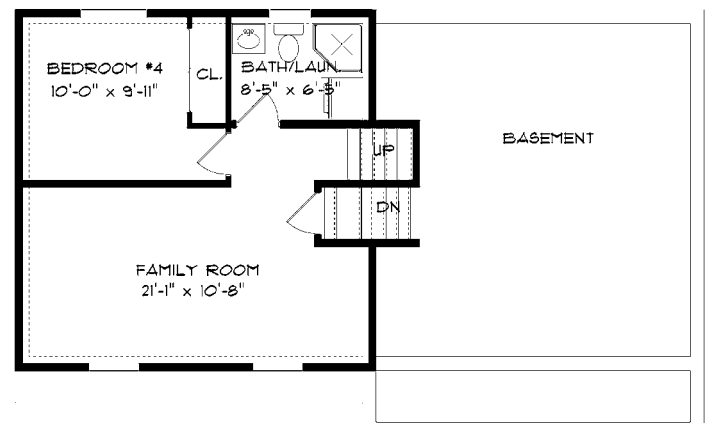
Cumberland

1199 Sq. Ft.



UPPER FLOOR

968 SQUARE FEET



LOWER FLOOR

465 SQUARE FEET

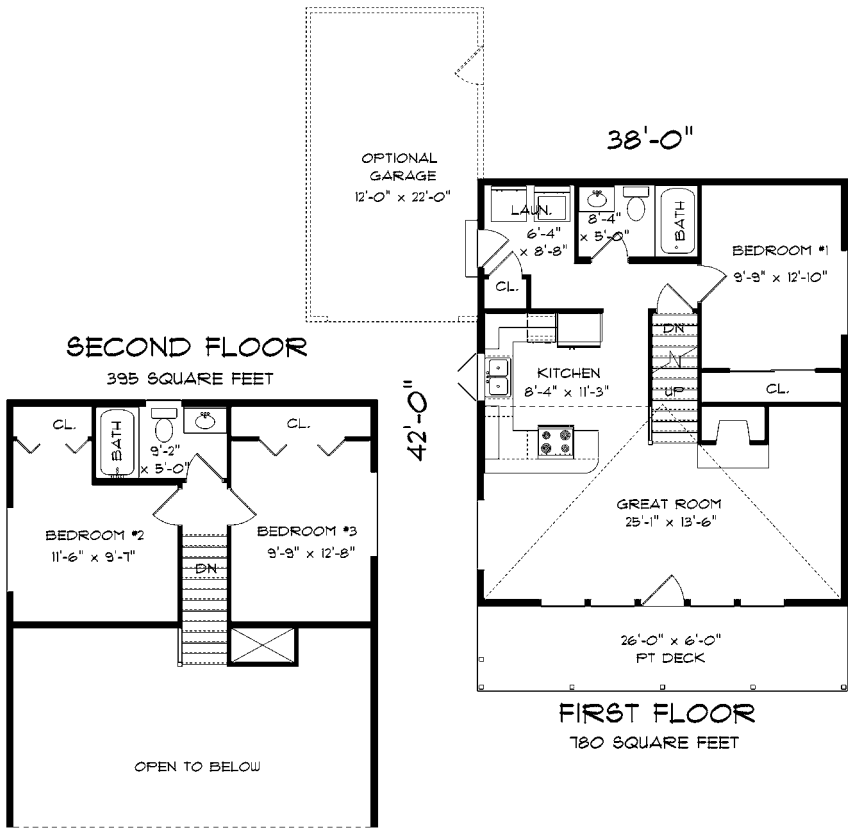


Two Stories



"The thing that impressed us the most about Barden Homes was that we were able to act as our own general contractor and call the shots. We got far more for our money than other builders were able to offer."





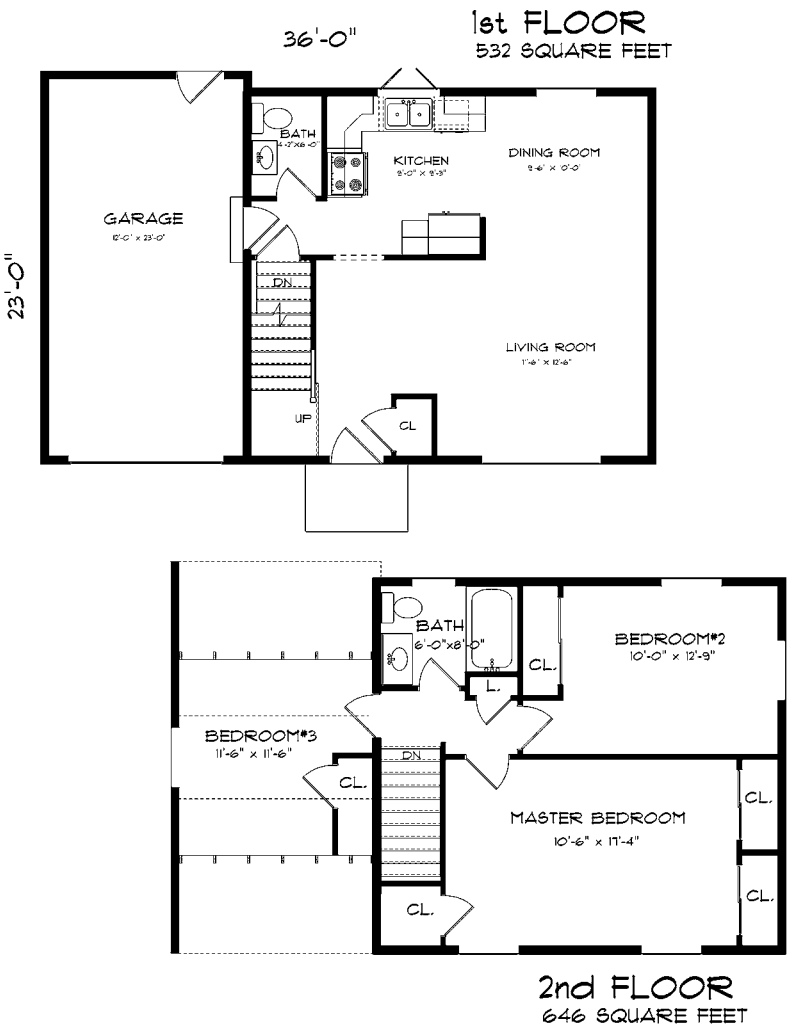
GLASS PANELS IN OHD NOT INCLUDED IN STANDARD PACKAGE.

Vale 1175 Sq. Ft.



GLASS PANELS IN OHD ARE NOT INCLUDED IN STANDARD PACKAGE.

Vernon 1178 Sq. Ft.

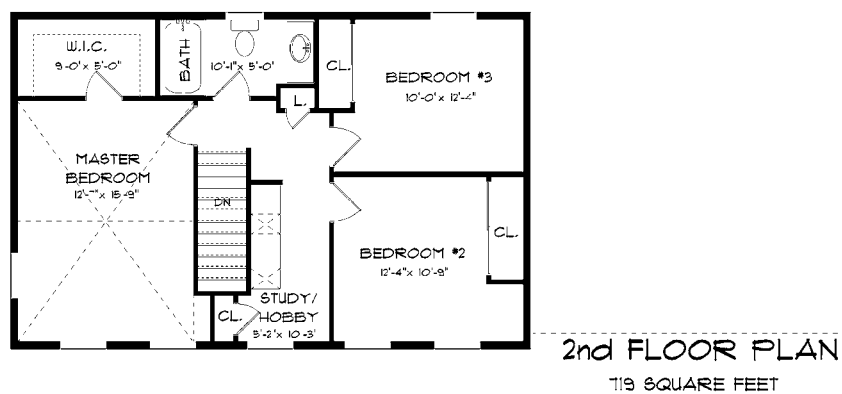
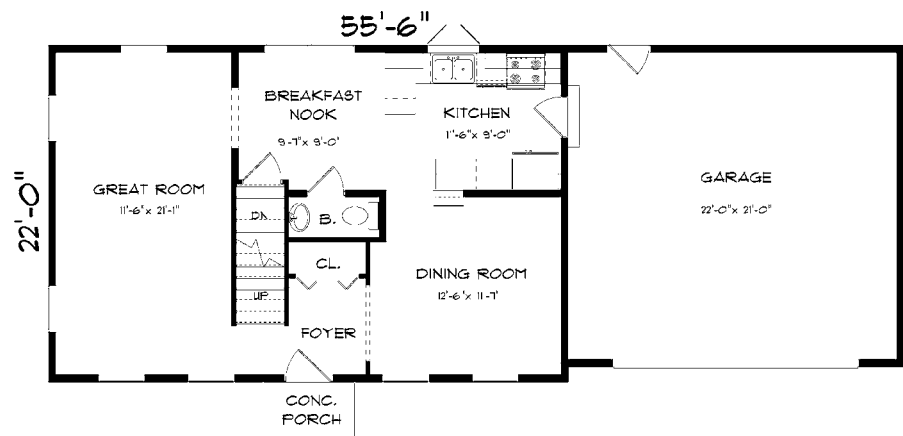
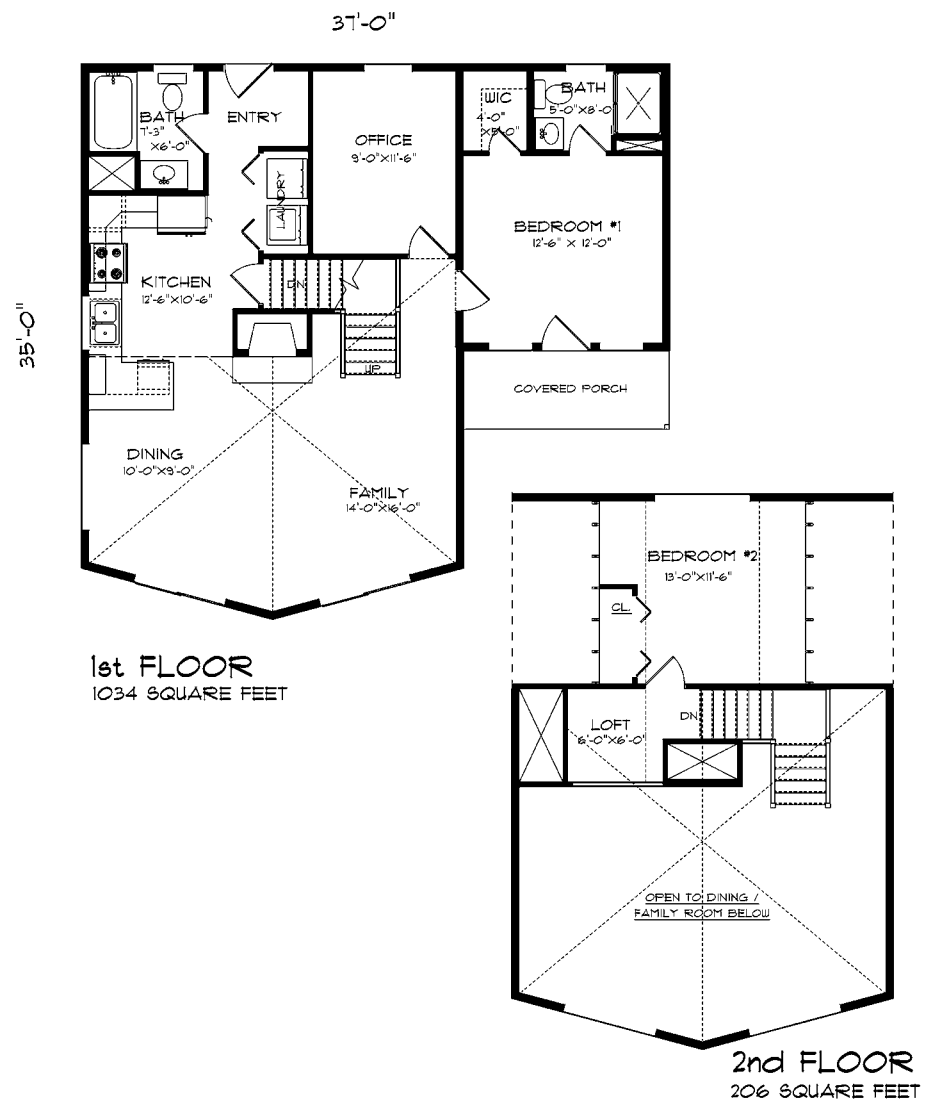




CULTURED STONE NOT INCLUDED IN STANDARD PACKAGE.

Evergreen

1240 Sq. Ft.



GLASS PANELS IN OHD ARE NOT INCLUDED IN STANDARD PACKAGE.

Wellington

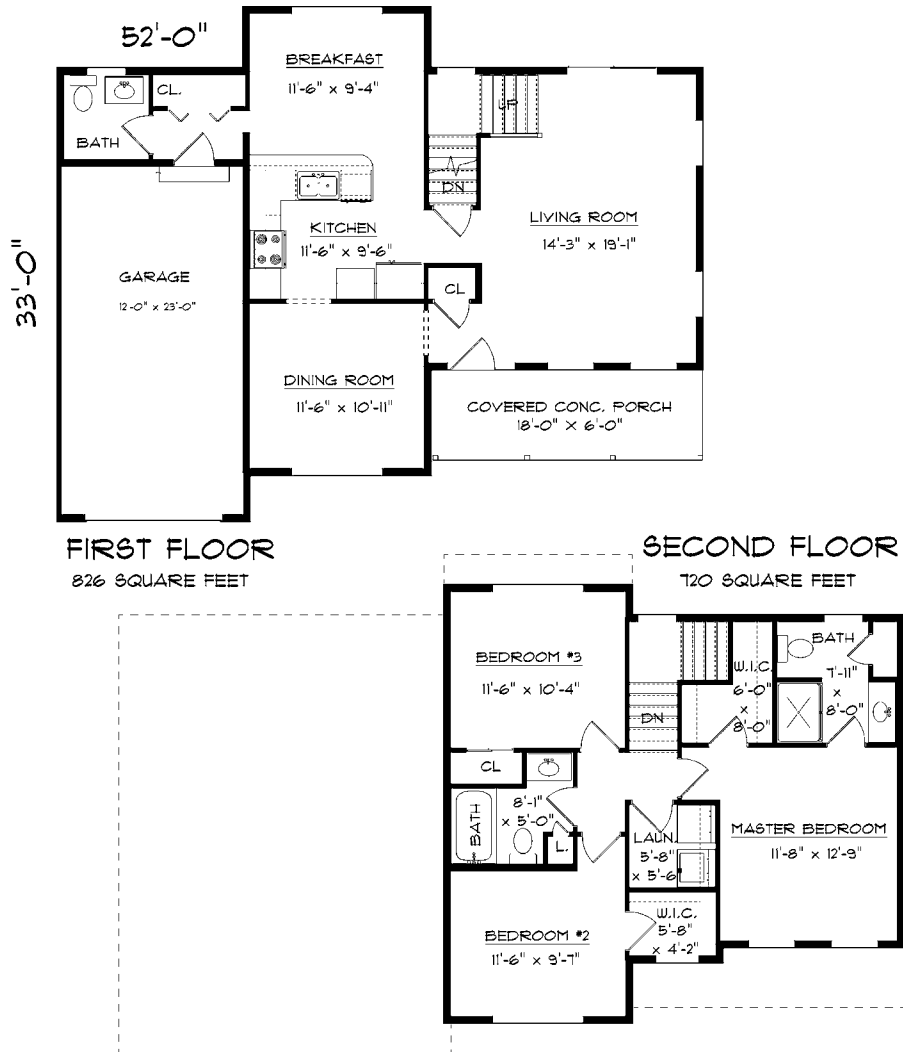
1467 Sq. Ft.



GLASS PANELS IN OHD NOT INCLUDED IN STANDARD PACKAGE.

Princeton

1546 Sq. Ft.



CULTURED STONE AND GLASS PANELS IN OHD ARE NOT INCLUDED IN STANDARD PACKAGE.

Thomas Terrace

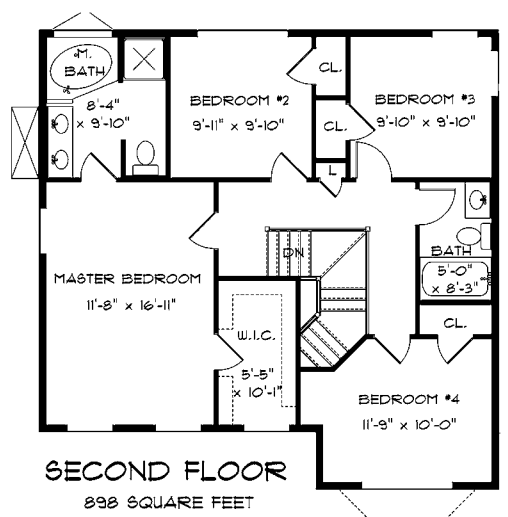
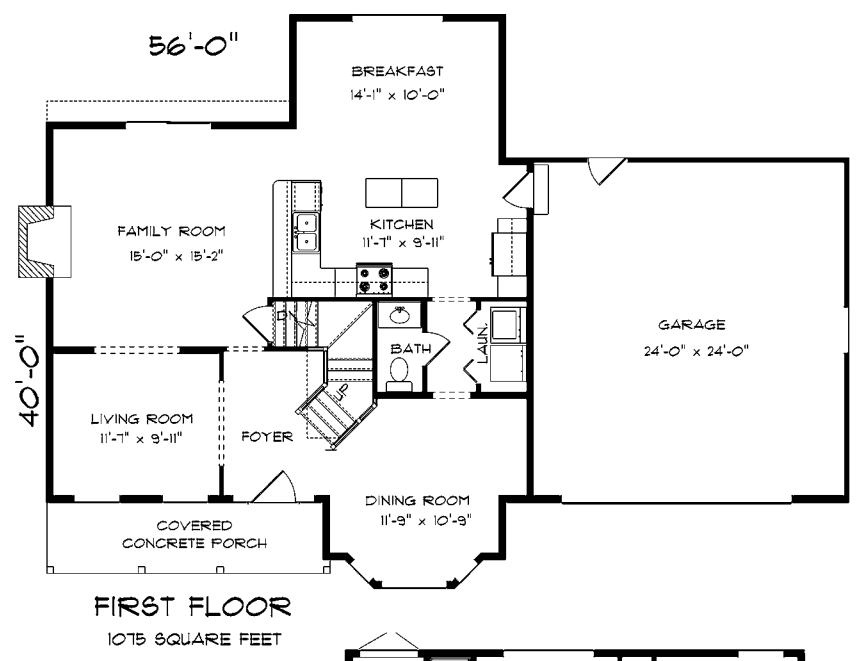
1674 Sq. Ft.



1760 Sq. Ft.

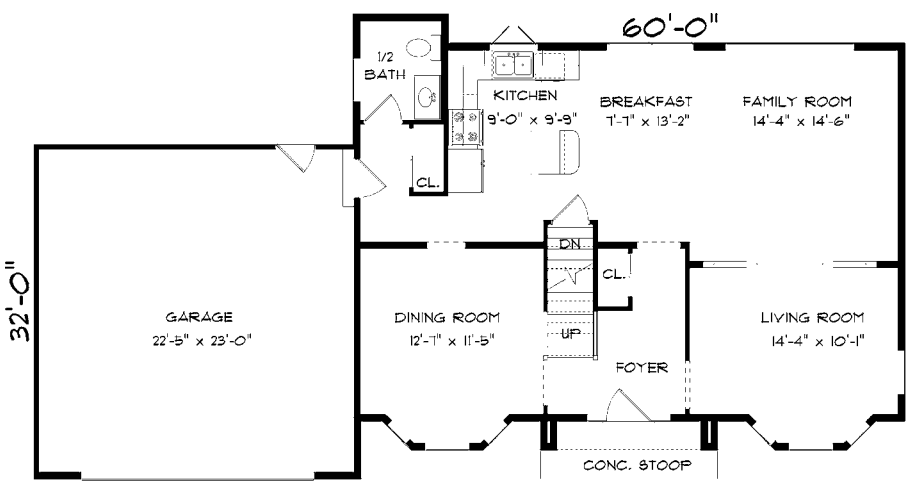


1899 Sq. Ft.

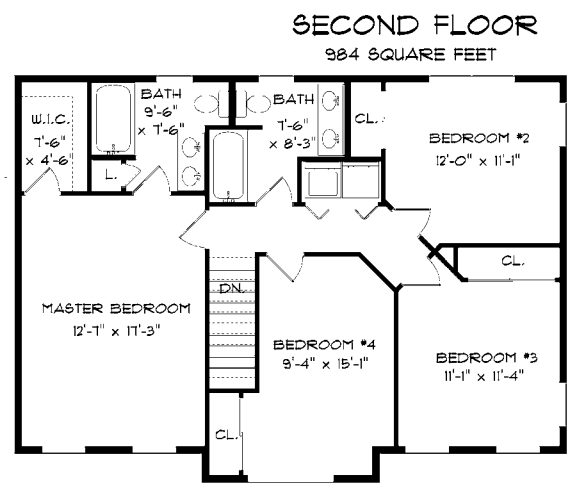


CULTURED STONE NOT INCLUDED IN STANDARD PACKAGE.

Autumnview 1973 Sq. Ft.



FIRST FLOOR
1029 SQUARE FEET



SECOND FLOOR
984 SQUARE FEET



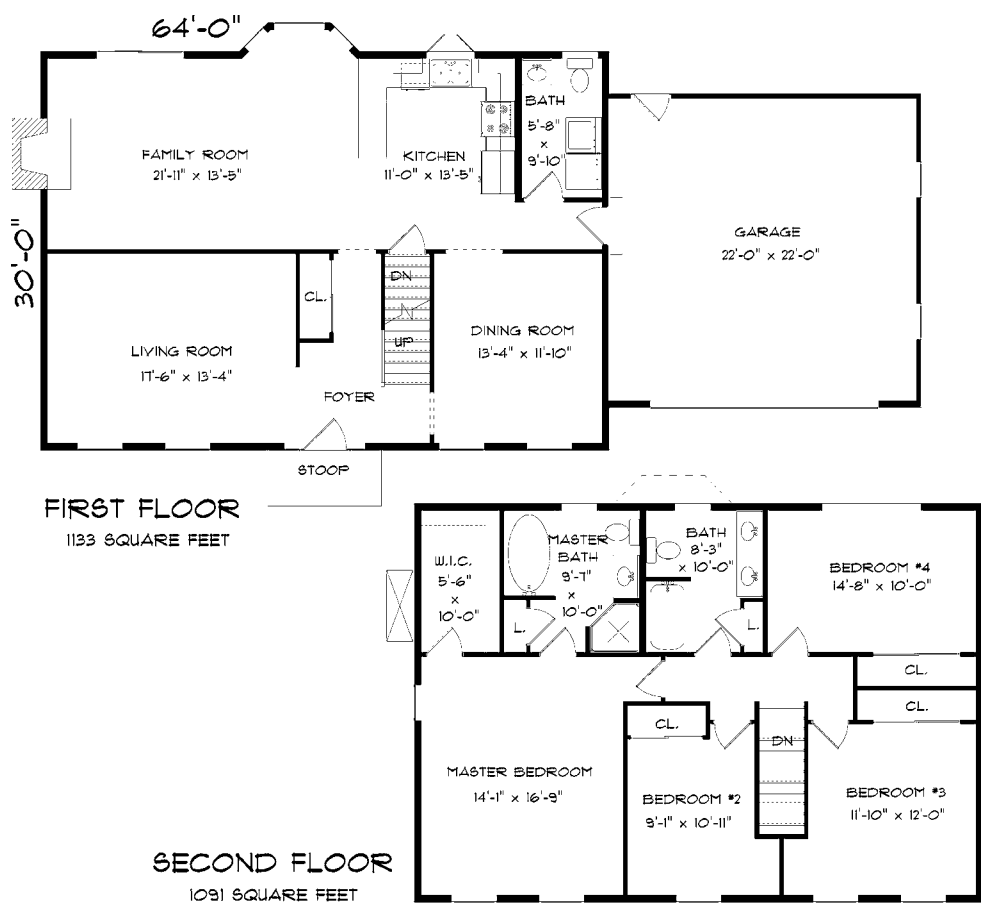
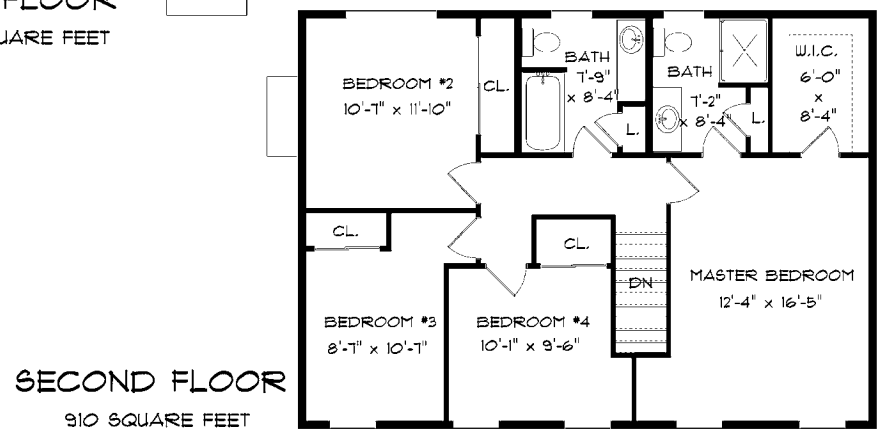
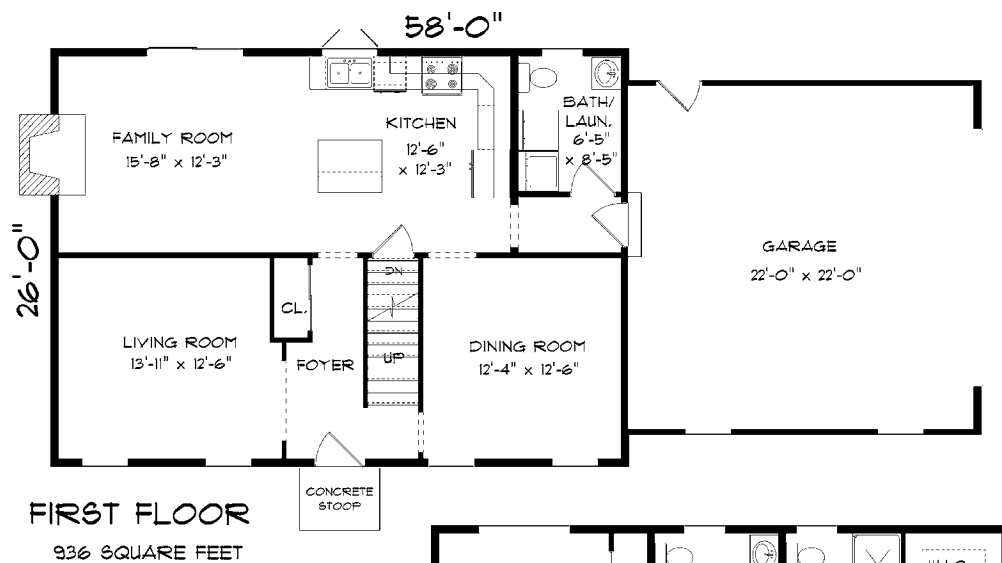
GLASS PANELS IN OHD ARE NOT INCLUDED IN STANDARD PACKAGE.

Wilshire 2013 Sq. Ft.





Ethan Allen I 1846 Sq. Ft.



Ethan Allen II 2224 Sq. Ft.



Ethan Allen III 1985 Sq. Ft.



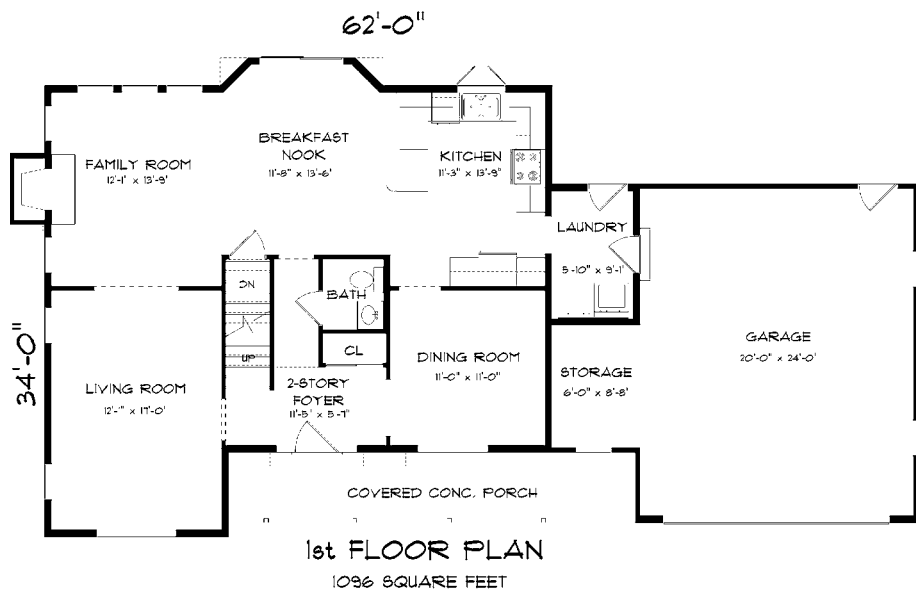
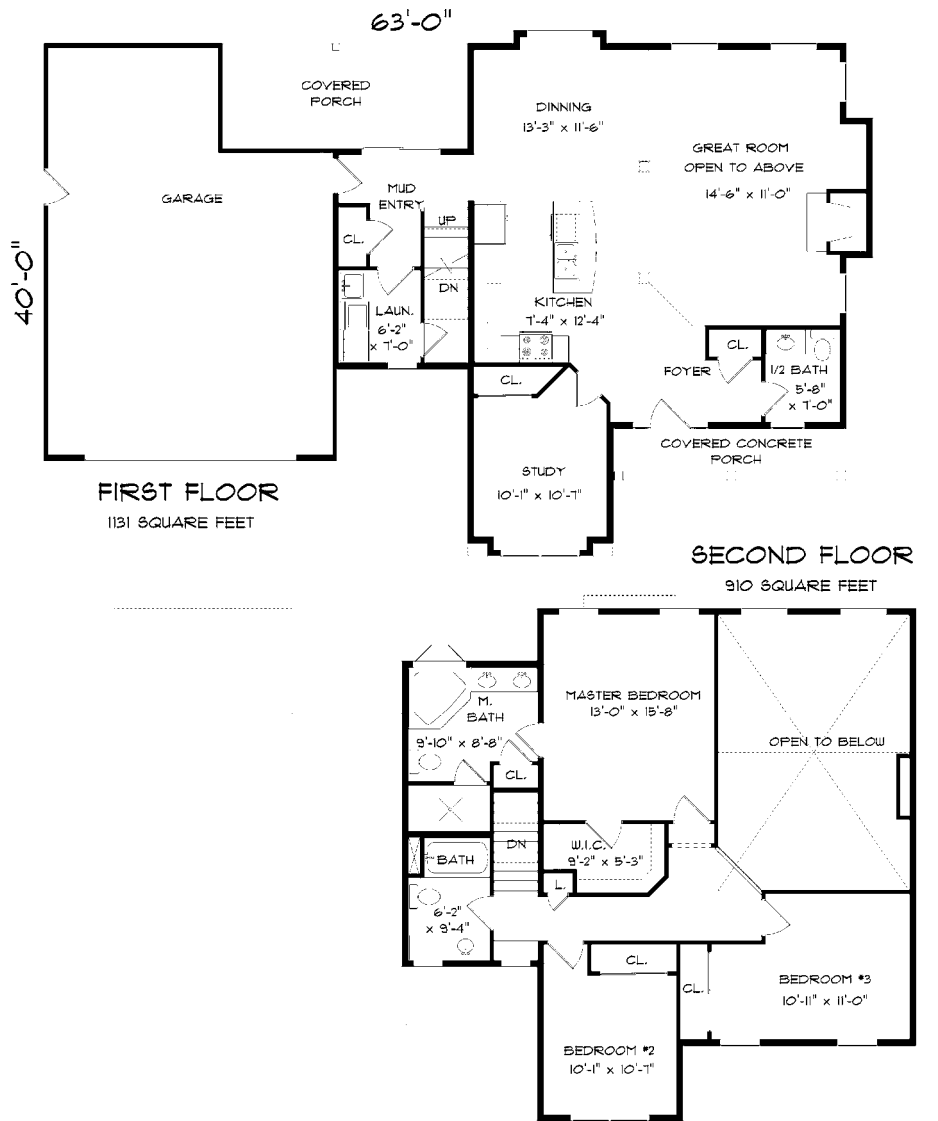
Ethan Allen IV 2136 Sq. Ft.



CULTURED STONE AND GLASS PANELS IN OHD ARE NOT INCLUDED IN STANDARD PACKAGE.

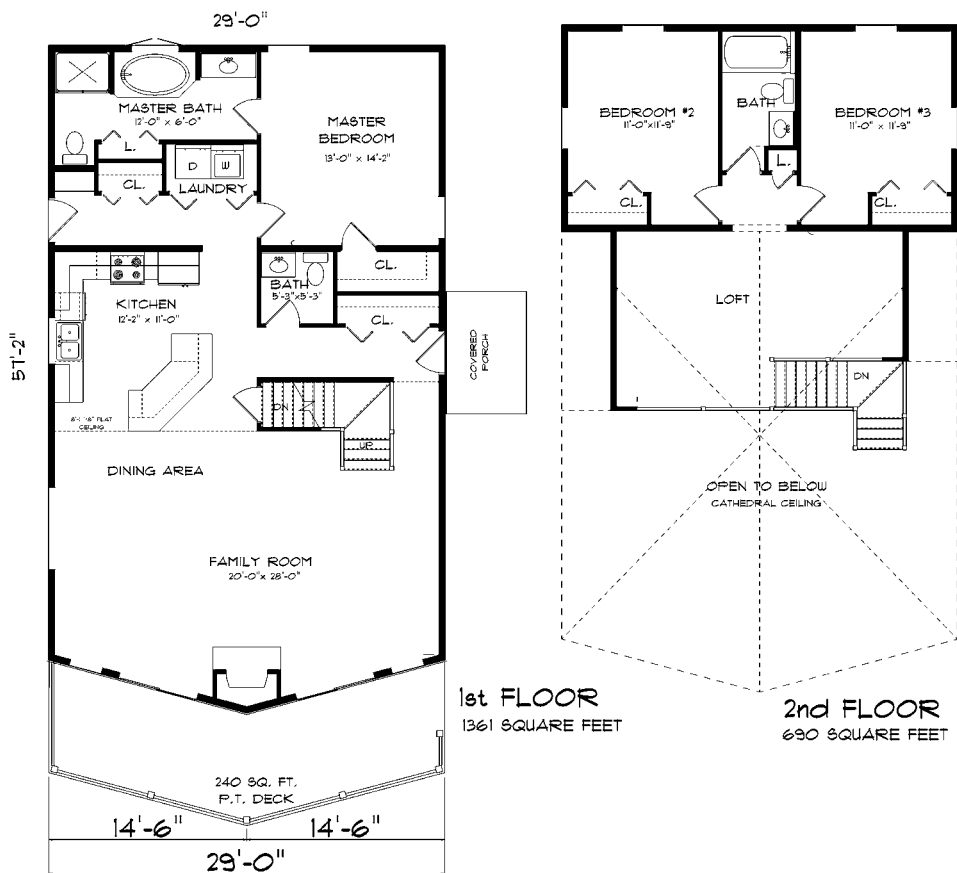
Ostrander's Orchard

2041 Sq. Ft.



Lindsay

2046 Sq. Ft.



CULTURED STONE NOT INCLUDED IN STANDARD PACKAGE.

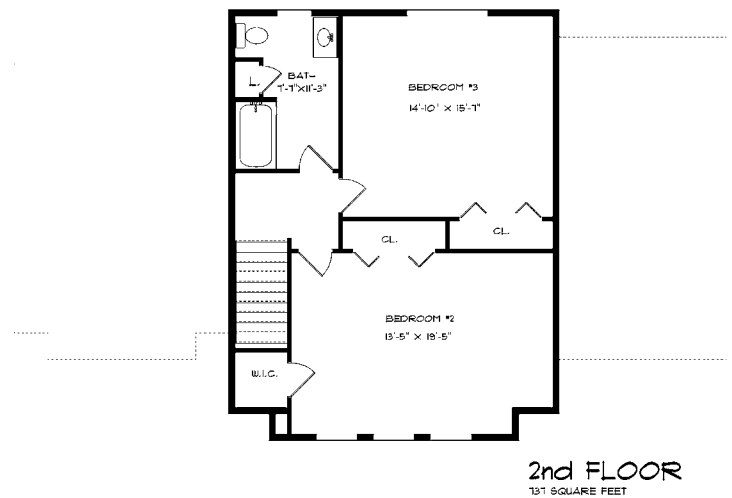
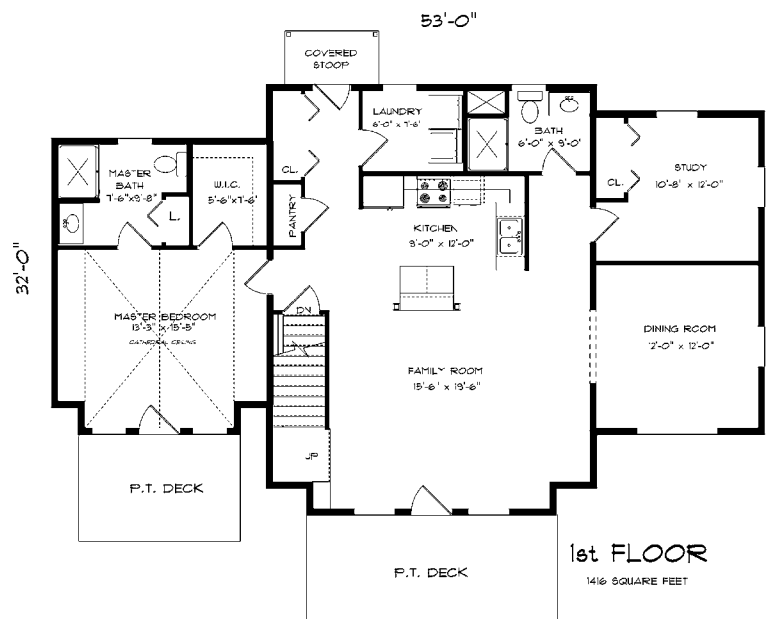
Golden Hill

2051 Sq. Ft.



Wisteria

2153 Sq. Ft.



1st FLOOR PLAN
1221 SQUARE FEET

Overall Dimensions: 51'-0" (width) x 41'-6" (depth)

Rooms and Dimensions:

- GARAGE: 22'-0" x 30'-0"
- DINING ROOM: 13'-0" x 14'-4"
- KITCHEN: 12'-5" x 14'-0"
- BREAKFAST NOOK: 14'-1" x 11'-1"
- LAUNDRY ROOM: 8'-6" x 9'-5"
- GREAT ROOM: 14'-6" x 23'-7"
- P.T. DECK: 10'-0" x 16'-0"
- COVERED CONC. PORCH

Other features include a BATH (B.), a FOYER, and a CL. (Closet).

The floor plan for the second floor includes the following rooms and features:

- MASTER BEDROOM:** 13'-1" x 23'-1"
- MASTER BATH:** 10'-2" x 11'-8"
- CL. (Closet):** Located near the Master Bedroom and Master Bath.
- W.I.C. (Walk-In Closet):** 7'-0" x 9'-5"
- BEDROOM #2:** 13'-9" x 12'-0"
- BEDROOM #3:** 11'-2" x 13'-10"
- BATH:** 5'-0" x 9'-1"
- OPEN TO BELOW:** A large open area in the center of the floor plan.
- CL. (Closet):** Located near the Open to Below area.
- CL. (Closet):** Located near the Open to Below area.

54'-0"

38'-0"

DINING ROOM
11'-6" x 13'-4"

KITCHEN
11'-11" x 13'-4"

BREAKFAST AREA
9'-1" x 13'-4"

FAMILY ROOM
19'-5" x 13'-4"

LIVING ROOM
11'-6" x 15'-3"

BATH

LAUN.

STUDY
9'-4" x 11'-4"

GARAGE
20'-5" x 21'-9"

COVERED PORCH

P.

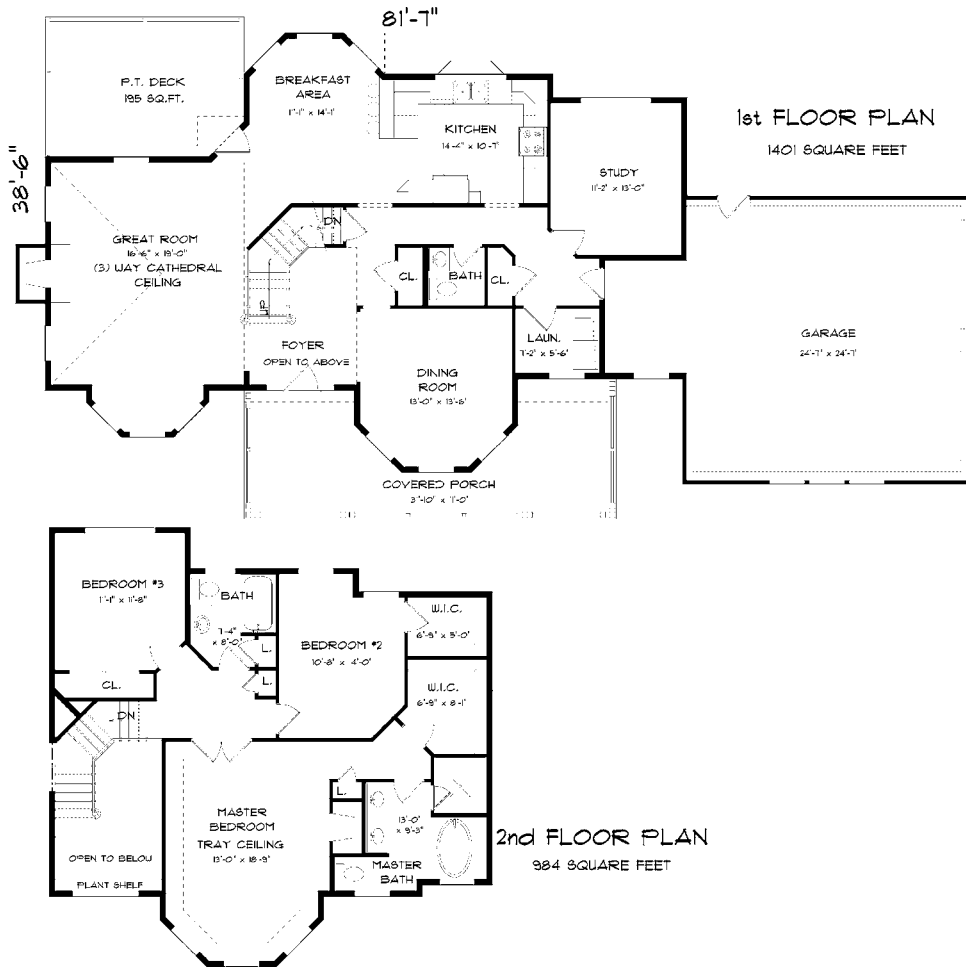
DN

UP

CL.

SECOND FLOOR
983 SQUARE FEET





*Hughston
Hideaway*

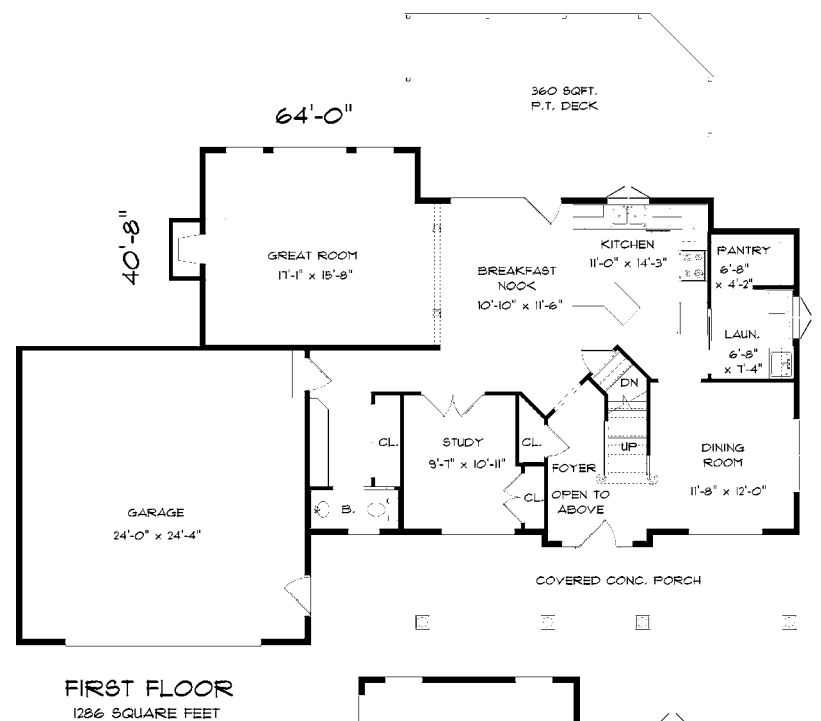
2385 Sq. Ft.



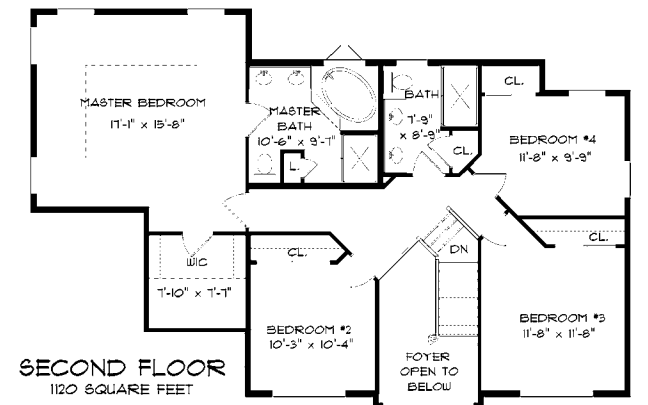
CULTURED STONE NOT INCLUDED IN STANDARD PACKAGE.

Brentwood

2406 Sq. Ft.



FIRST FLOOR
1286 SQUARE FEET

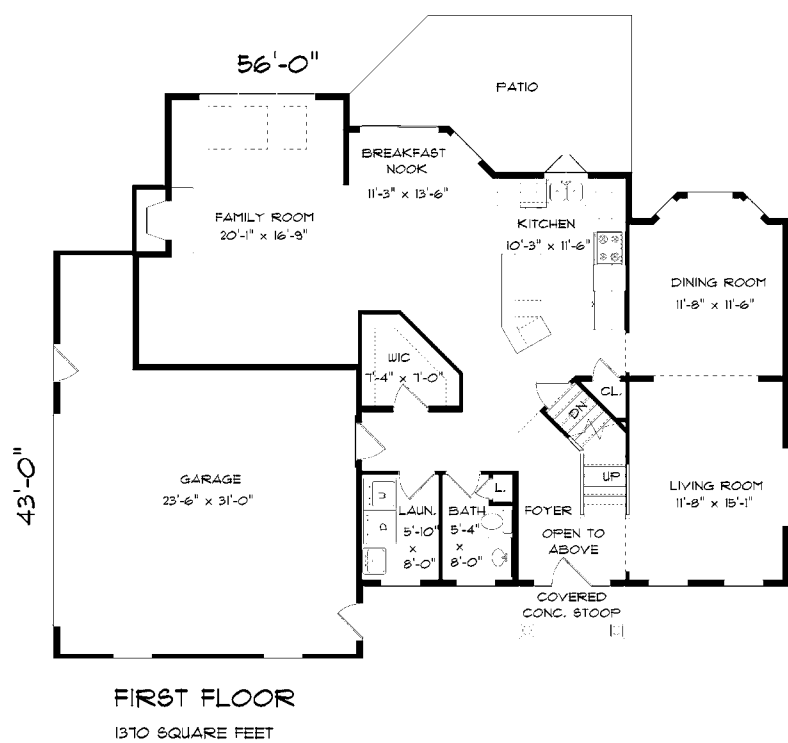
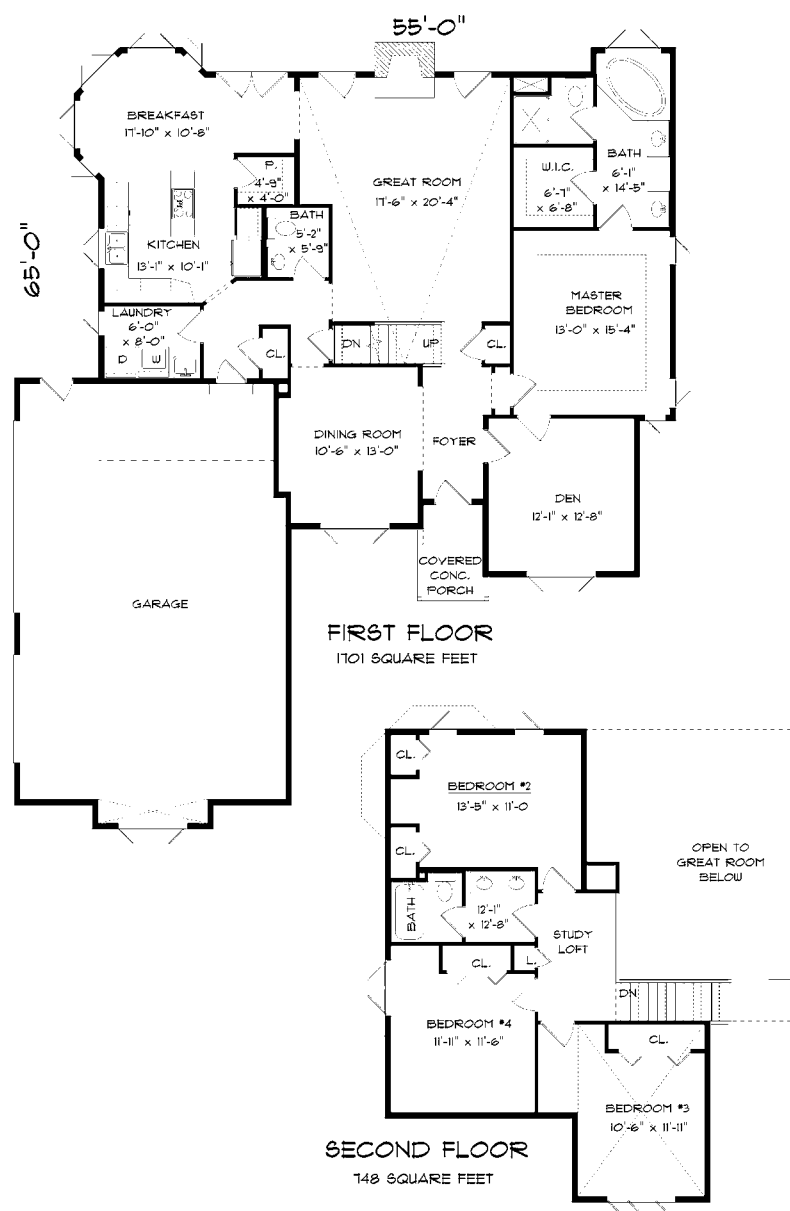


SECOND FLOOR
1120 SQUARE FEET



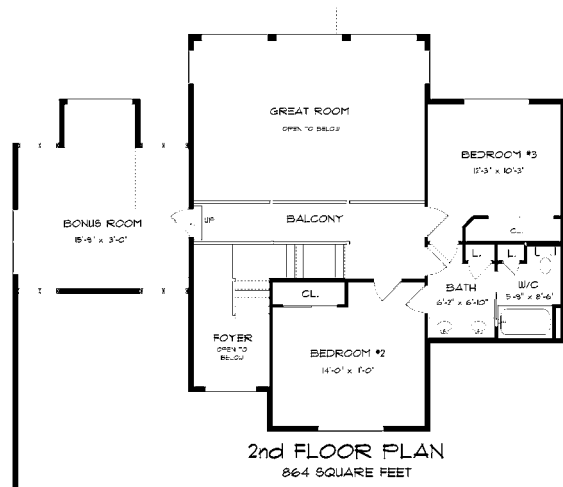
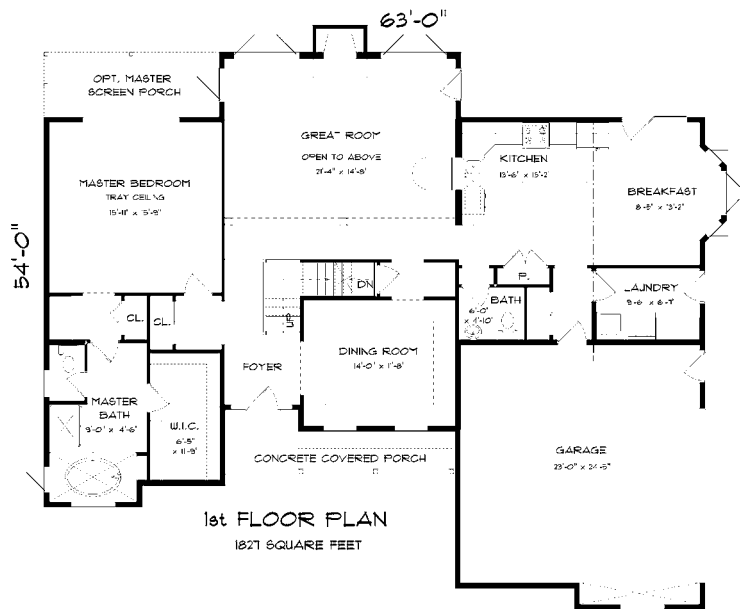
Moreland

2449 Sq. Ft.



Kensington

2480 Sq. Ft.



CULTURED STONE NOT INCLUDED IN STANDARD PACKAGE.

Genevieve

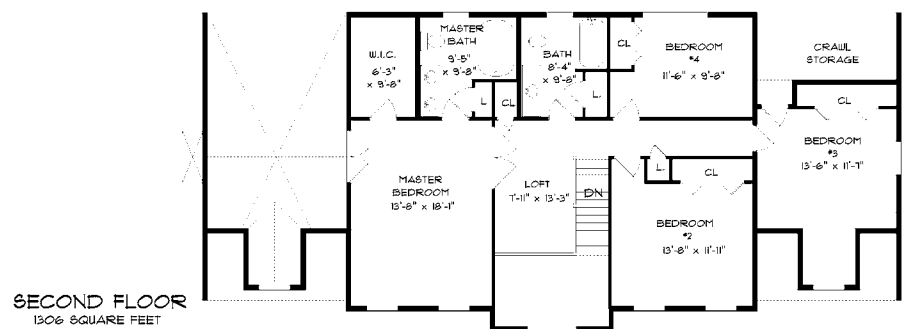
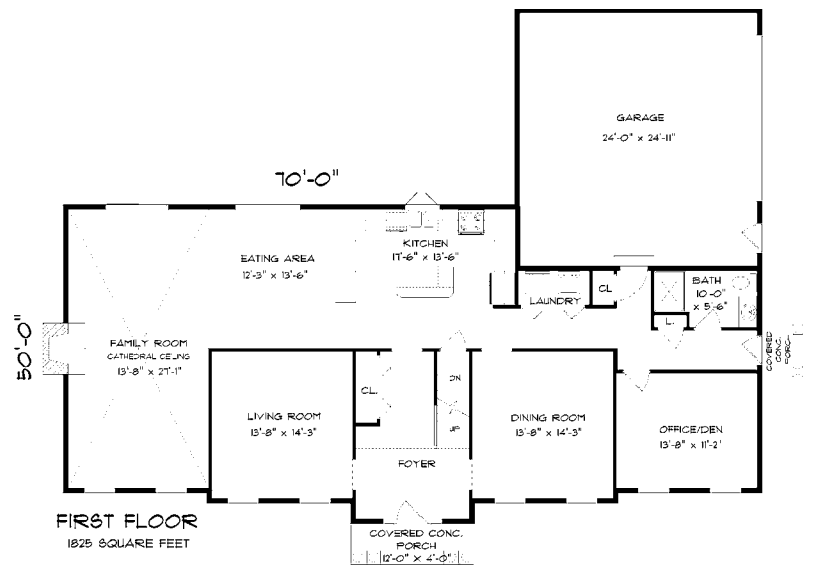
2691 Sq. Ft.



CULTURED STONE NOT INCLUDED IN STANDARD PACKAGE.

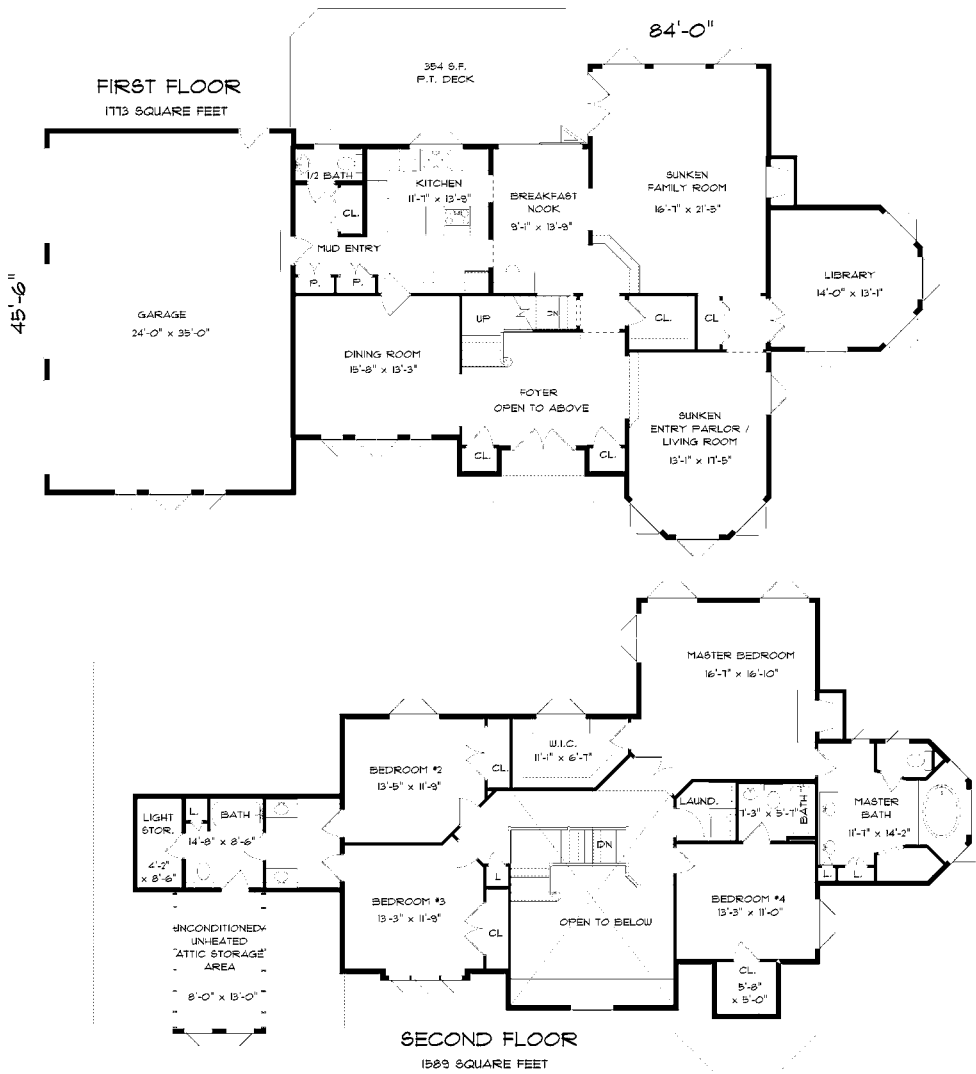
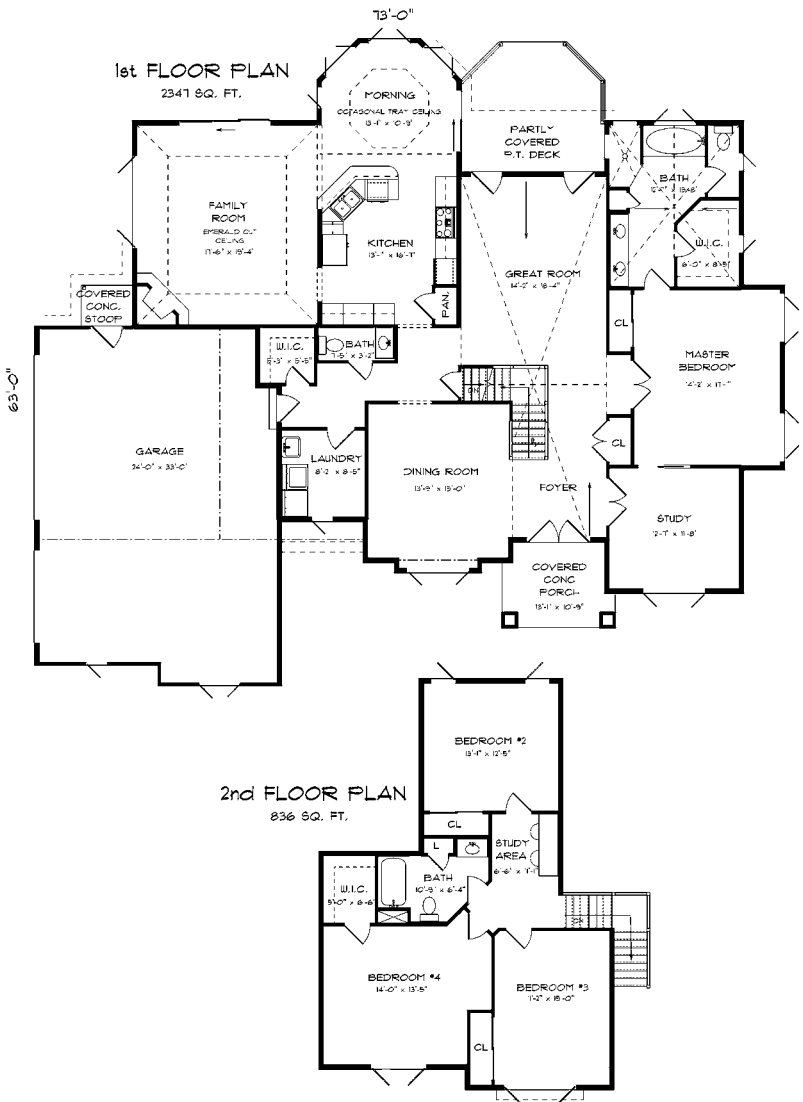
Arlington

3131 Sq. Ft.

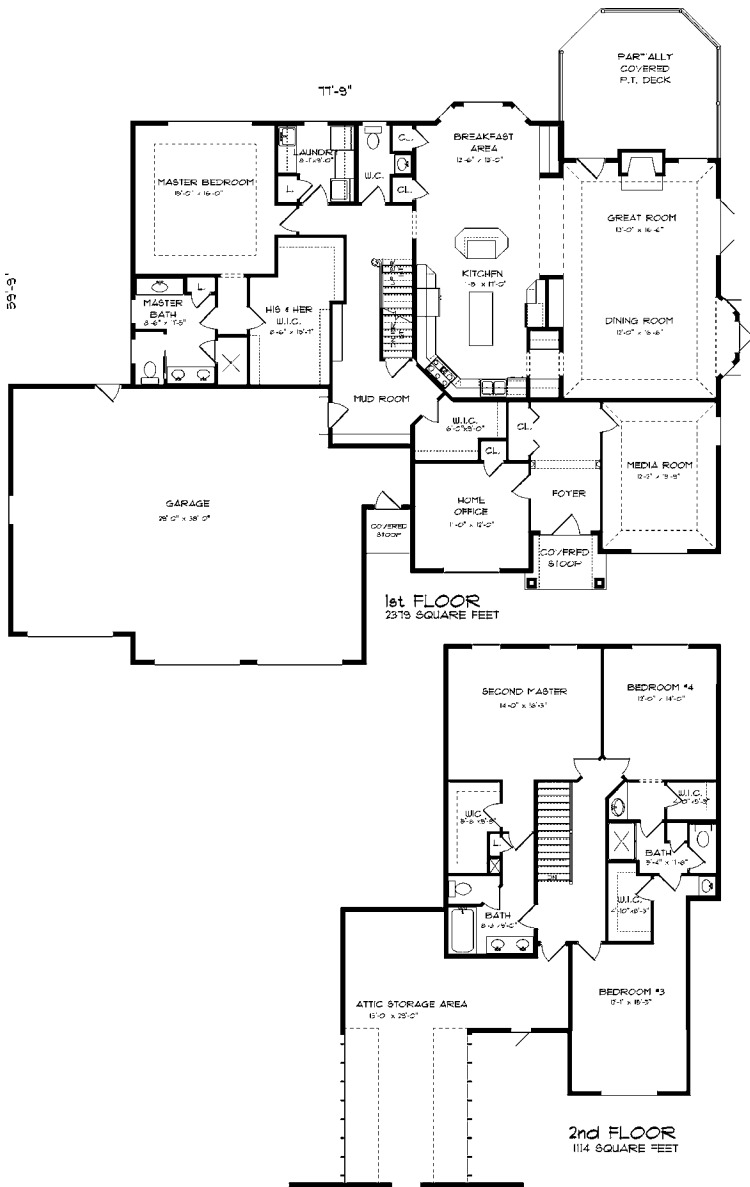




CULTURED STONE AND COPPER ROOFING NOT INCLUDED IN STANDARD PACKAGE.
Stratford 3183 Sq. Ft.



New Castle 3362 Sq. Ft.



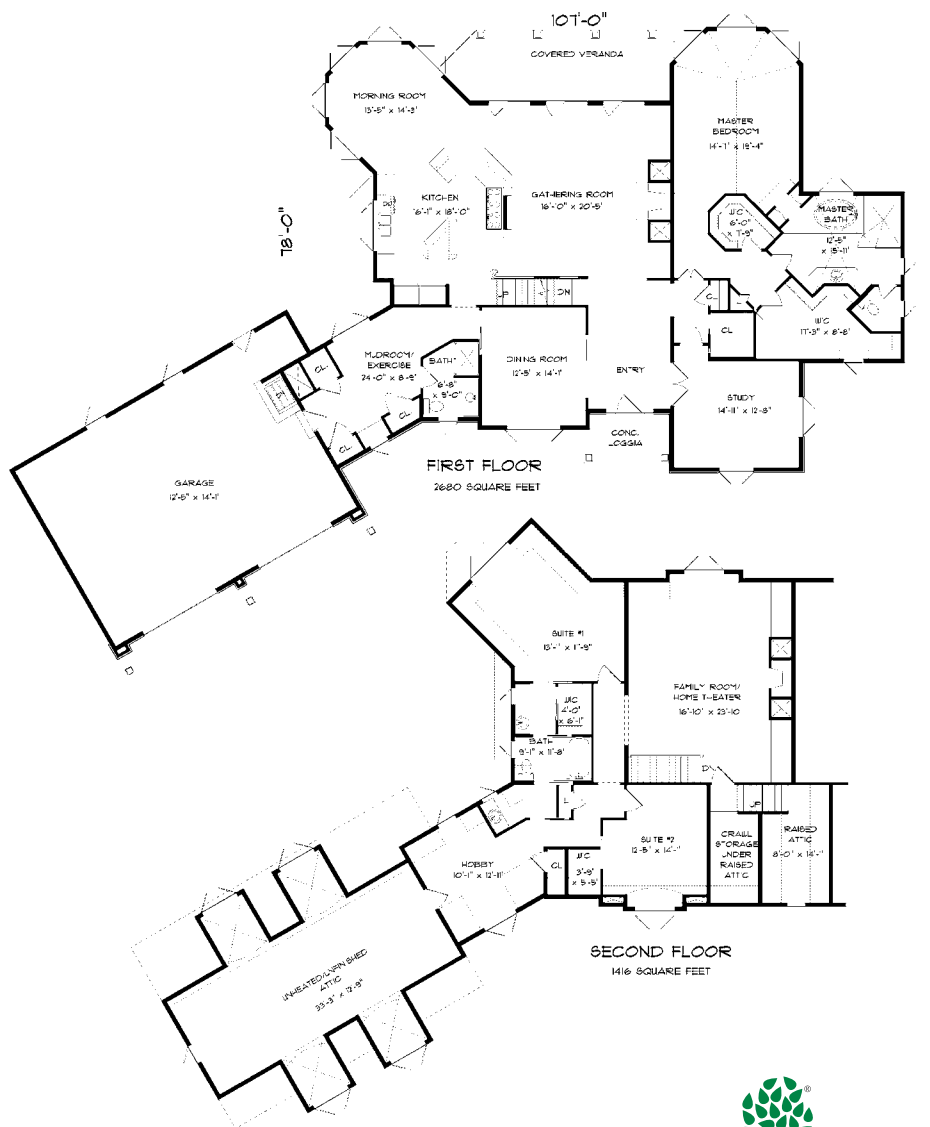
Lancaster

3493 Sq. Ft.



Serini

4096 Sq. Ft.





"We would never have been able to build our 'dream log home' without the assistance of the Patlins and their team.

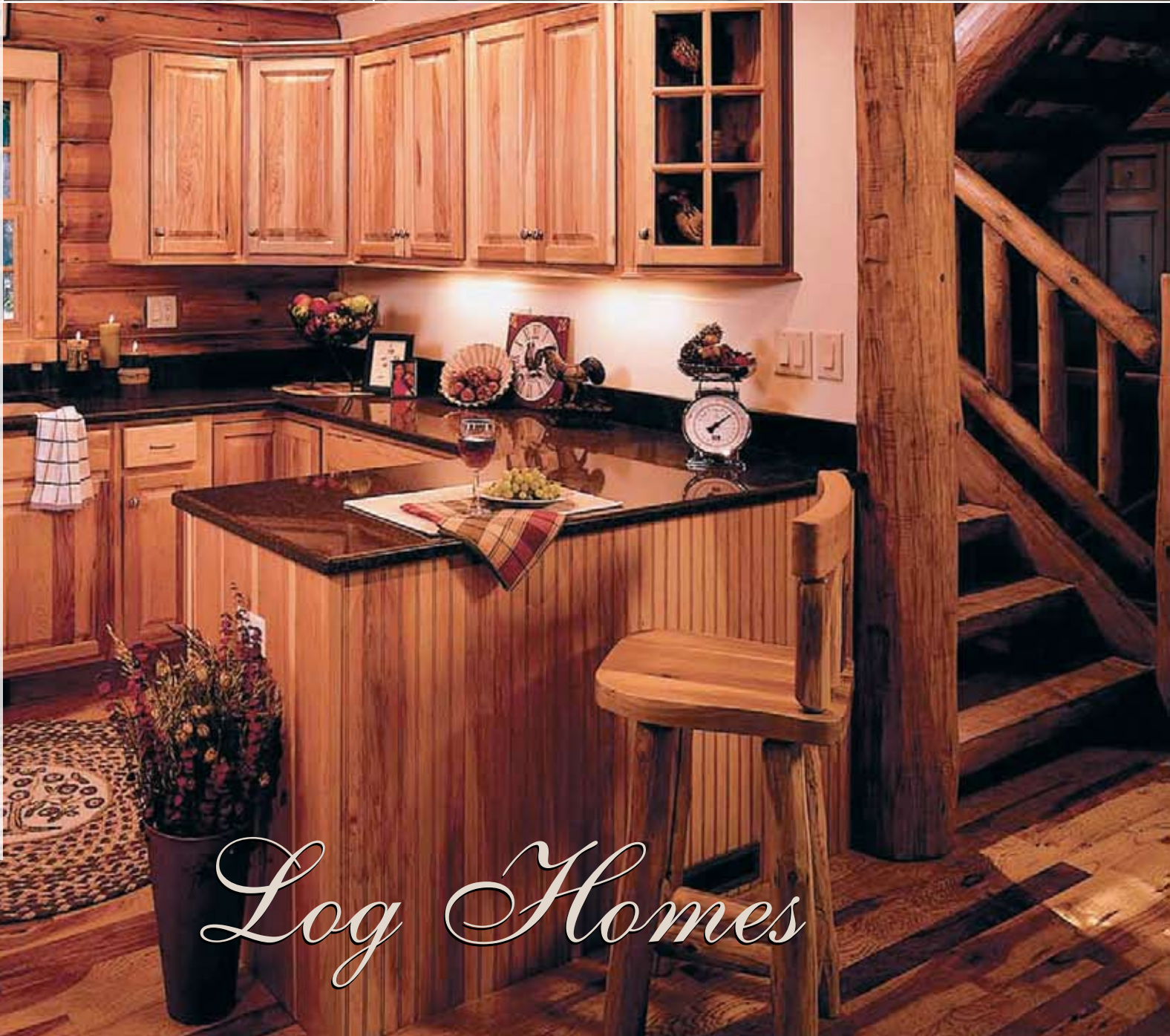
Prior to our decision to build, Steve walked various sites with us and helped determine the perfect lakefront setting for our house. Nikki held our hand through the design process and helped us visualize all of the factors which led to our decisions. Leslie helped us with our budget planning and gave us direction as to where our dollars would be best spent.

The entire Patlin team was responsive to our phone calls and e-mails in the most reassuring manner. They were always there to brainstorm with us in times when we otherwise would have overreacted to manageable problems.

Tim was always available to answer construction questions and give us his expert advice regarding the quality of the work.

Our house was a large project totaling 6,000 sf including the walkout. We are thrilled with the results and actually enjoyed the building process thanks to the Patlins. Our faith in the integrity of the Patlins was the key component of our taking on this project. They never disappointed us.

We are happy to share our thoughts about our experience !!!"



Log Homes



BARDEN LOG, PANELIZED LOG & ECONOMY LOG PACKAGES

FLOOR DECK: 2x6 Plate, LVL Girder, 3/4” high performance OSB subfloor, 2x10 Floor joists (or sized to spans), cement-filled lally columns, & hardware. Wood I-joists available as an option unless noted as standard. (Note: Floor deck may not be included with homes shipped over 200 miles from the factory)

DECKS/PORCHES: PT joists, decking, railings & balusters per plan. 6x6 pine posts, pine headers, and 1x6 T&G pine ceiling on porches. Porches have 12” or 24” overhangs. All decks and wood porches are included unless marked “optional”.

EXTERIOR WALLS:

Barden Log Package: 1st floor exterior walls are 8x8 cant full timber “D” Log, single or double clapboard Log, or square log. Starter course. Notch & Pass style pre-cut corners. Other logs & corner styles available by quote. 2nd floor exterior walls are 2x6 Studs @ 16” OC w/ 7/16” OSB sheathing. T&G Log siding on the exterior, 1x9 T&G pine on the interior. Second floor exterior corners & dormers will have corner boards unless directly over a 1st floor exterior corner, where they will be crisscrossing log corners.

Barden Panelized Log Package: 1st floor exterior walls are 2x6 Studs @ 16” OC w/ 7/16” OSB sheathing. Wall height per plan, but standard is 8’-1 1/8” if not specified. T&G Log siding on the exterior, crisscrossing log exterior corners, 1x9 T&G pine on the interior. 2nd floor exterior walls are 2x6 Studs @ 16” OC w/ 7/16” OSB sheathing. T&G Log siding on the exterior, 1x9 T&G pine on the interior. Second floor exterior corners & dormers will have corner boards unless directly over a 1st floor exterior corner, where they will be crisscrossing log corners.

Barden Economy Log Package: 1st floor exterior walls are 2x6 Studs @ 16” OC w/ 7/16” OSB sheathing. Wall height per plan, but standard is 8’-1 1/8” if not specified. T&G Log siding on the exterior, crisscrossing log exterior corners. 2nd floor exterior walls are 2x6 Studs @ 16” OC w/ 7/16” OSB sheathing. T&G Log siding on the exterior. Second floor exterior corners & dormers will have corner boards unless directly over a 1st floor exterior corner, where they will be crisscrossing log corners. NO 1x9 included for interior.

INTERIOR WALLS: panelized 2x4 studs @ 16” OC. 2x6 for plumbing or bearing walls where required. Cabinet blocking & drywall corner studs where required. 1x9 T&G optional.

ROOFING: trusses or precut rafters per plan, 5/8” OSB Sheathing, paper felt, 30-year Landmark architectural shingles, hurricane clips, 1x8 pine fascia, 1x6 T&G pine soffits, 24” overhangs. Dormers per plan. Dormers have 12” or 24” overhangs.

EXTERIOR TRIM: 2x6 pine window & door casing; round log or 1x8 pine corner trim, log trusses & other accents per plan.

OVERHEAD DOORS: Standard 190 series Overhead Door Co. doors with “Legacy” operators, glass per plan, standard professional installation included.

WINDOWS & PATIO DOORS: Marvin Integrity low E squared, argon filled Cardinal glass w/ unfinished pine interiors (factory pre-finishing available); removable pine grills; GBG (Grills Between the Glass), SDL (Simulated Divided Lights), & multiple grill patterns available as options; tempering by code; obscured glass available; fiberglass Ultrex pultruded exterior; full color-matched screens; factory applied jamb extensions.

ENTRY DOOR SYSTEM: Fiberclassic clear glass with or with out grills, or Smooth Star etched glass. Sidelights & Transoms per plan. Deadbolts & Cambridge Nickel locksets included for all exterior doors.

INTERIOR DOORS & TRIM: all packages include Cambridge Nickel locksets.

Barden Log & Barden Panelized Log Packages: 1x4 pine base & casing, 6 panel pine doors w/ pine jambs.

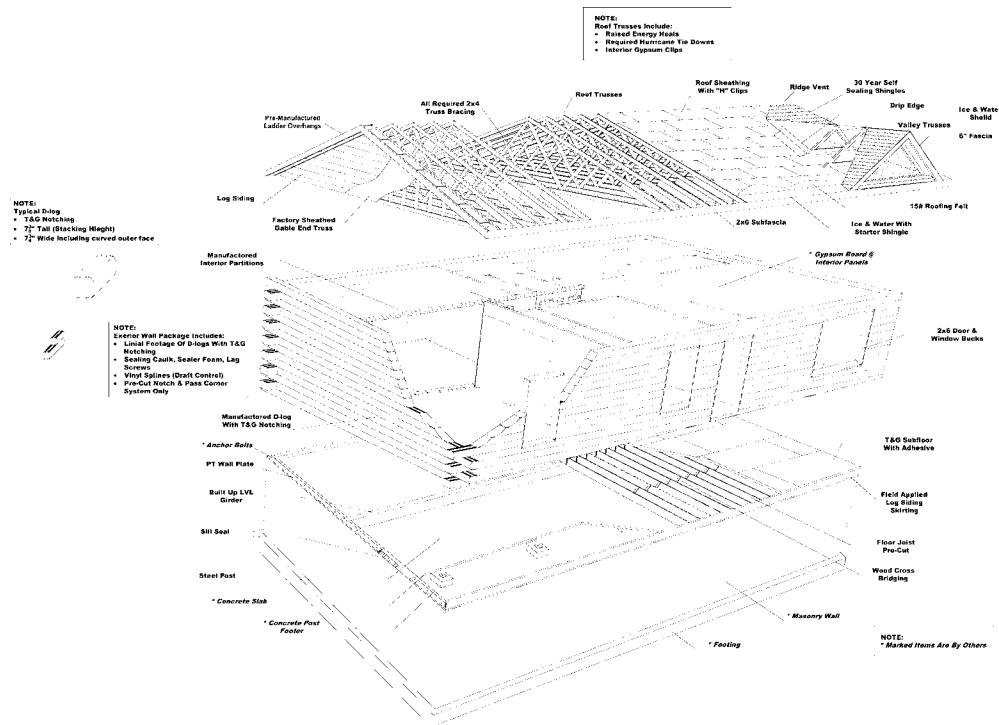
Barden Economy Log Package: Wide MDF (Multiple Density Fiberboard) primed base & casing, 6 panel solid core colonist doors w/ primed jambs.

INTERIOR STAIRS, STAIR RAILINGS & LOFT RAILINGS: Pre-built stain grade SPF (spruce, pine, & fir) stairs for main floors. Basement stairs are KD (knock down) SPF stairs with backers. Pine handrail for basement, square pine upper railings, balusters & newels.

CABINETS, COUNTERTOPS, VANITIES, & VANITY TOPS: all packages include WilsonArt laminate square edge kitchen countertops.

Barden Log & Barden Panelized Log Packages: Bayport Hickory, Harbour Court, Heartland Maple, Heritage Hickory, Heritage Oak, or Laurel Cherry HomeCrest kitchen & vanity cabinets, laminate sides & deluxe wood drawers. Vanity tops are one-piece cultured marble with seamless integrated bowls.

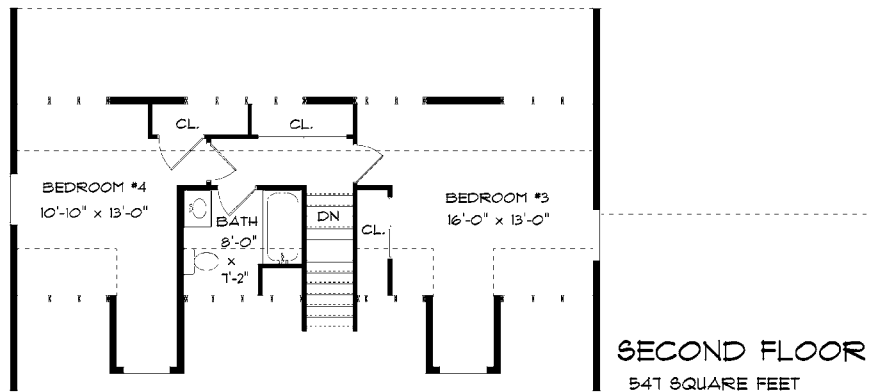
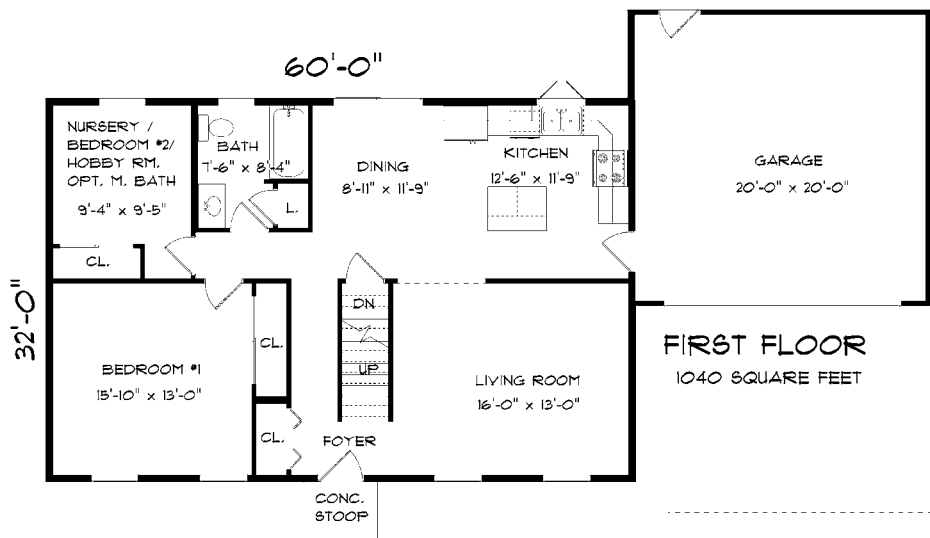
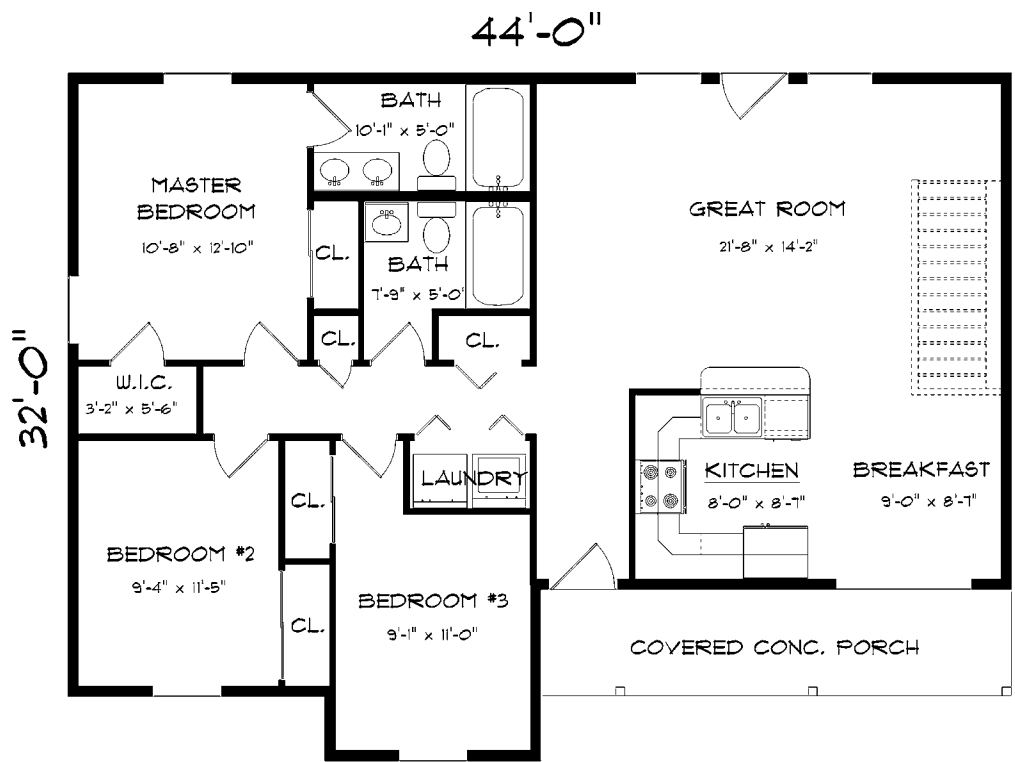
Barden Economy Log Package: Heartland Oak or Sedona Hickory HomeCrest kitchen & vanity cabinets, laminate sides & deluxe wood drawers. Vanity tops are WilsonArt laminate square edge countertops (to be used with drop-in bowls by owner)





Crystal

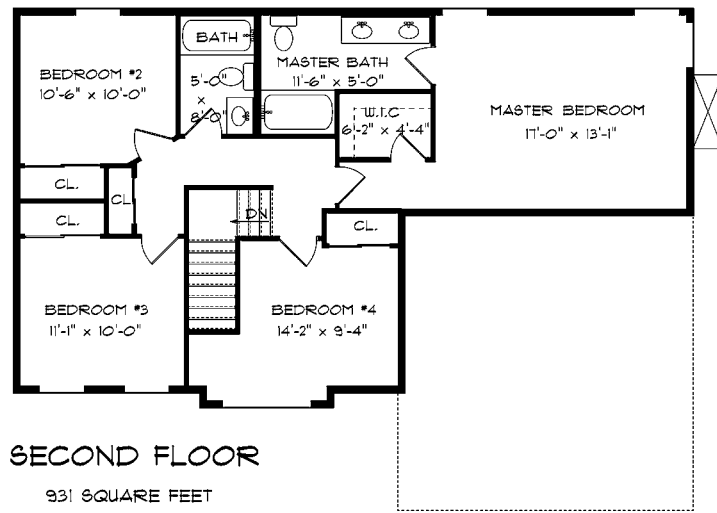
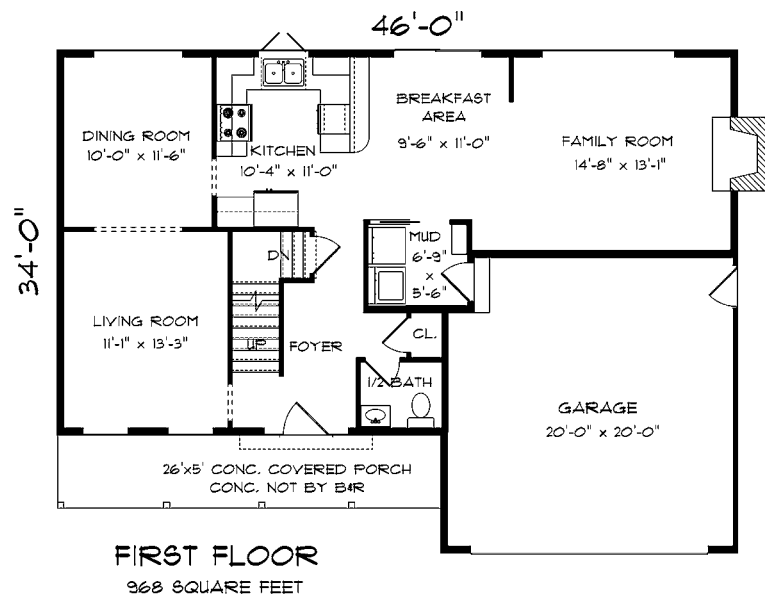
1196 Sq. Ft.



GLASS PANELS IN OHD ARE NOT INCLUDED IN STANDARD PACKAGE.

New Haven

1587 Sq. Ft.



CULTURED STONE AND GLASS PANELS IN OHD ARE NOT INCLUDED IN STANDARD PACKAGE.

Eastfield

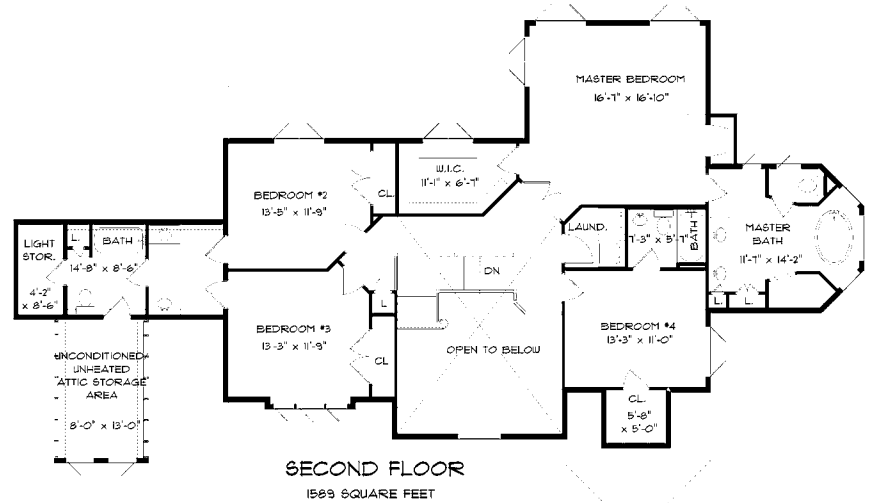
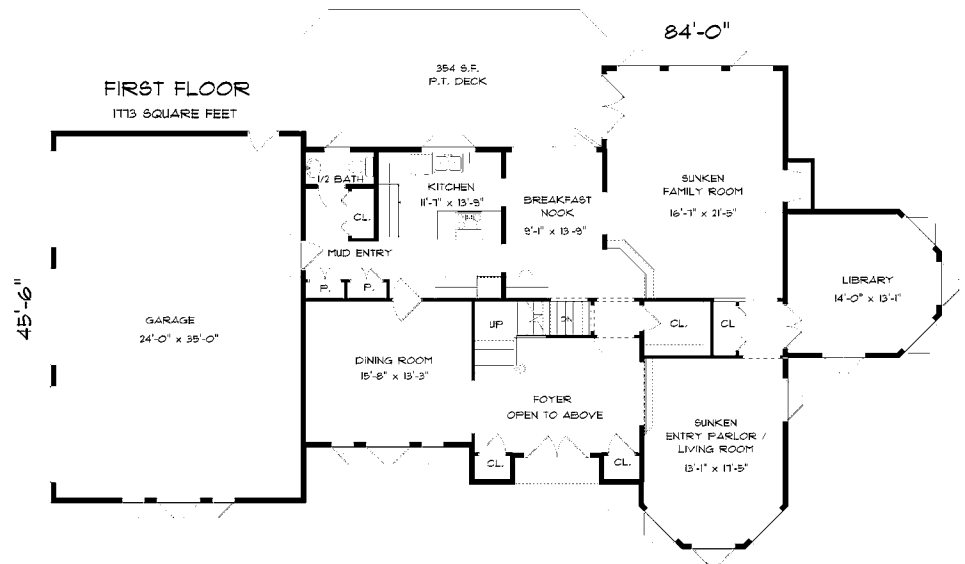
1899 Sq. Ft.



CULTURED STONE NOT INCLUDED IN STANDARD PACKAGE.

New Castle

3362 Sq. Ft.



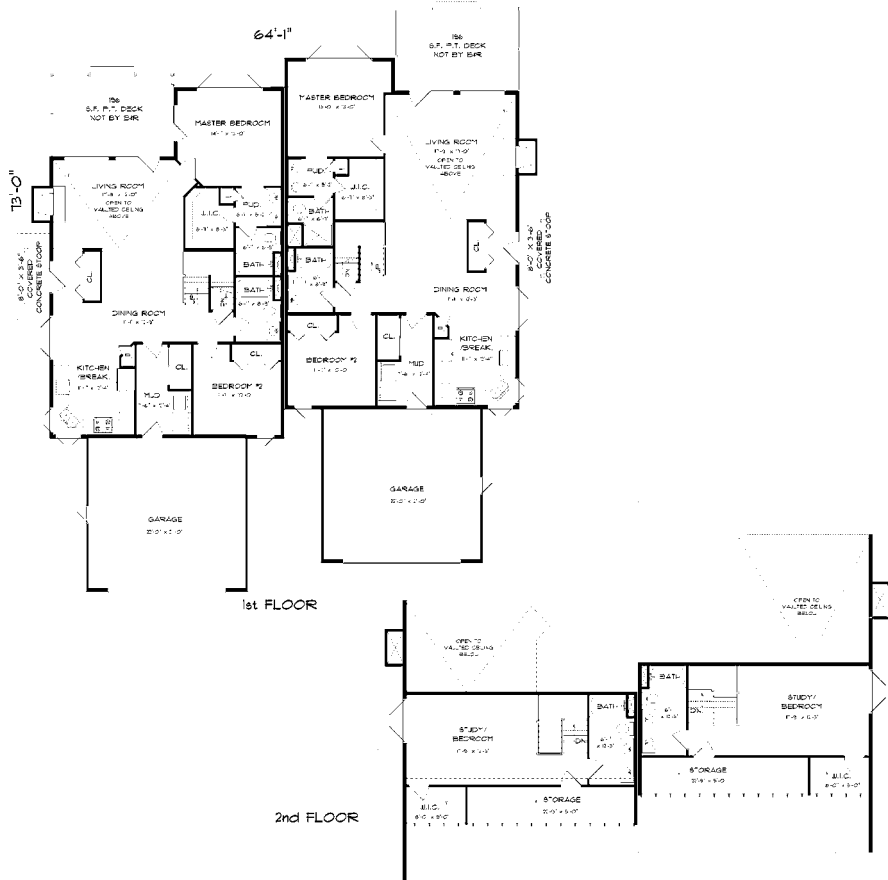


Multi-Family



"As I near the end of the first year in my Barden home, I wanted to send a note of appreciation for the efforts of your fine company and my builder. ... The quality of the material and workmanship was simply excellent. ... And, most importantly, the cost-savings from utilizing Barden's panelized construction were truly significant over the bids that I received from builders offering more conventional on-site construction! I greatly appreciated the way my builder supervised the entire construction process, from excavation to trim. ... I want to thank everyone at Barden Homes and McLachlan Builders whose efforts have resulted in the completion of my "dream home." I can strongly recommend that any person contemplating a new home should consider Barden Homes, particularly one built by McLachlan Builders!"



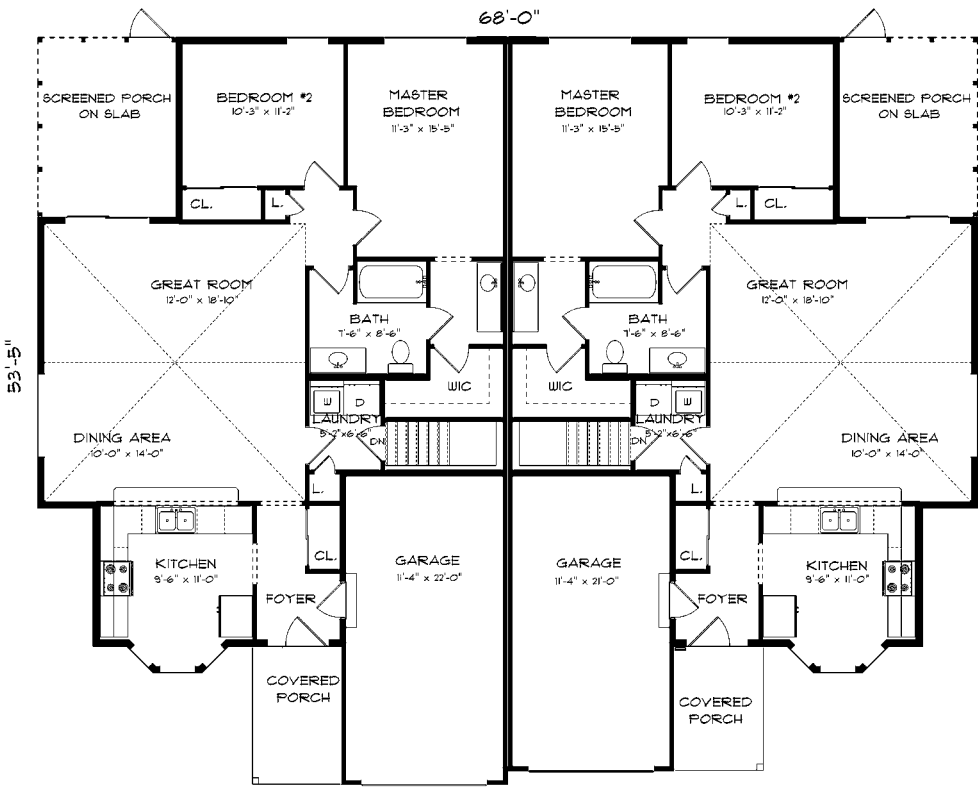


Woodland Villa 3904 Sq. Ft.

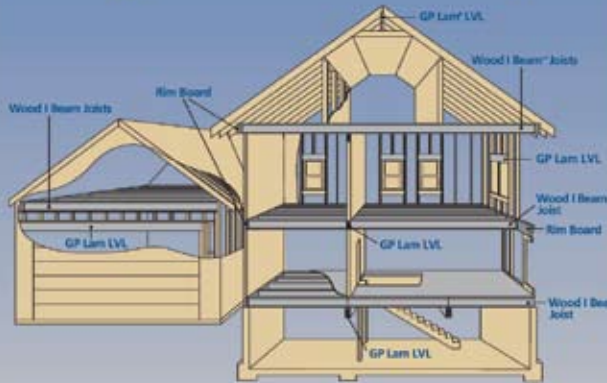


CULTURED STONE AND GLASS PANELS IN OHD ARE NOT INCLUDED IN STANDARD PACKAGE.

Presidential 1191 Sq. Ft. per unit



Engineered for performance



When it comes to floor joists, rimboard, beams and headers, builders and contractors choose GP engineered lumber for many reasons. Georgia-Pacific engineered lumber provides the following benefits:

- More open spaces
- Quieter floors with less vibration
- A flat, level, more stable floor system
- Environmentally responsible
- Lifetime limited warranty*

Distributed Exclusively by




For more information, call 1-888-853-2256 or visit www.bluelinxco.com.

* For terms, conditions and limitations please see manufacturer's warranty. For a copy of the manufacturer's warranty call 1-888-502-BLUE.

WOOD I BEAM and FIBERGUARD are trademarks and the ENGINEERED LUMBER logo, the WOOD I BEAM logo, FIBERSTRONG and GP LAM are registered trademarks of Georgia-Pacific Corporation. GEORGIA-PACIFIC, GP and the GP symbol are trademarks of Georgia-Pacific Corporation. BLUELINK and the BlueLink DESIGN are trademarks of BlueLink Corporation. ©2005 Georgia-Pacific Corporation. All rights reserved. Printed in the U.S.A.

HOLLOW METAL DOORS & FRAMES • WOOD DOORS • FINISHED HARDWARE



Door Specialties Inc.

530 Fillmore Avenue
Tonawanda, NY 14150
Phone 716/895-6155
Fax 716/895-0208

BL & WHOLESALE SUPPLY INC.

Your Roofing, Siding & Window Source
www.blwholesale.com

We are proud of our association with




CertainTeed Landmark Series Shingles
EverNew Railing Systems
www.certainteed.com

MID-AMERICA Siding Components*
www.midamericacomponents.com

CLOSETMAID

"Ask us How to Make Money in the Closet"

800-373-8888



THERMA TRU DOORS



The most preferred brand in the business™

Smart. Sleek. Sophisticated. HomeCrest.

When you want a unique look for a unique space, HomeCrest's choices provide the solution. The latest trends, elegant styles — everything to create a kitchen that reflects your personality.



HomeCrest CABINETRY
A Lifetime of Choices™

Division of MDCI
www.homecrestcabinetry.com

JELD-WEN WINDOWS & DOORS



RELIABILITY for real life®




A Quality Home deserves Quality Windows.

MARVIN Windows and Doors

Made for you.®
www.marvin.com

The world's favorite lock.

Available in a variety of distinctive finishes.



Yale

YH COLLECTION
Better. Aesthetically. 2

design ELEMENTS
Best. Solid Brass.

www.yalecorp.com

The CARL & STU Show



A SHOW POWERED BY A MAN POWERED BY A LOVE OF ECO-FRIENDLY WINDOWS.

In every way possible, Integrity is committed to making the world we live in a greener one. Integrity windows and doors are made from Ultrex, a heavy-duty pultruded fiberglass that's part silica sand and recycled glass content. They last longer than petroleum-based vinyl windows and take 39% less energy to produce than vinyl, helping to reduce the strain on our already overworked natural resources.

Watch Carl & Stu demonstrate the greenness of Integrity windows and doors and get an entire season of new videos at INTEGRITYWINDOWS.COM/SHOW

Integrity
Windows and Doors
Built to Perform

Because no one ever wished they'd spent more time painting their house.



James Hardie ColorPlus Technology

One Company. One focus.

Providing quality products, outstanding service, innovative ideas, competitive prices and superior value.

MOULDING & MILLWORK




CertainTeed
LANDMARK™ SERIES
Premium Shingles
www.certainteed.com

BL & WHOLESALE SUPPLY INC.
Your Roofing, Siding, Window & Commercial Source
www.blwholesale.com

Build in Some Quality Time


If you love classic beauty but you'd rather be doing things other than maintenance . . .

Choose Alside premium vinyl siding and exterior products for your new home. Premium vinyl cleans easily, never needs painting, and is made to last for years to come.

Visit our website at www.alside.com to learn more about our virtually maintenance-free premium vinyl siding and window products.



Alside
First On America's Homes



The Renaissance Collection™

Custom Steel Garage Doors

- The look of wood "carriage house" doors
- The long-lasting value of steel

Look for the Ribbon.
Your guarantee of genuine quality and service

The Genuine. The Original.

OVERHEAD DOOR

1-800-929-DOOR
www.OverheadDoor.com



HB&G

HB&G offers an entire line of products that work together, can be installed in 1/3 the time and save considerable money on maintenance. Add to that one of the best warranties in the business and you've got a product unlike any other in the market.



Simonton windows and patio doors feature sturdy, fusion-welded profiles for remarkable strength and are made of premium vinyl that will never pit, peel or fade.

SIMONTON
WINDOWS

A Well-Connected Home™

Simpson Strong-Tie structural connectors help make your home stronger and safer. See www.strongtie.com/safestronghome for more information.

SIMPSON Strong-Tie | 800-999-5099
www.strongtie.com





barden
Building Systems

The Barden & Robeson Corporation

103 Kelly Ave.
P.O. Box 310
Middleport, NY 14105

Ph: 800-945-9400
716-724-0141
Fx: 716-735-3752

www.bardenhomes.com

