



A PLACE TO CALL HOME.





THE BARDEN FAMILY DIFFERENCE.

As a fourth generation, family owned and operated business, the Barden and Robeson Corporation has always believed in fulfilling the dreams that help America grow. We make sure every service we offer is designed to answer your needs, and that you receive the attention and assistance you deserve. Our family is here to help yours make an investment of a lifetime—your dream home.

BETTER. FASTER. SMARTER.

Barden Homes is a vibrant, competitive business. Everything we do focuses on quality workmanship, responsiveness to our customers and integrity in our practices. We send a signal that is positive and optimistic while cultivating hard work with excitement. Opportunities for growth will be unlimited when we hold true to these habits.

The housing industry will continue to undergo significant change. We embrace change and look for the opportunities that it creates as we continue to be the leaders and trendsetters in the marketplace.

Investment in technology and people will continue, building upon a long family tradition.

We strive to be progressive and innovative in our thinking. We build partnerships and alliances that will be the foundation for all future success.

We are known for our integrity and intensity. We seek challenges that test our abilities in order to have the opportunity to be successful. No project will be beyond our reach.

When we make a mistake, we will quickly be accountable and honest. No one that works hard will be without mistakes; learning from them will be part of our growth. We will always look forward and not backwards, for little success ever comes without risk.

Success is our goal, but it will be the result of our efforts.



barden

Better. Faster. Smarter.

HOMES • COMMERCIAL • CHURCHES

Barden's 8-Step process will get you into your new home faster.



1

Call Barden Homes 1-800-945-9400 to ask questions or to make an appointment with your local dealer.



2

Meet with your dealer to review your needs and develop plans for your custom home.



3

Develop, finalize and approve your plans.



4

Your home begins construction at your local Barden Homes manufacturing facility.



5

Separately timed shipments are delivered to your building site where your installers begin to place the walls and trusses into position.



6

Your home is taking shape.



7

Quickly enclosed, the house is protected from weather and theft.



8

Your custom home is ready for you and your family.

SQUARE FOOTAGE INDEX

 1160 to 1834

Davis Bay5
 Patricia6
 Odessa II7
 Maren’s Gate8
 Slade Harbor9
 Wellington II10
 Wellington III11
 Tiffany II12
 Gabe’s Brook13
 New Haven II14
 Tomko’s Terrace15
 Bridgeport16
 Hickory Park17
 Elizabeth18
 Edmond’s Point19
 Jordyn20
 Cumberland21
 Darcee22


Specifications60

Suppliers62

 1857 to 2295

Shamrock23
 Willcox24
 DiPalma Grove25
 Ethan Allen I26
 Autumnview27
 Bachorski Manor28
 Oxford29
 Baron Estates30
 Ethan Allen III31
 Beck’s Place32
 Alyce33
 Ethan Allen IV34
 Hannah35
 Olson’s Inn36
 Ethan Allen II37
 Hartford38
 Tierney’s Treasure39
 Harris Hideaway40

Photography may not necessarily represent standard design, pricing or specifications.

 2335 to 5389

Hollys Haven41
 Smythe Orchard42
 Chamber Acres43
 Sharon’s Way44
 Martha’s Place45
 Nichols Landing46
 Hollister Cove47
 Sullivans Run48
 Tami’s Inn49
 Derek’s Trail50
 White Lane51
 Whitaker Corners52
 Edward’s Court53
 Russell Retreat54
 Harrington Hills55
 Mollys Manor56
 Carols Dream57
 Albert Cottage58

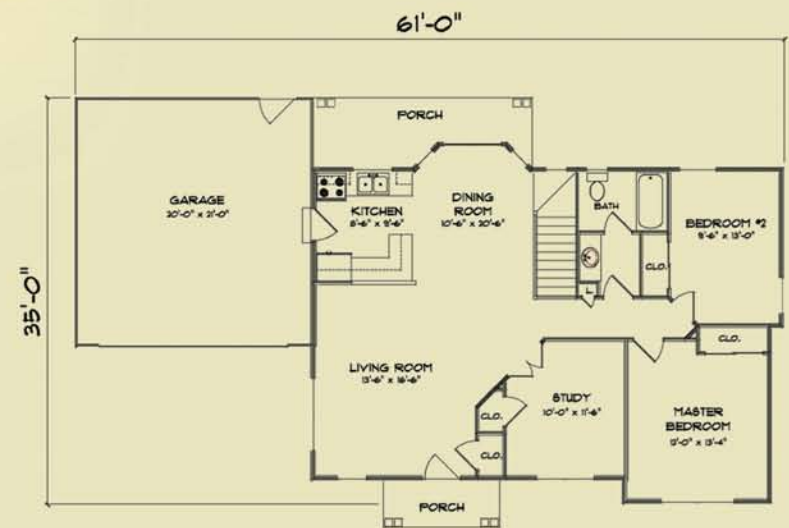
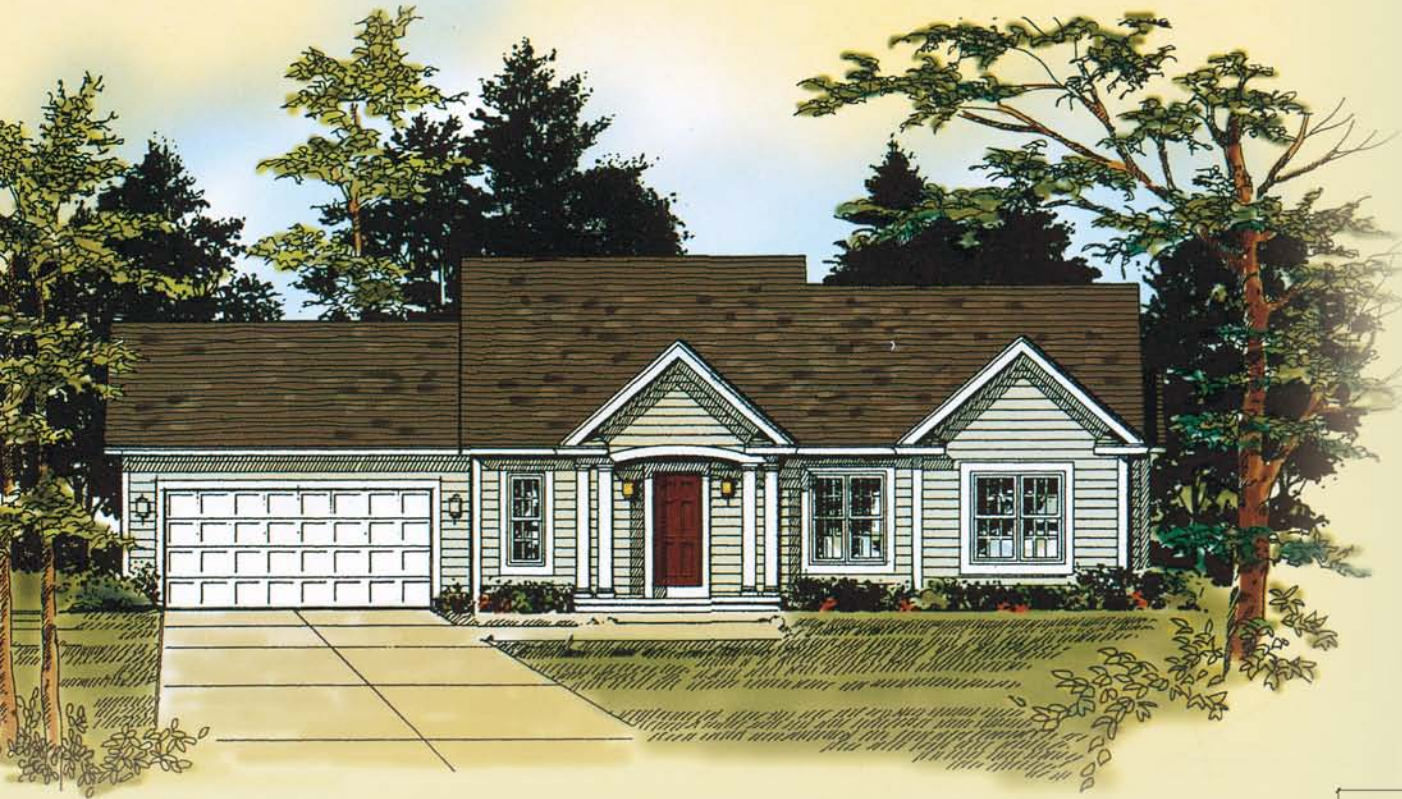


barden

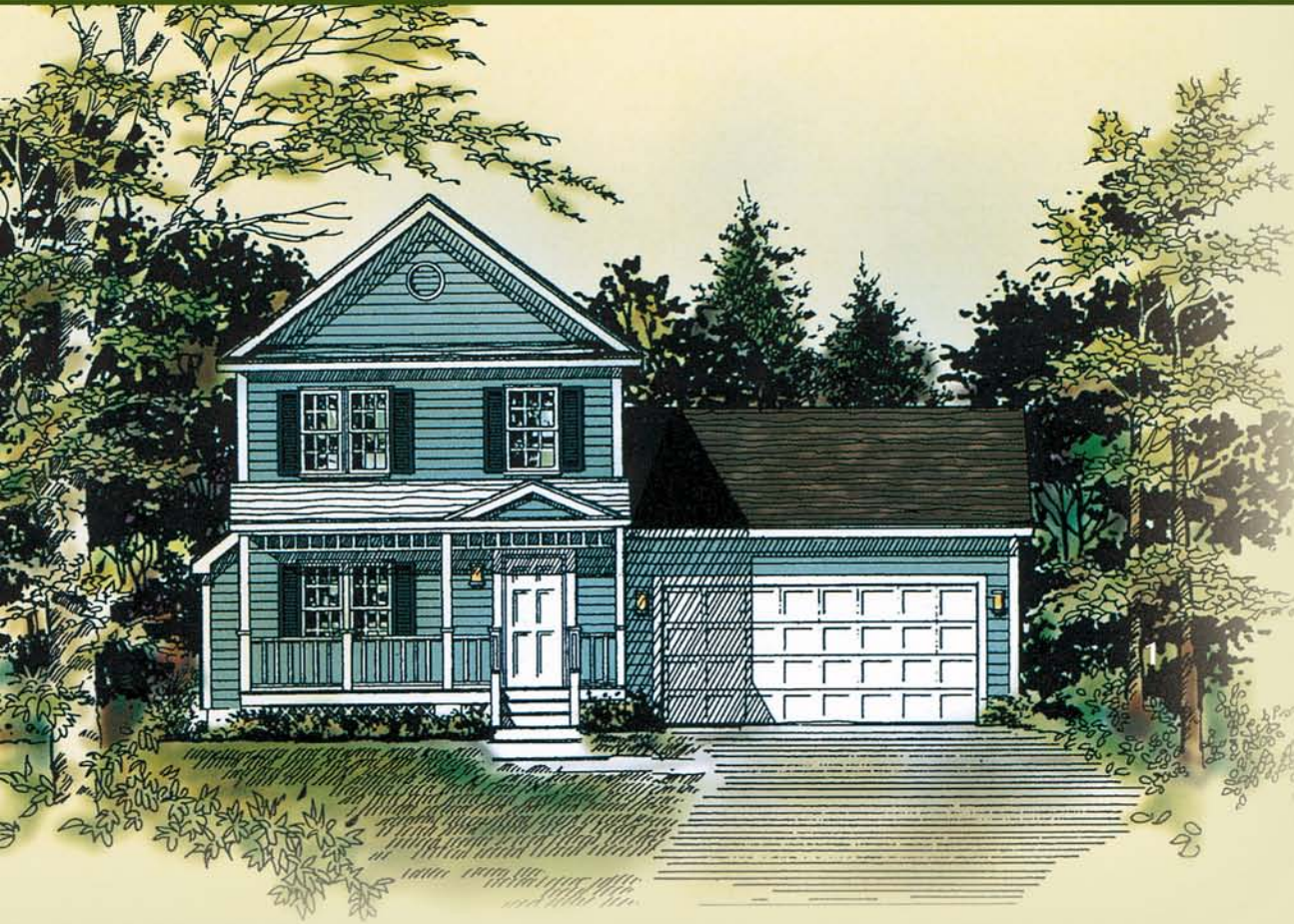
Better. Faster. Smarter.

DAVIS BAY

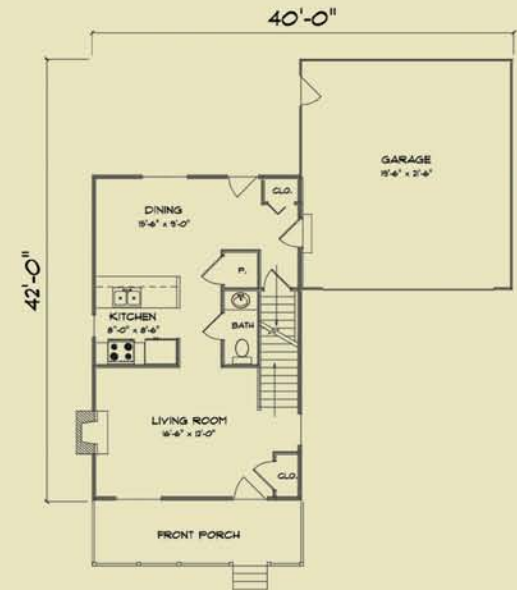
1160 SQUARE FEET



PATRICIA



1240 SQUARE FEET



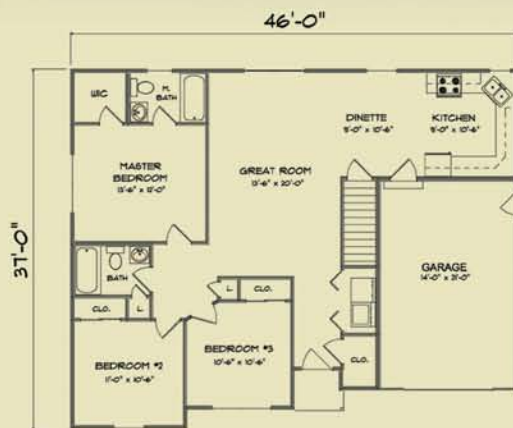
FIRST FLOOR
620 SQUARE FEET



SECOND FLOOR
620 SQUARE FEET

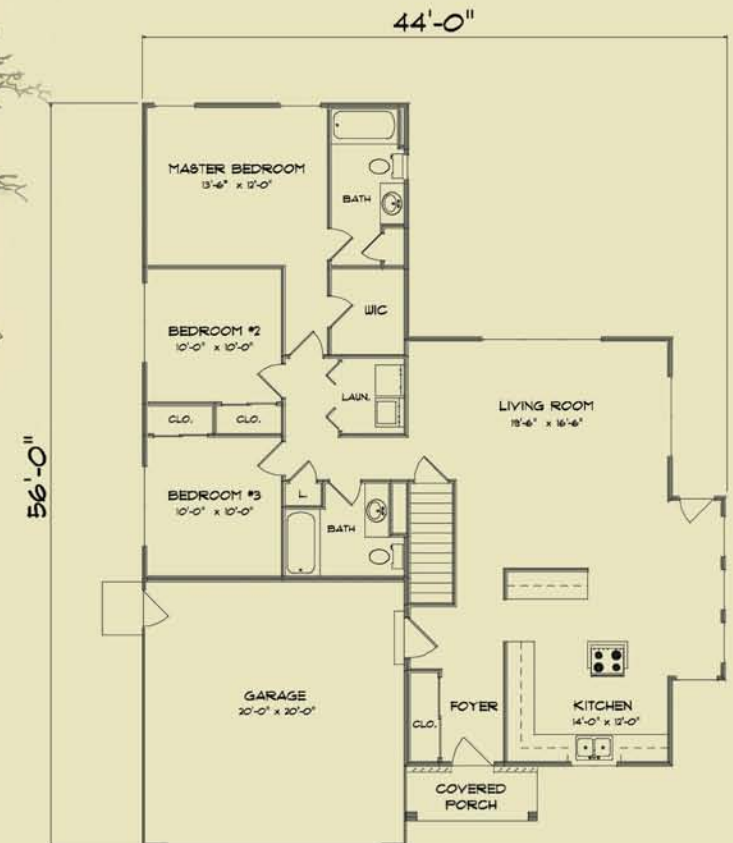
ODESSA II

1278 SQUARE FEET



MAREN'S GATE

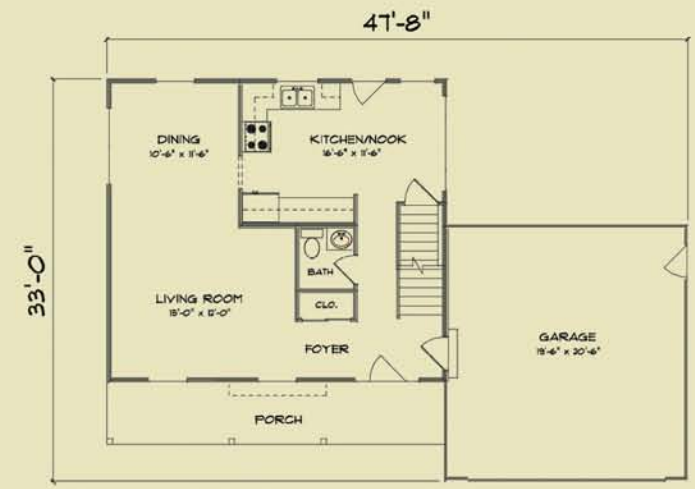
1392 SQUARE FEET



SLADE HARBOR



1408 SQUARE FEET



FIRST FLOOR
700 SQUARE FEET



SECOND FLOOR
708 SQUARE FEET

WELLINGTON II

1496 SQUARE FEET



FIRST FLOOR
148 SQUARE FEET



SECOND FLOOR
148 SQUARE FEET



WELLINGTON III

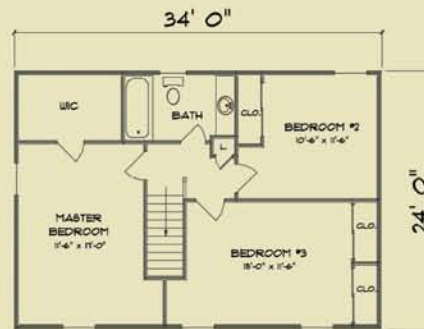


1496 SQUARE FEET

The Wellington III is a variation of the Wellington II, left, which features a covered porch, alternate window arrangement and turned gable over the garage door.



FIRST FLOOR
748 SQUARE FEET



SECOND FLOOR
748 SQUARE FEET

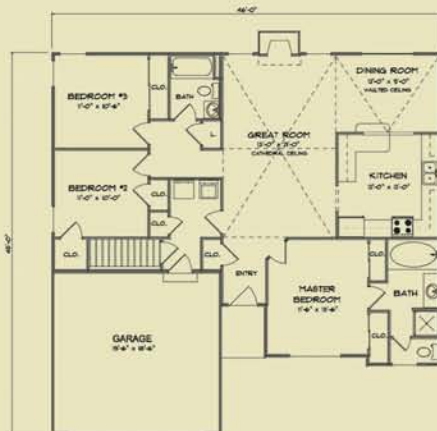


TIFFANY II

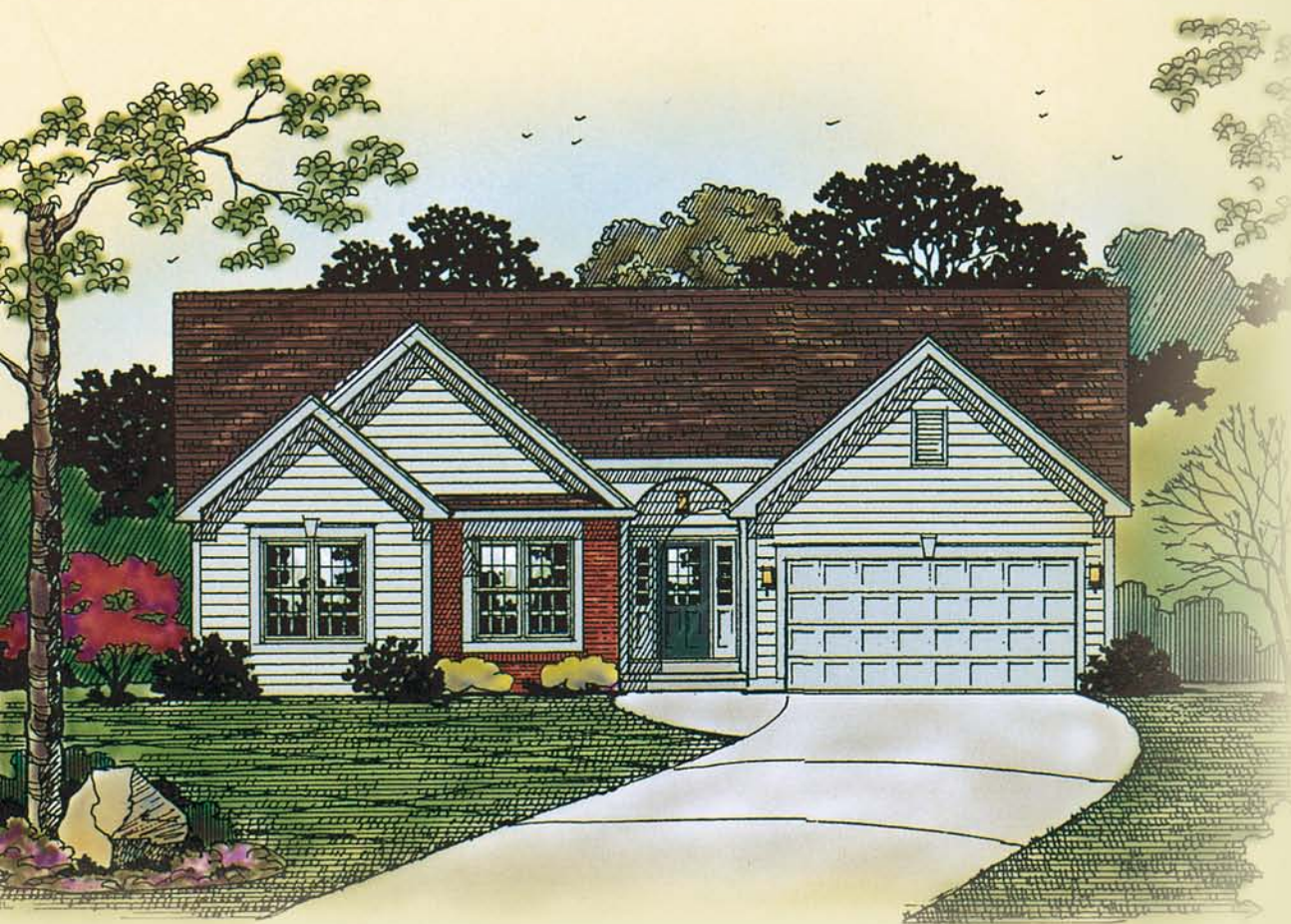


1507 SQUARE FEET

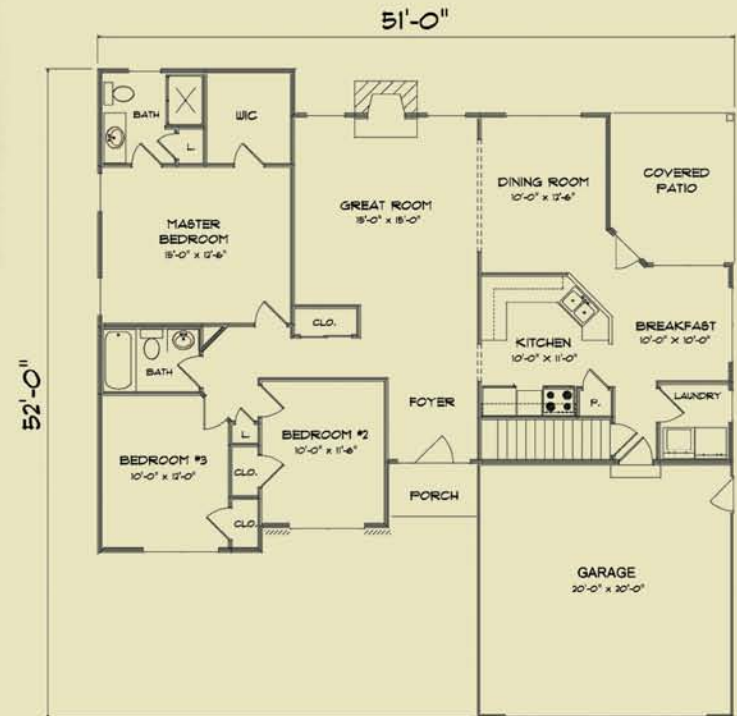
Please note that the screened door on the garage shown to the left is not a standard Barden Homes feature, but was added by the owner.



GABE'S BROOK



1535 SQUARE FEET



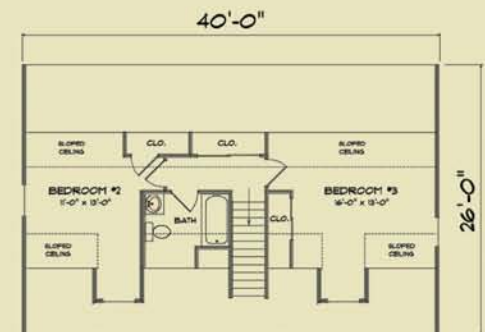
NEW HAVEN II



1600 SQUARE FEET



FIRST FLOOR
1040 SQUARE FEET

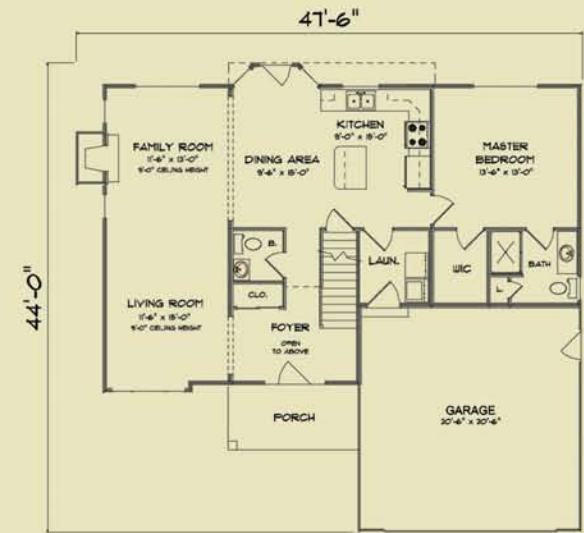


SECOND FLOOR
560 SQUARE FEET

TOMKO'S TERRACE



1635 SQUARE FEET



FIRST FLOOR
1121 SQUARE FEET

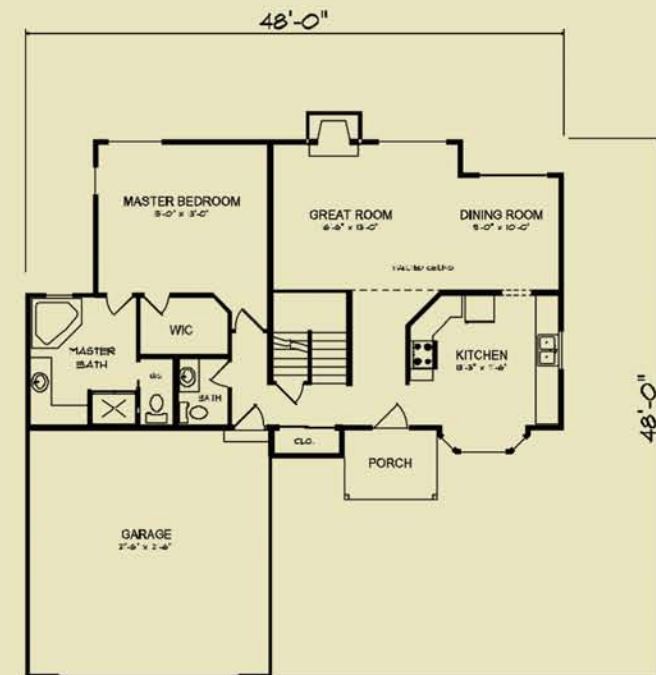


SECOND FLOOR
514 SQUARE FEET

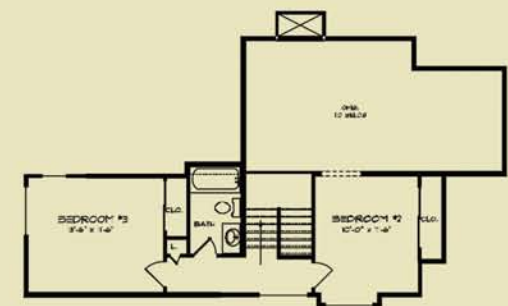
BRIDGEPORT



1666 SQUARE FEET



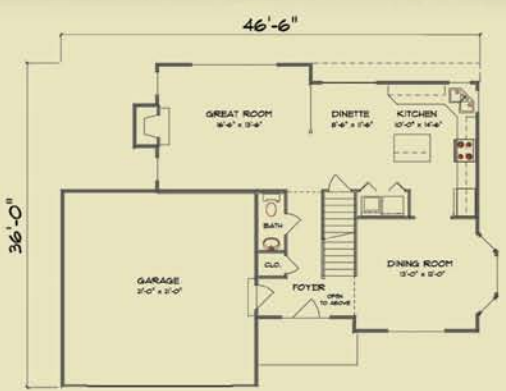
FIRST FLOOR
1152 SQUARE FEET



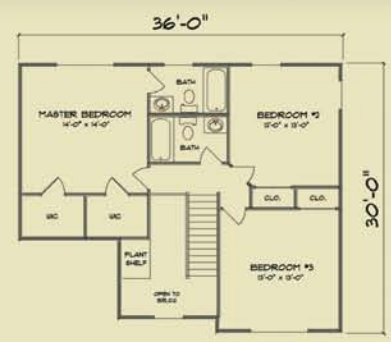
SECOND FLOOR
514 SQUARE FEET

HICKORY PARK

1686 SQUARE FEET



FIRST FLOOR
851 SQUARE FEET



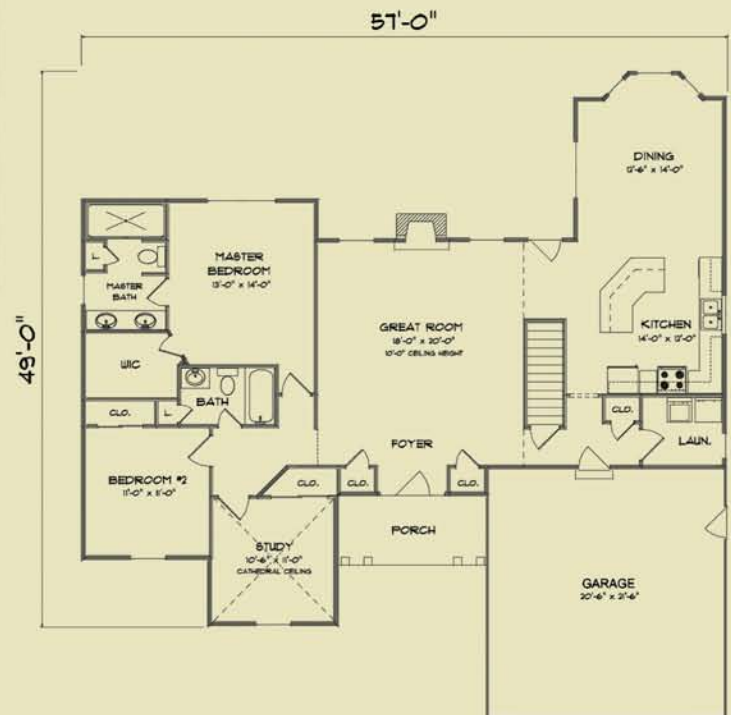
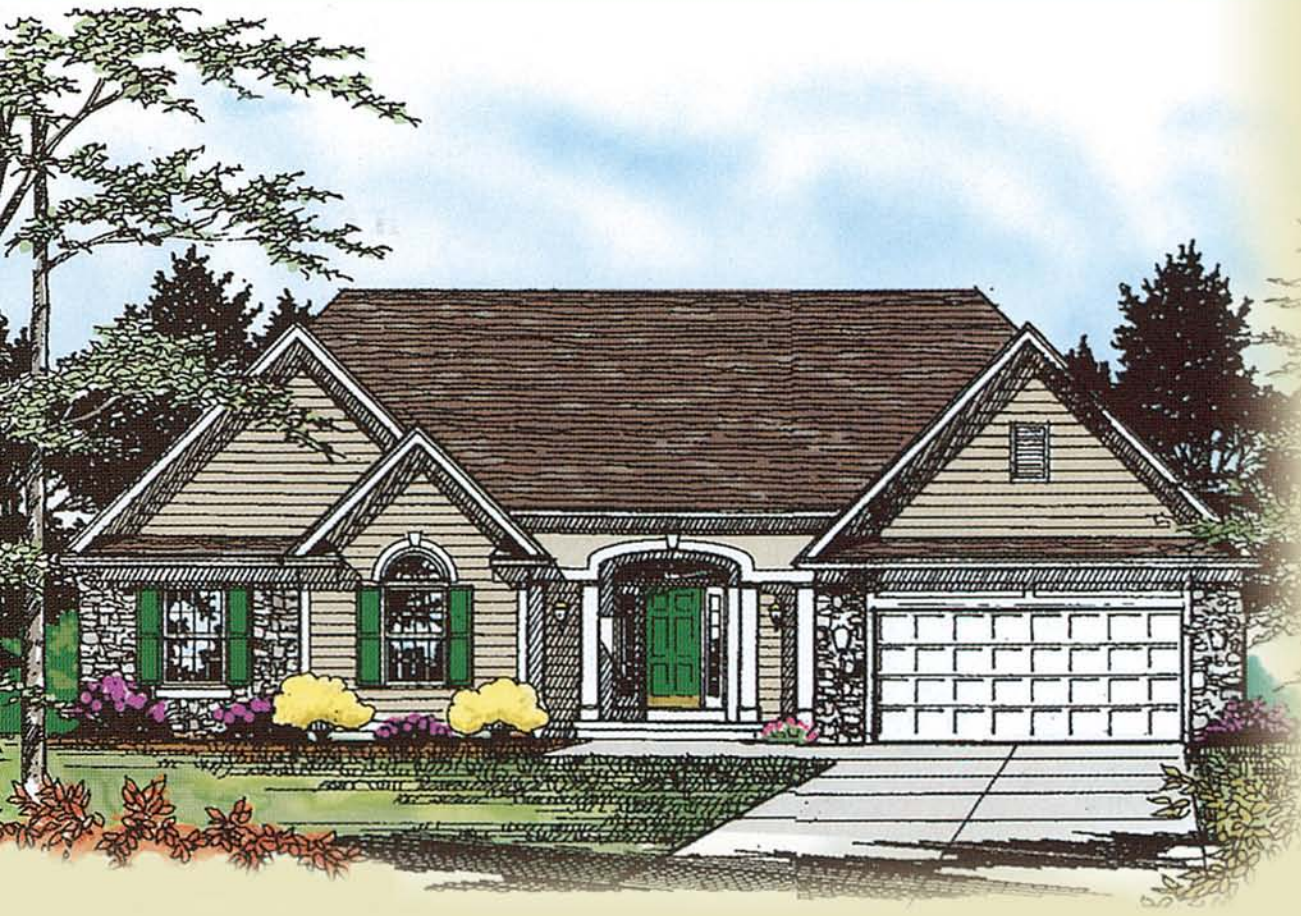
SECOND FLOOR
835 SQUARE FEET



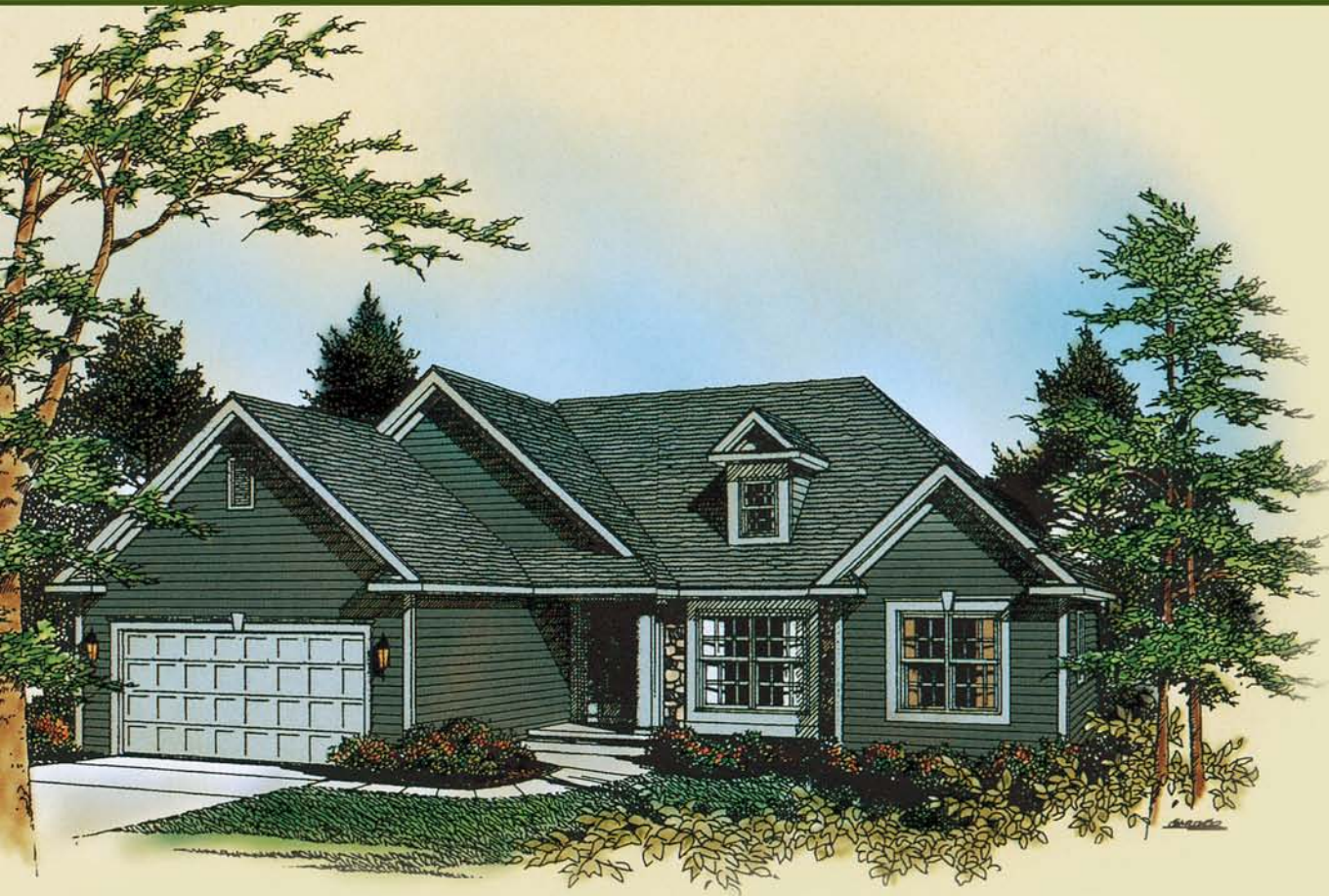
1-800-945-9400

ELIZABETH

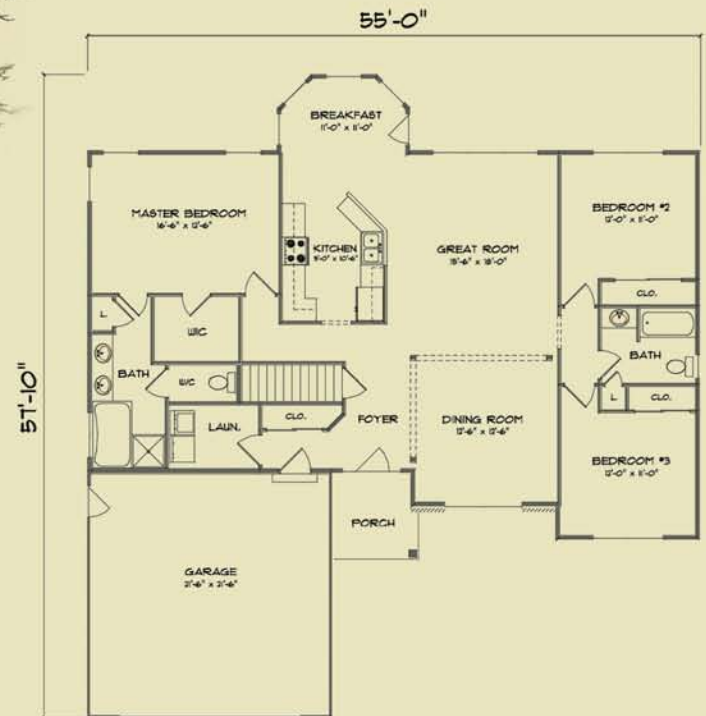
1732 SQUARE FEET



EDMOND'S POINT



1741 SQUARE FEET



CUMBERLAND



1832 SQUARE FEET

