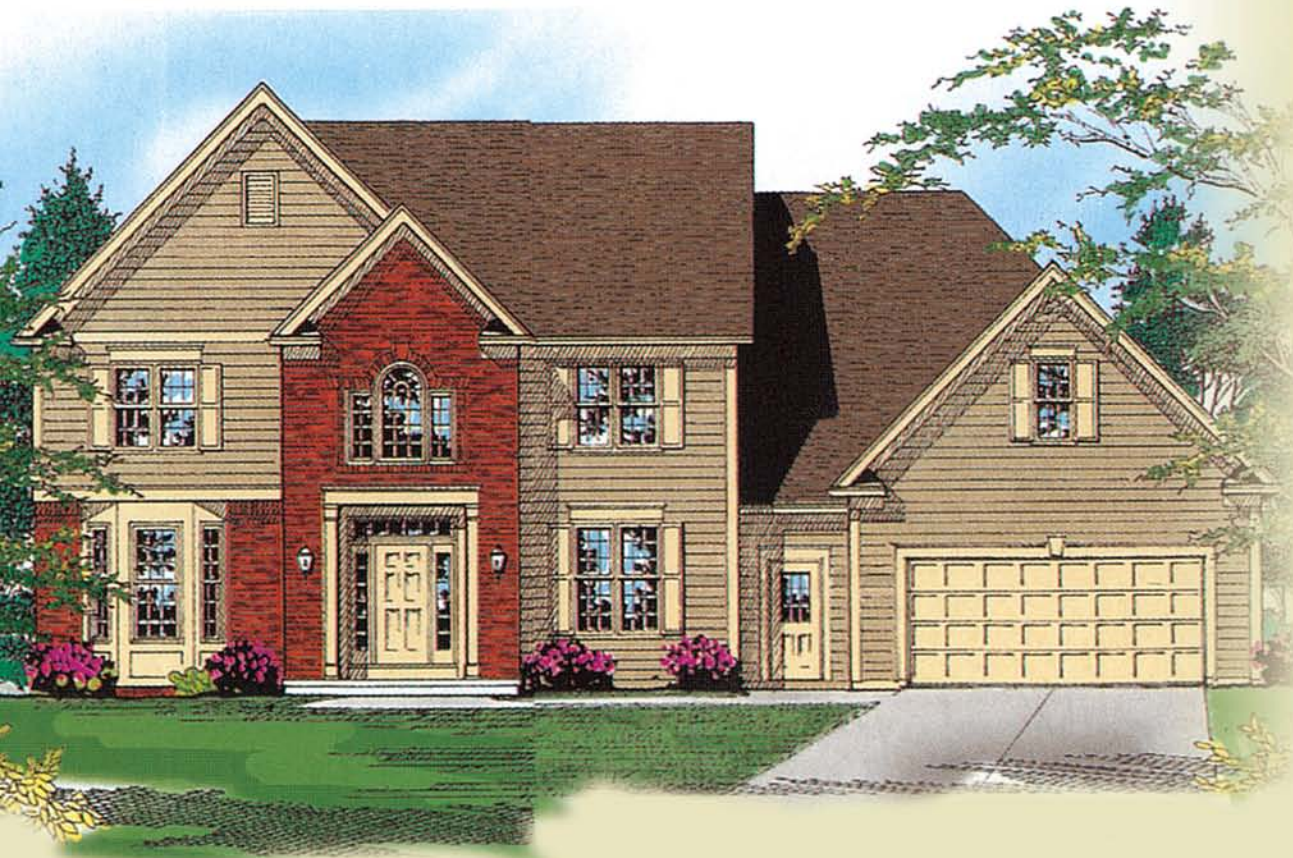
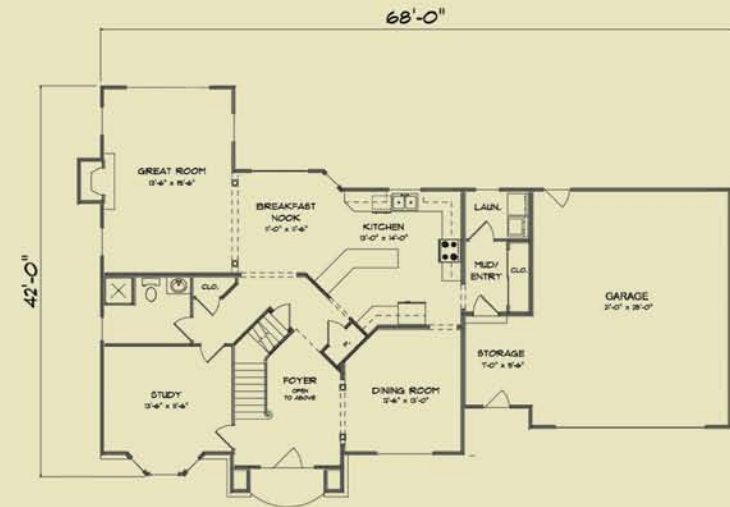


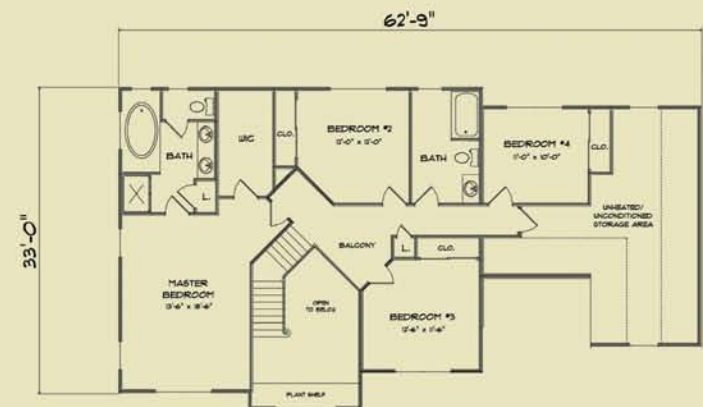
MARTHA'S PLACE



2737 SQUARE FEET



FIRST FLOOR
1413 SQUARE FEET

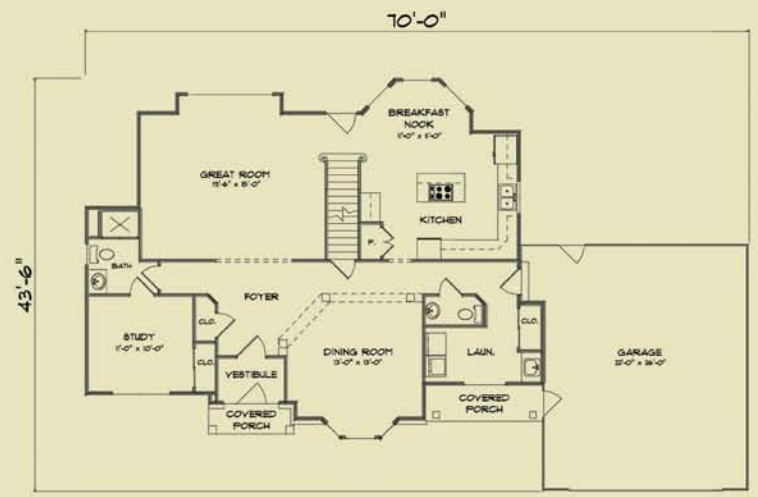


SECOND FLOOR
1324 SQUARE FEET

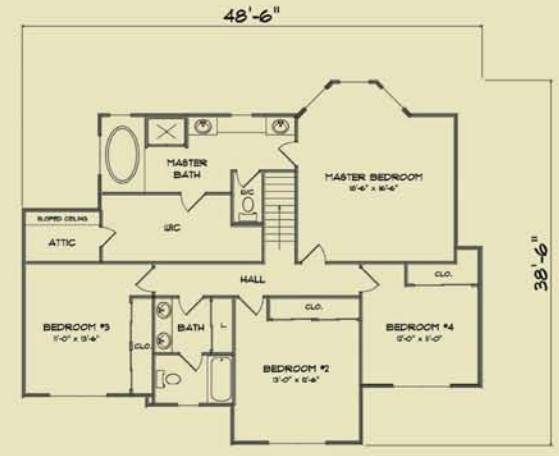
NICHOLS LANDING



2917 SQUARE FEET



FIRST FLOOR
1441 SQUARE FEET

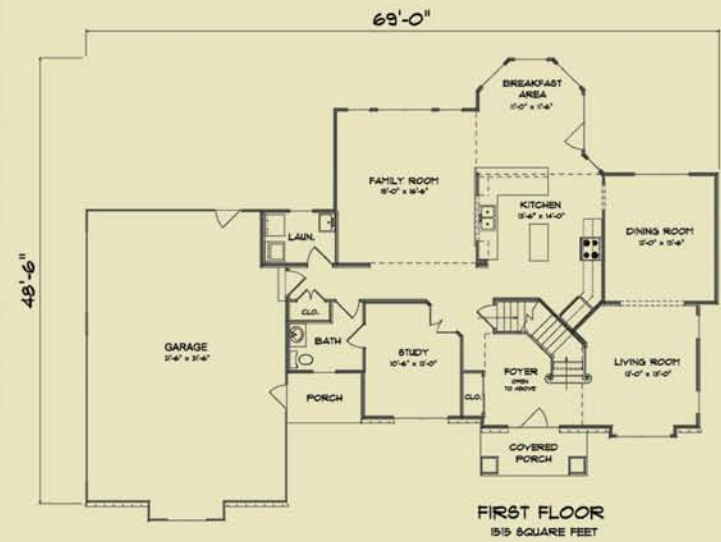


SECOND FLOOR
1476 SQUARE FEET

HOLLISTER COVE



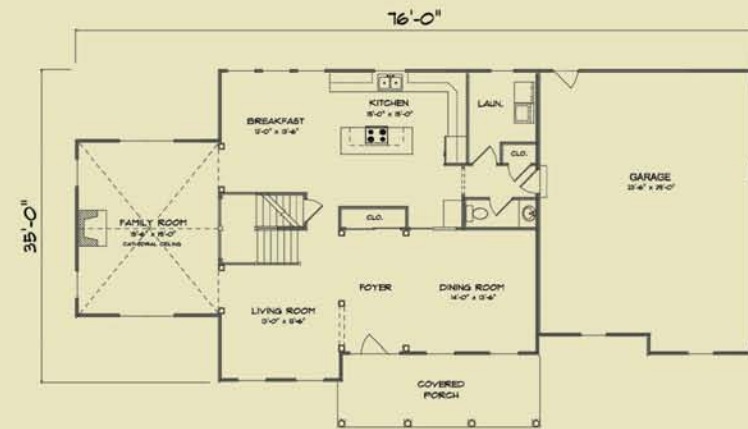
2928 SQUARE FEET



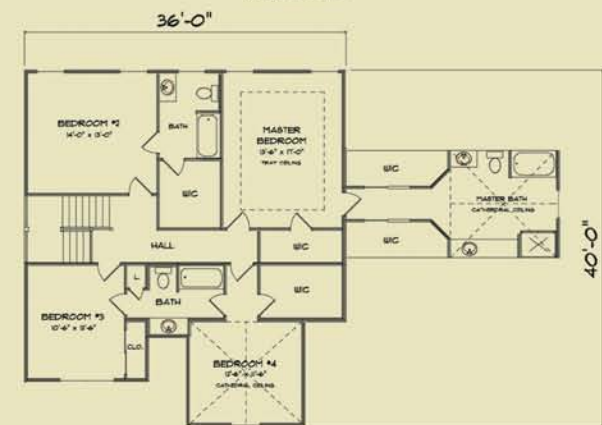
SULLIVANS RUN



3048 SQUARE FEET



FIRST FLOOR
1514 SQUARE FEET

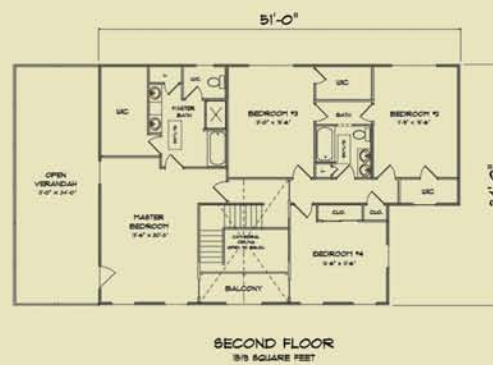
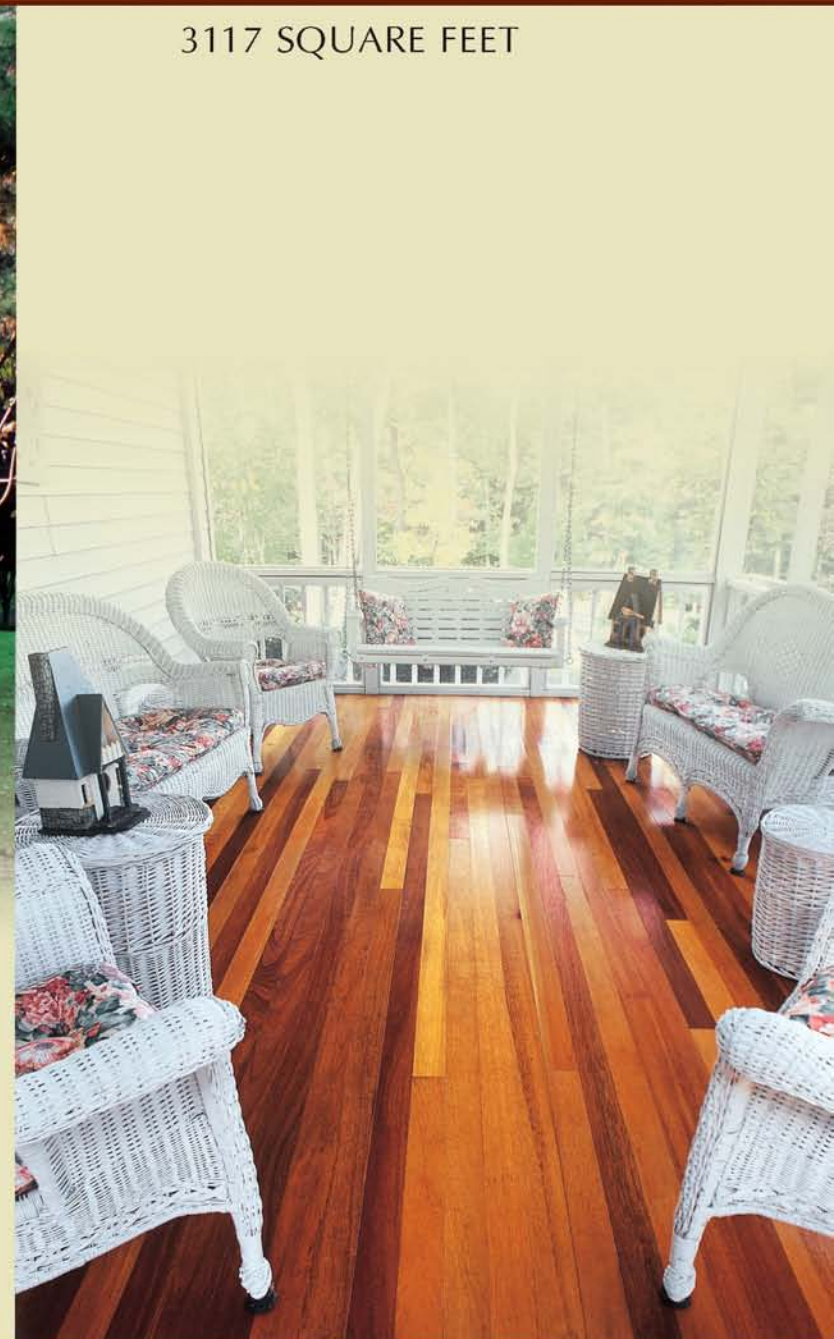


SECOND FLOOR
1534 SQUARE FEET

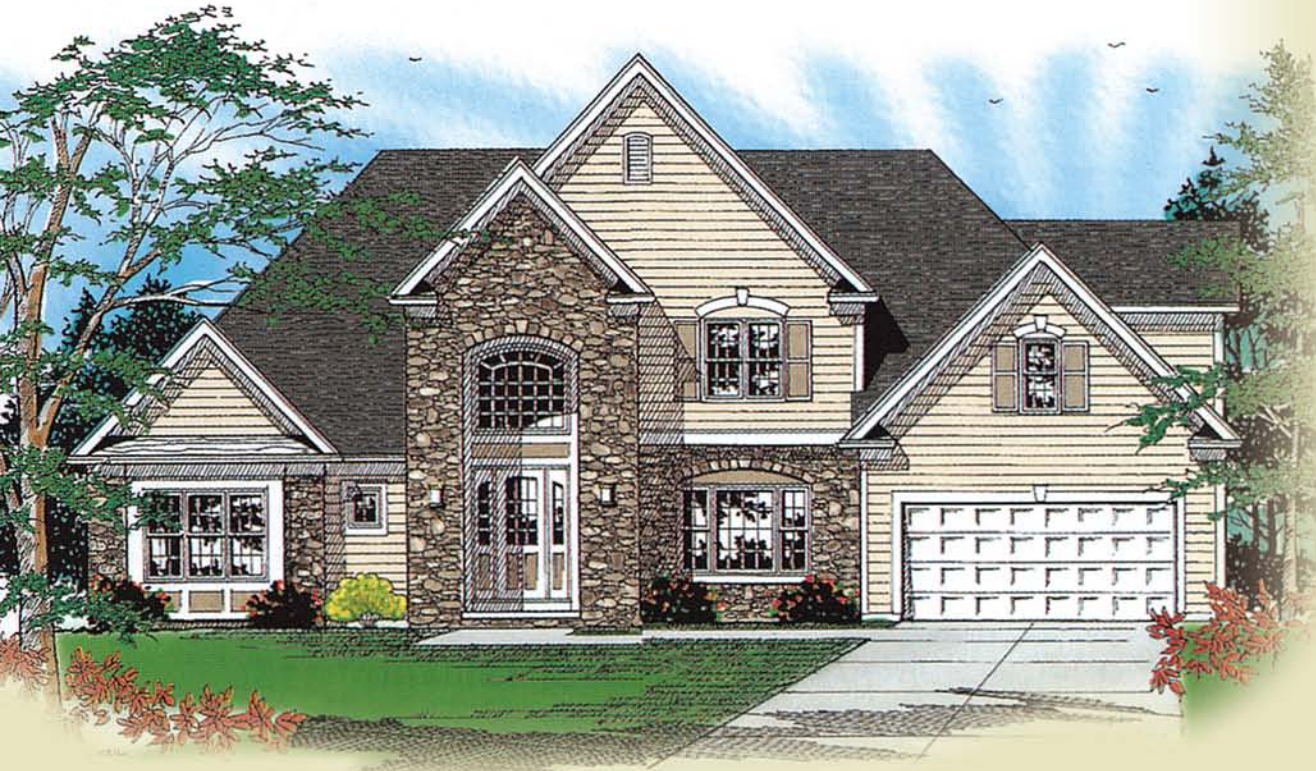
TAMI'S INN



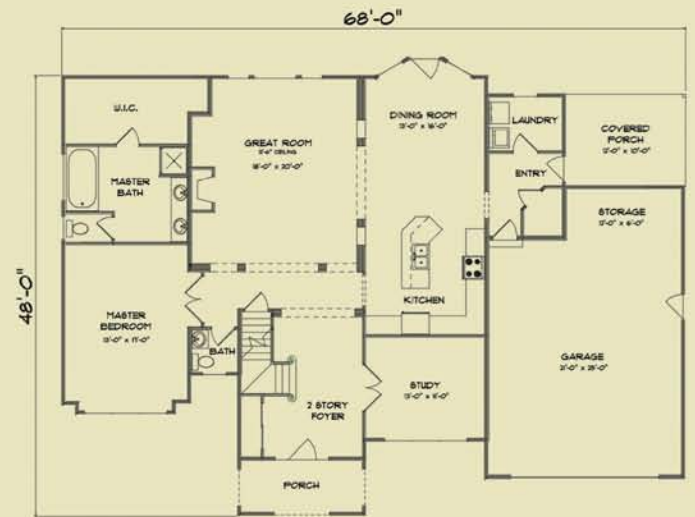
3117 SQUARE FEET



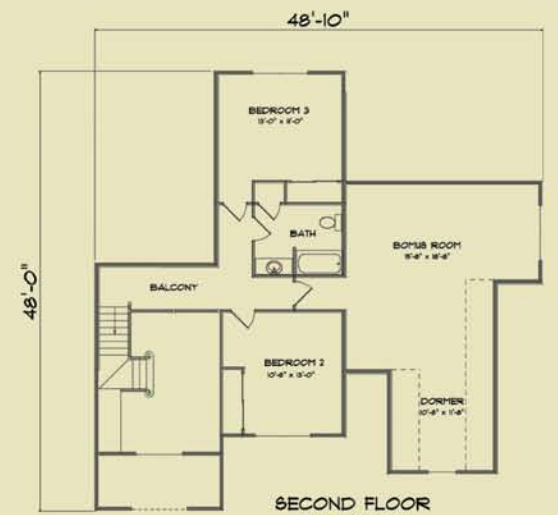
DEREK'S TRAIL



3139 SQUARE FEET



FIRST FLOOR
1561 SQUARE FEET



SECOND FLOOR
1178 SQUARE FEET

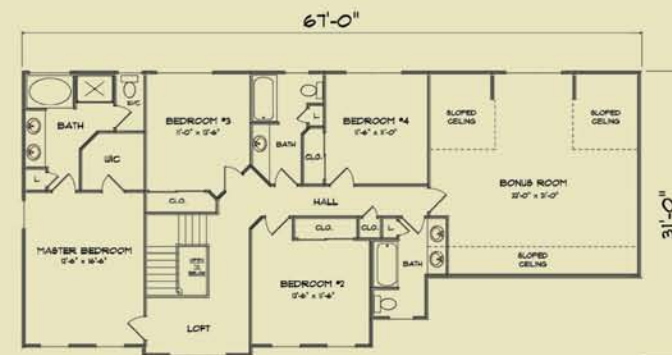
WHITE LANE



3328 SQUARE FEET



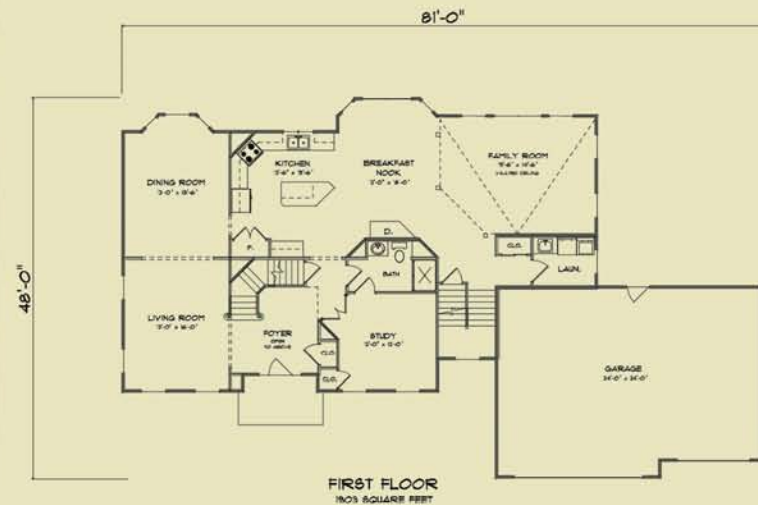
FIRST FLOOR
1580 SQUARE FEET



SECOND FLOOR
1766 SQUARE FEET

WHITAKER CORNERS

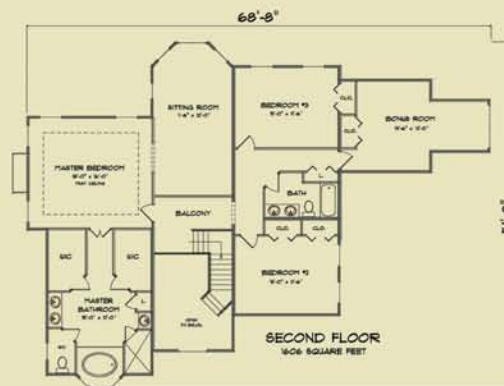
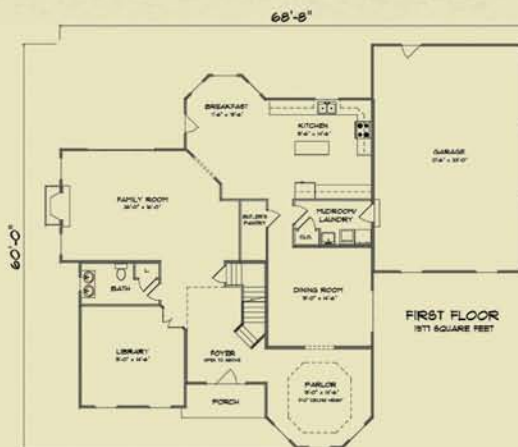
3408 SQUARE FEET



EDWARD'S COURT



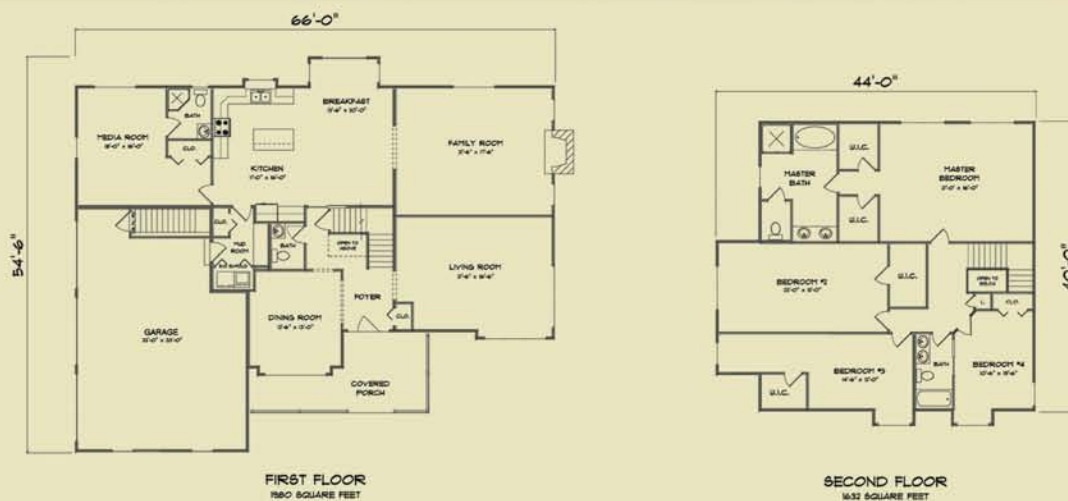
3583 SQUARE FEET



RUSSELL RETREAT



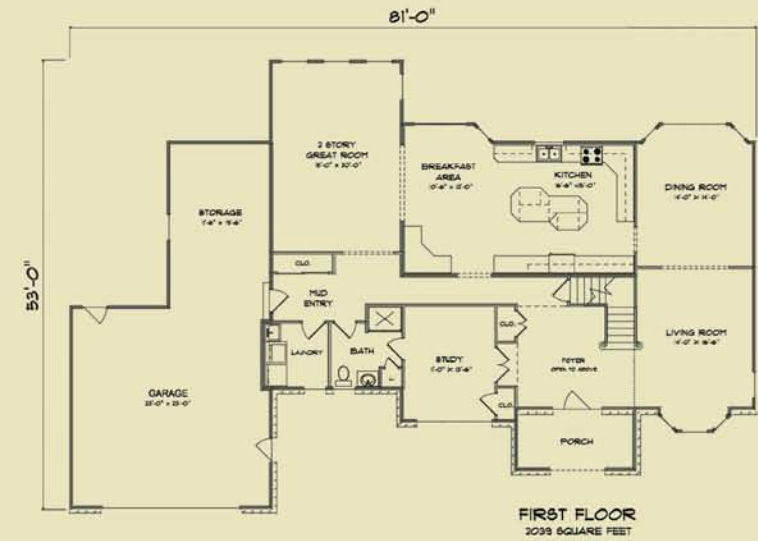
3612 SQUARE FEET



HARRINGTON HILLS

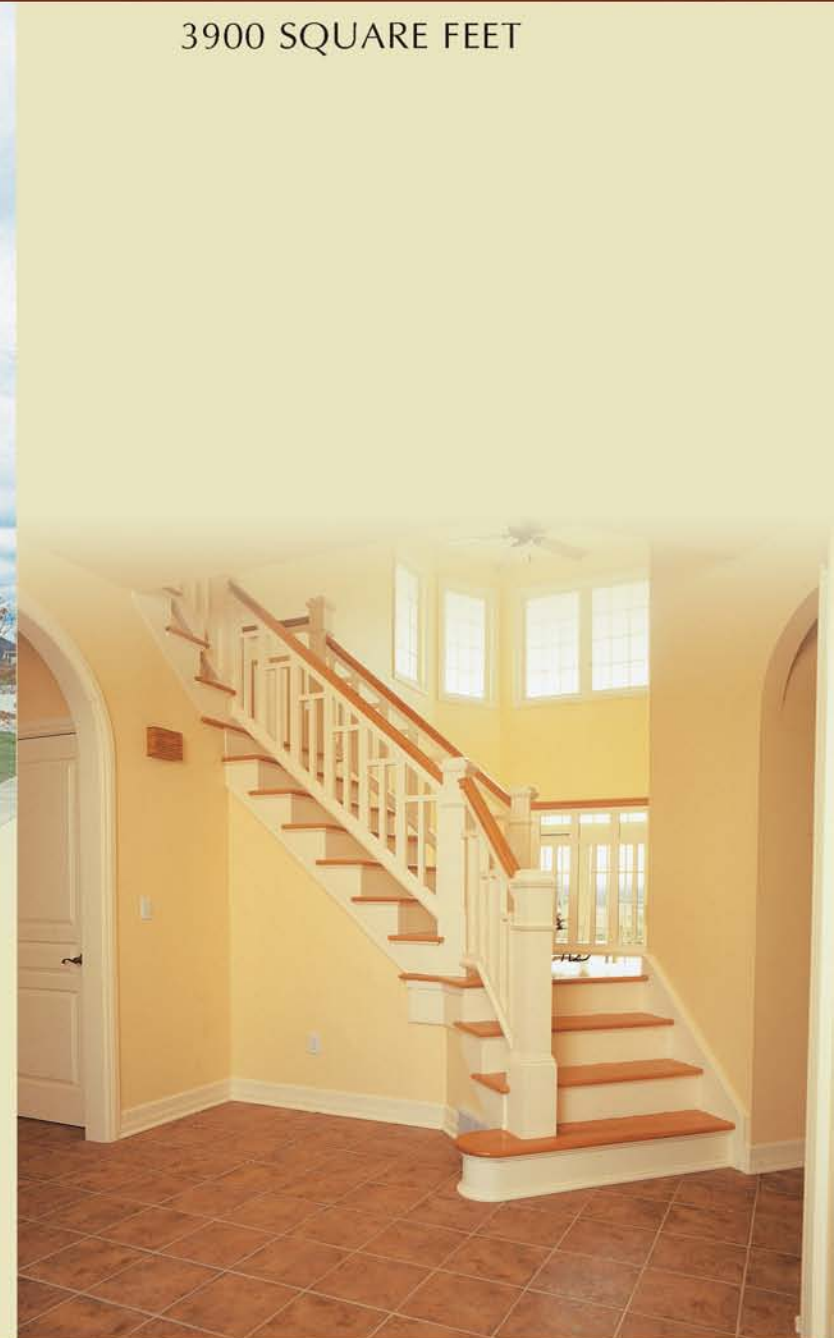


3687 SQUARE FEET



MOLLYS MANOR

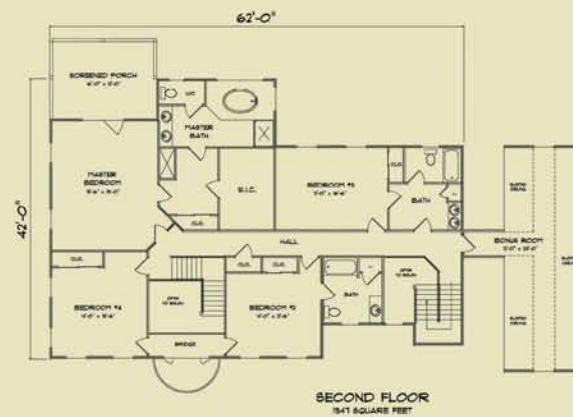
3900 SQUARE FEET



CAROLS DREAM

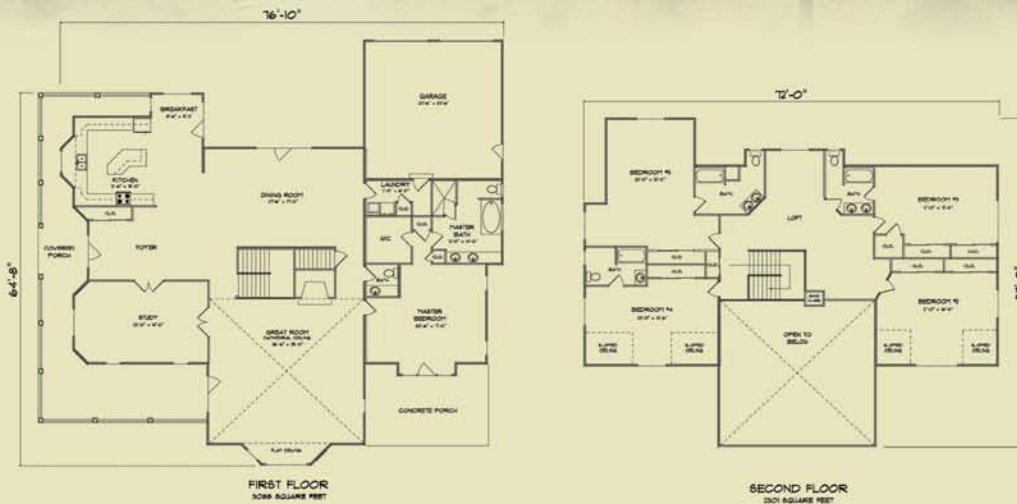
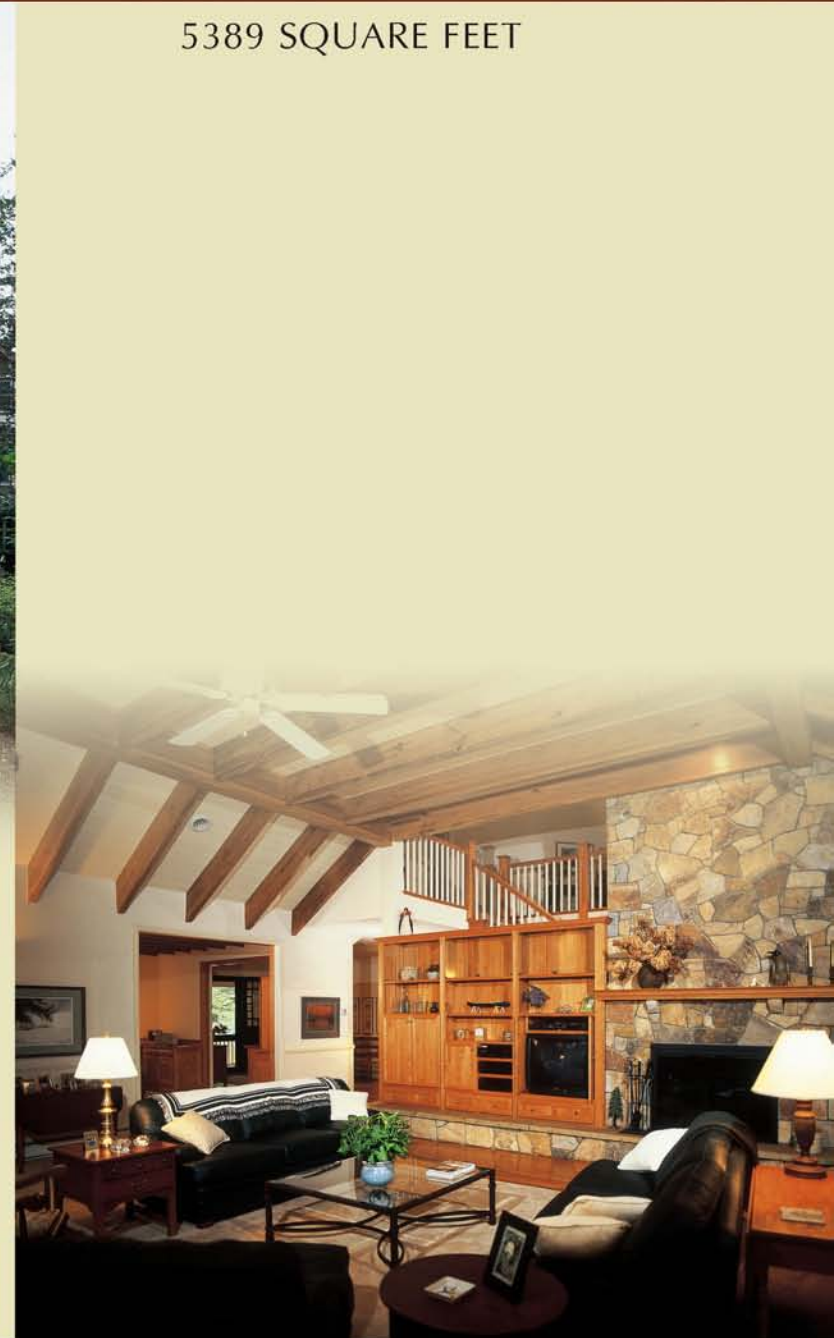


4106 SQUARE FEET



ALBERT COTTAGE

5389 SQUARE FEET





Home Design Contributors:
Greater Living Architecture, P.C.

STANDARD RESIDENTIAL SPECIFICATIONS

FLOOR DECK FRAMING

- Styrofoam sill seal 5-1/2".
- 2x6 pressure-treated wall plate.
- Built-up laminated veneer lumber girder, as required.
- Floor joists, as required.
- 3/4" T&G (Tongue & Groove) OSB sub-floor with sub-floor adhesive.
- 3" diameter round one-piece steel basement posts with adjustable threads.
- K.D. (knocked down) basement stairs; 2x10 treads and stringers, handrail and brackets.
- Cross bridging, wood 1x3.

EXTERIOR WALLS, INTERIOR PARTITIONS

- Panel height: 8'1-1/8".
- 2x6 studs, 16" OC (On Center) on exterior walls.
- 2x4 studs, 16" OC on garage walls.
- 2x4 studs, 16" OC on interior partitions.
- 2x6 studs, 16" OC on plumbing walls.
- 2x8 or 2x10 headers on bearing walls as necessary.
- Single bottom and double top plates.
- Corner and partition backers installed in panels.
- 7/16" OSB (Oriented Strand Board) sheathing on all exterior walls.
- House wrap, infiltration barrier will be included under siding. Siding is "wood grain" vinyl "double lap," in white or in colors, with options of fiber cement, cedar or many other available products.
- White vinyl "J" blocks, 8 per house included.
- Gable end framing, stud nailer for siding 16" OC.
NOTE: Gable end sheathing 7/16" OSB. If plywood wall sheathing option is used, then the gable would also receive the same. If insulated wall sheathing option is used, i.e., 1" R-Max, gable sheathing is 7/16" OSB.
2x6 partition cap for sheetrock nailer on first floor partitions; 1-1/2" metal ceiling angle or clips for sheetrock backer on ranch partitions or second floor partitions.

ROOF & CEILING FRAMING

- Truss system designed for installation on 24" centers, employing a roof pitch, with rake and eave overhangs per standard design. Roof design will vary with print.
- 2x4 lateral bracing supplied to tie roof truss system correctly.
- Felt paper, snow and ice shield, pre-finished metal drip edge, aluminum flashing, Certainteed Landmark shingles with 5" exposure and 30-year warranty.
- Certainteed standard roof colors: Moire Black, Weathered Wood, Burnt Sienna, Resawn Shake, Driftwood, Colonial Slate, Georgetown Gray, Cobblestone Gray, Hunter Green and Heather Blend.
- Nail-over ridge vent with nail-on 6" or 12" ladders.
- 1/2" roof plywood with clips.

EXTERIOR TRIM

- Aluminum fascia and vinyl soffit systems come in white or brown as standard colors.
- Colors to match siding are an additional option.
- Vinyl shutters per print. Colors: white, black, brown, gray, blue, green, or burgundy.

EXTERIOR DOORS & WINDOWS

- Exterior doors assembled in primed frame with vinyl brick mould applied.
- Main entrance door, metal clad, foam insulated, 3/0 x 6/8 with thermal break threshold applied.
- Service door, metal clad, foam insulated, 2/8 x 6/8 with thermal break threshold applied, no glass in house to garage door.
- Window styles per print, smart R glass with screens.
- Garage overhead doors are pre-finished metal, insulated with metal back and installed after rough opening is trimmed.
- The door is 194 series 9/0 x 7/0 or 16/0 x 7/0 in white, almond or brown. Garage door openers are included with each overhead door.

INTERIOR TRIM

- Interior doors are 1-3/8" hollow core, primed.
- All swing door units will have three hinges. Closet units are by-pass or bi-fold with jambs per plan.
- All units are pre-hung in finger joint clear pine veneer jambs.
- MDF door and windows picture-frame casing. Casing is 2-1/4", baseboard is 3".
- Both are modern "ranch" design in white pine.
- Closet shelving is vinyl white wire with supports as necessary.
- Door stops, sash locks as necessary.
- Assembled stairs, closed treads for two-story, splits, etc. Yellow pine risers, stringers, and treads.
- Stair parts, i.e. newels, balusters, and handrails, where designated.
- Bright Brass bedroom and bath privacy locksets, closet passage locksets and exterior locksets.

KITCHEN CABINETS, VANITIES & COUNTERTOPS

- Standard cabinets are Oak, Hickory, and Maple They are available with square or arch tops, and multiple colors. Hardware selections available.
- Counter and vanity tops are custom square edge countertops.
- Vanities, same style as kitchen cabinets, included only where shown on plans.
- Other cabinet styles are available.

LABOR & PREFABRICATION

- All exterior wall panels assembled with sheathing applied.
- Interior partitions assembled.
- Floor joists pre-cut to correct lengths.
- All interior doors pre-hung in veneer jambs where possible.
- Material delivered to job site on prearranged schedule.
- Tractor cranes available.

MISCELLANEOUS NOTES

- The outside dimensions of all Barden Homes are from frame to frame.
- Floor plan dimensions do not include exterior wall sheathing that extends beyond the foundation.

LOWER LEVELS OF ALL SPLIT LEVELS AND RAISED RANCHES


- Unfinished Lower Level: Furring panels for the lower level will be supplied as an optional extra.
- Finished Lower Level: 2x4 - furring panels will be supplied with studs 16" OC with single top and bottom plate, except garage area.



SUPPLIERS


Barden Homes provides your material selections from nationally recognized companies for the very best material for your home. We would like to dedicate this section to our recognized suppliers for their continued support and representation so faithfully throughout the years.

Siding, Windows, and More.




For over 55 years, America's building professionals have depended on Alside for the industry's finest products for beauty, durability and performance.

www.alside.com



Integrity windows and doors are built to perform.



from **MARVIN**
Windows and Doors

www.integritywindows.com

M4 MID-AMERICA
Siding Components™
A HANSON COMPANY

Shutters & Window Headers

Standard Master Shutter*

- Cathedral Open Louver or Williamsburg Raised Panel styles.
- 2 standard widths and 14 standard lengths.
- 16 colors plus a paintable option.

Custom Shutters

- Style A-Louver™, Style A-Panel™, or Board-N-Batten™ styles.
- Wide range of widths and lengths.
- 18 colors plus a paintable option.

Window Headers

- Flat Panel or Classic Dentil Profile.
- 6" or 9" height, in a width that fits virtually any window.
- 22 colors plus a paintable option.




THERMA TRU™
DOORS




The Most Preferred Brand in the Business™

JELD-WEN®
WINDOWS & DOORS



RELIABILITY for real life™




The Renaissance Collection™

Custom Steel Garage Doors

- The look of wood "carriage house" doors
- The long-lasting value of steel

Look for the Ribbon.
Your guarantee of genuine quality and service

The Genuine. The Original.



1-800-929-DOOR
www.OverheadDoor.com

There are no second chances for a good first impression. For the warm, inviting look without the bother of yearly maintenance, vinyl railings should be your choice.



BlueLinX
The building product names you know and the brands you trust.

1-800-853-2256



Architectural Details That Create Lasting Impressions

Imagine decor that not only beautifies but adds lasting value. Imagine products that will never need to be replaced. Imagine your home made better with Chemcrest's Moulded High Density Polyurethane Millwork. Set your imagination free.



www.chemcrest.com 1 800 665 6653

A Quality Home deserves Quality Windows.

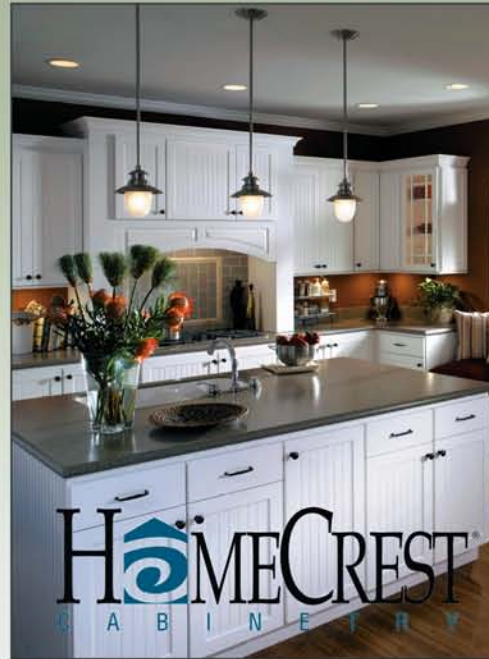


Made for you.
www.marvin.com



OUR SIDING RESISTS ROTTING, WARPING AND SWELLING. BESIDES THAT, IT'S JUST LIKE WOOD.

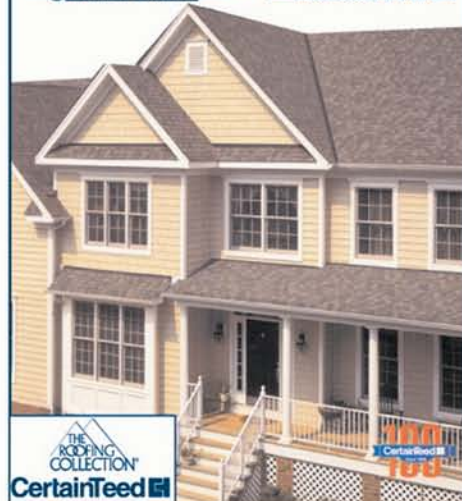
James Hardie® Siding Products
1-866-4-HARDIE
www.jameshardie.com



HomeCrest
C A B I N E T R Y

Teaming Up To Bring The Best To Barden Homes

BL & WHOLESALE SUPPLY AND ERIE MATERIALS BUILDING PRODUCT SOLUTIONS INC.



THE ROOFING COLLECTION
CertainFeed®

One Company. One focus.

Providing quality products, outstanding service, innovative ideas, competitive prices and superior value.

MOULDING & MILLWORK



Simonton windows and patio doors feature sturdy, fusion-welded profiles for remarkable strength and are made of premium vinyl that will never pit, peel or fade.



The world's favorite lock.



Available in a variety of distinctive finishes.



Better. Best.
ANSI Grade 2 Solid Brass

www.yalock.com



CULTURED STONE®
MANUFACTURED STONE VENEER

www.culturedstone.com
800.255.1727

THE PINK PANTHER® & ©1964-2006 Metro-Goldwyn-Mayer Studios Inc. Cultured Stone® is a registered trademark of Owens Corning.







BETTER. FASTER. SMARTER.



HOMES • COMMERCIAL • CHURCHES

The Barden & Robeson Corporation

2192 Thomas Albert Drive
Tully, NY 13159
800.945.9400
F: 315.295.2789

103 Kelly Ave
Middleport, NY 14105
800.724.0141
F: 716.735.3752

www.bardenhomes.com