



HOME

quality, precision, tradition

 **barden**
HOMES
1176 to 2080 Square Feet



MISSION
STATEMENT

Barden Homes will enthusiastically service our Independent Dealer Network with a quality product, in a competent, confident and professional manner, building trust, credibility, and a long-term partnership.



Photography may not necessarily represent standard design, pricing or specifications.



barden
HOMES

VISION STATEMENT

Barden Homes will be a vibrant, competitive business. Everything we do will focus on quality workmanship, responsiveness to our customers and integrity in our practices.

We will send a signal that is positive and optimistic while cultivating hard work with excitement. Opportunities for growth will be unlimited when we hold true to these habits.

The housing industry will continue to undergo significant change. We will embrace change and look for the opportunities that it creates as we seek to be the leaders and trendsetters in the marketplace.

Investment in technology and people will continue, building upon a long family tradition.

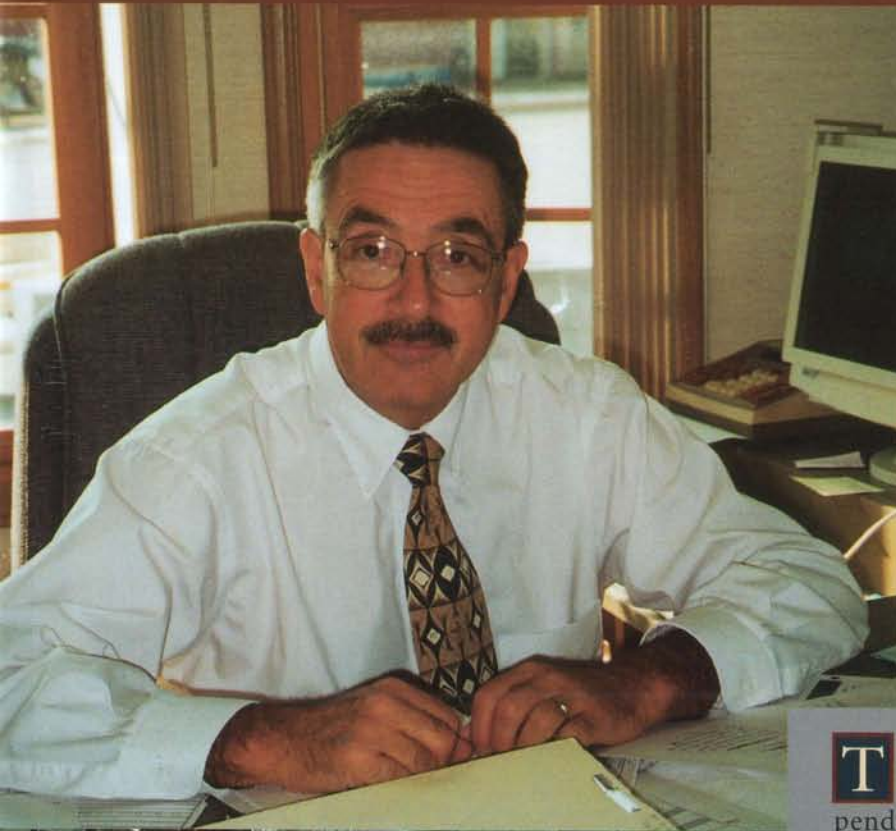
We will strive to be progressive and innovative in our thinking. We will build partnerships and alliances that will be the foundation for all future success.

We will be known for our integrity and intensity. We will seek challenges that test our abilities in order to have the opportunity to be successful. No project will be beyond our reach.

When we make a mistake, we will quickly be accountable and honest. No one that works hard will be without mistakes; learning from them will be part of our growth. We will always look forward and not backwards, for little success ever comes without risk.

Success is our goal, but it will be the result of our efforts.

Integrity, Dedication, Fairness, Compassion, Humor ... Ed Heselton



The Board of Directors, Management, The Barden Families, fellow employees, our independent dealers and customers want and need to express our sincere thanks, appreciation, gratitude and respect for a man that has given all of his adult working life to this organization.

The honor has been ours as we were a small part of your life. We will miss you greatly. The void that will be left from your departure will be filled not by one, but several individuals all trying to live up to your standards, optimism and level of consistent performance. We will watch as these individuals struggle to accomplish what came to you so naturally, thank you!

Tom Barden held out the greatest trust and regard for Ed, he would always say, "Ed will take care of it." Tom was right.

My Grandfather, Bryce, had a great deal of admiration and respect for Ed,

simply saying "that no one had more knowledge of our product."

Today, we have high tech drafting and engineering equipment, but we can never duplicate the warmth, respect, devotion and class that Ed Heselton has brought to our organization ... Thank you Ed for 42 years of dedication, wizardry and fun!!

MARK BARDEN

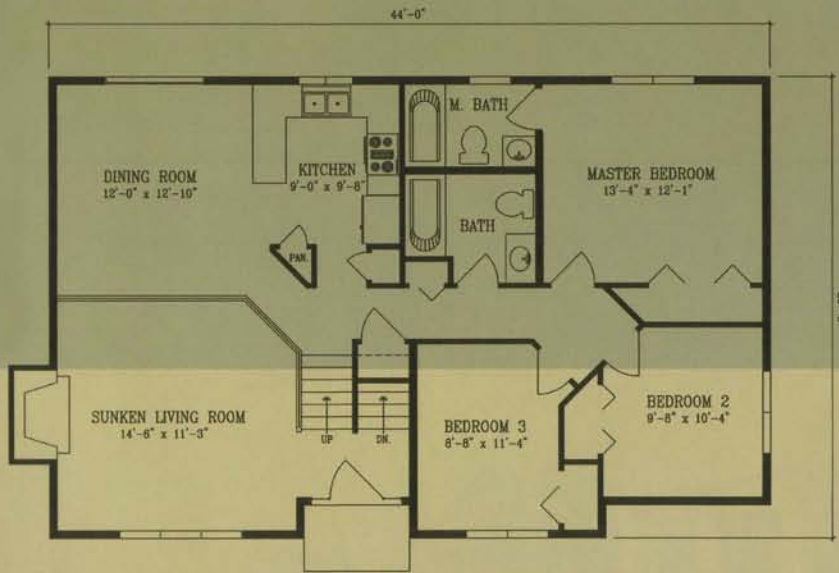
Thank you for the mentoring the last three years, I can only pray that your fair consistent manner will be with me and this organization always.

KEVIN TOMKO

It takes a special person to work 42 years for a company. Ed contributed continually to the company's success and growth by doing *any* job necessary to make it happen. Ed's ideas and contributions are at the top of the achievement list for the Barden & Robeson Corporation during his tenure. A positive attitude is important, but having a positive attitude for 42 years truly shows character. Thank you, Ed.

BOB GELDER



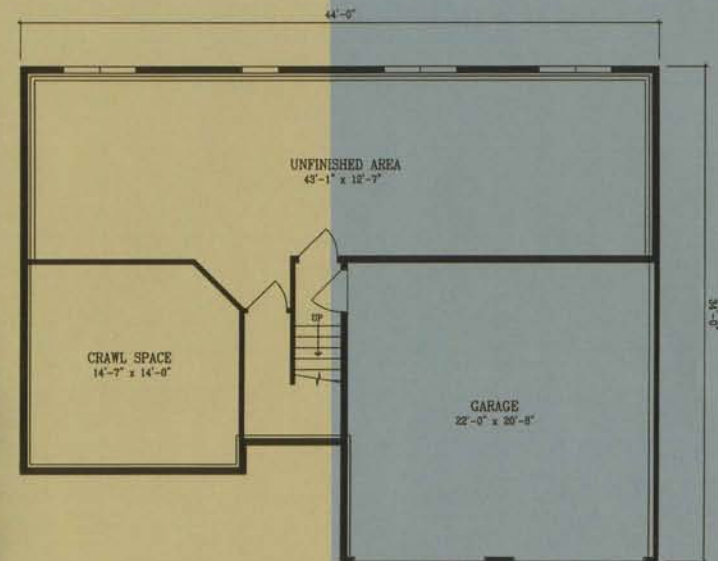


Upper Level 1199 Square Feet



Cumberland

1830 Square Feet

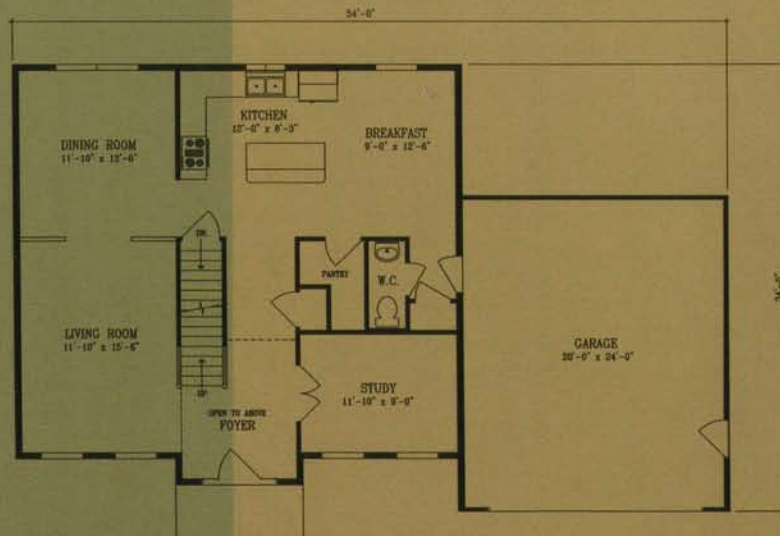


Lower Level 631 Square Feet

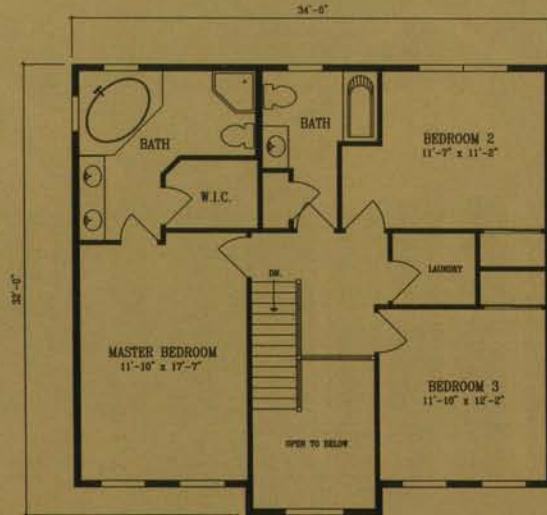


Bachorski Manor

2078 Square Feet



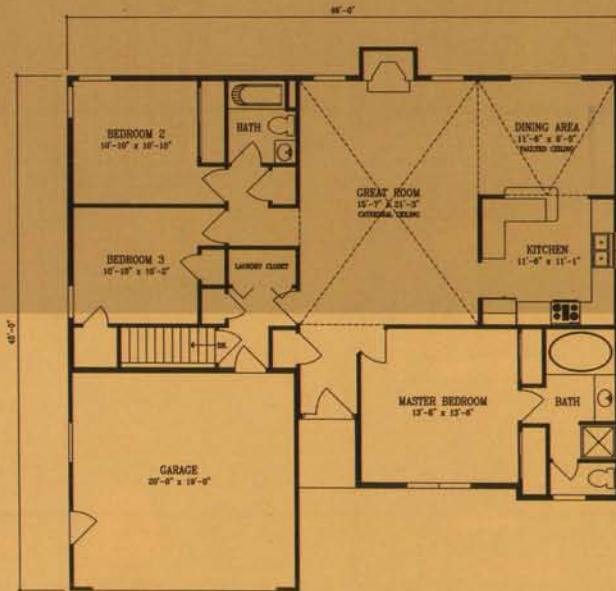
First Floor 1039 Square Feet



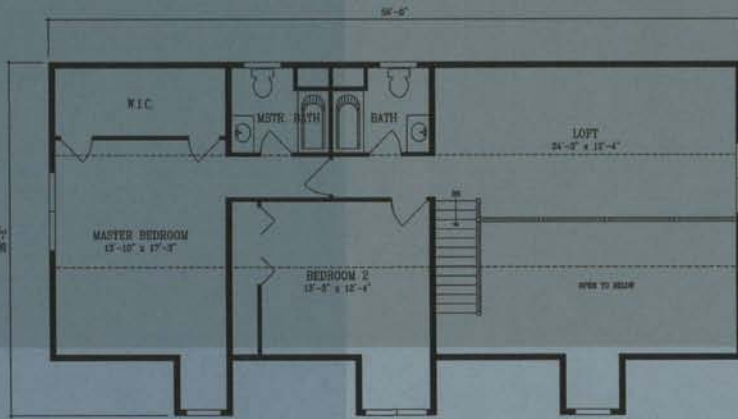
Second Floor 1039 Square Feet

Tiffany II

1453 Square Feet

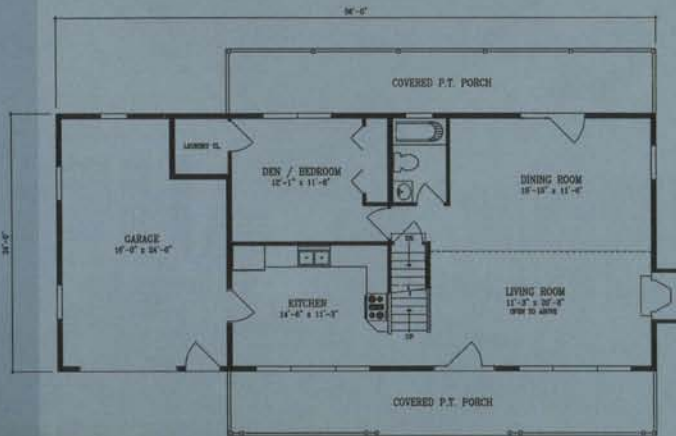


Please note that the screened door on the garage shown above is not a standard Barden Homes feature, but was added by the owner.

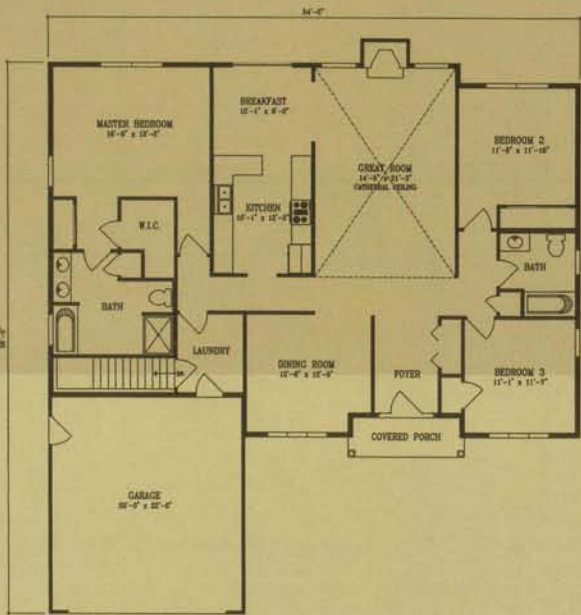


First Floor
960 Square Feet

Second Floor
1120 Square Feet

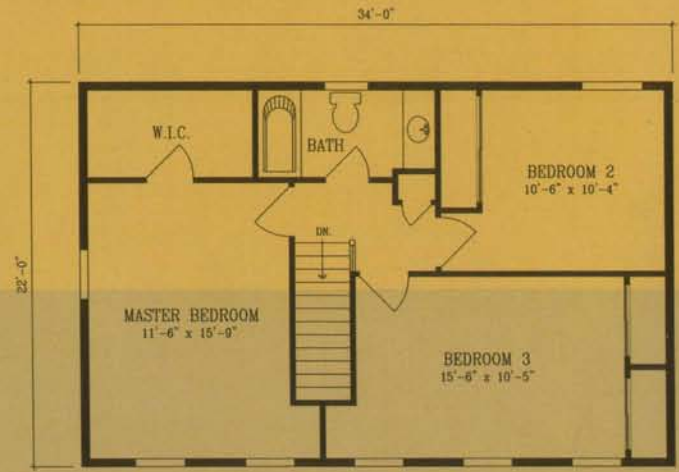


Alyce
2080 Square Feet



Sunset View

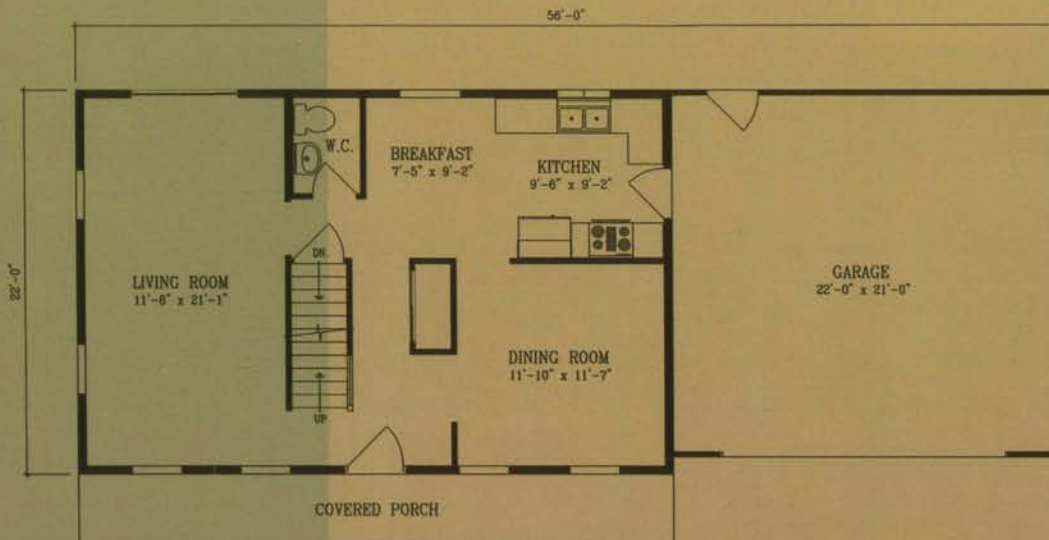
1930 Square Feet



Second Floor 748 Square Feet

Wellington II

1496 Square Feet



First Floor 748 Square Feet



Wellington III

1496 Square Feet



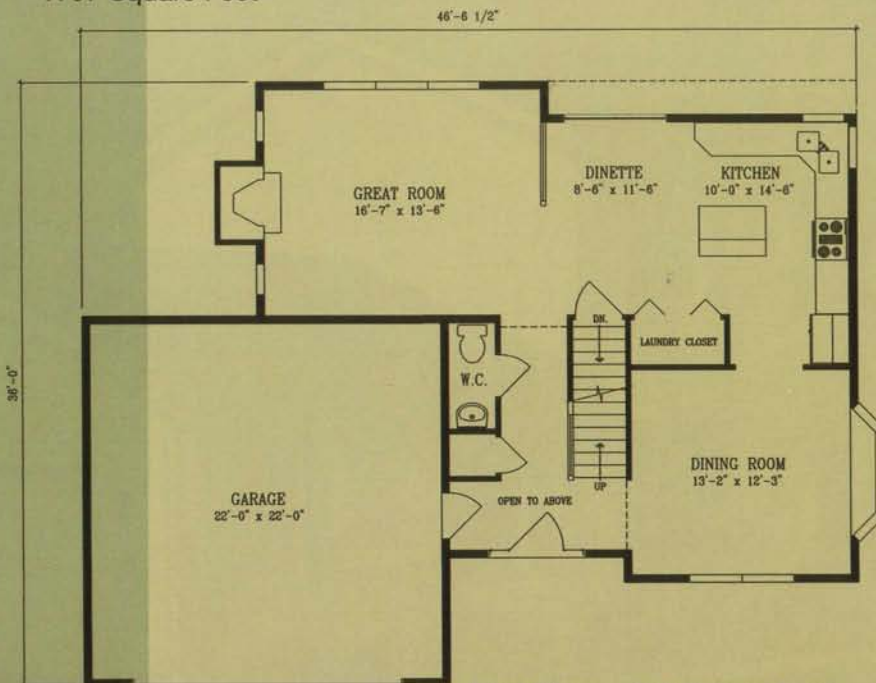
The Wellington III is a variation of the Wellington II, left, which features a covered porch, alternate window arrangement and turned gable over the garage door.



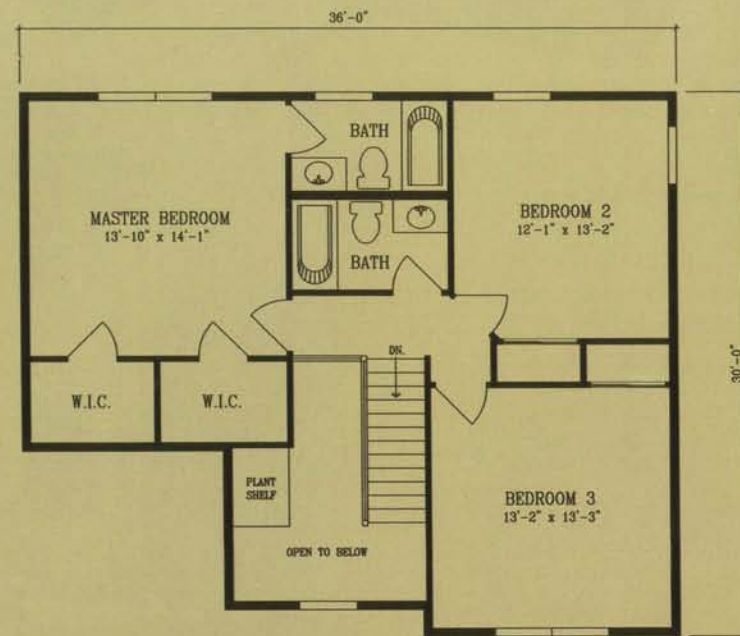


Hickory Park

1797 Square Feet



First Floor 850 Square Feet

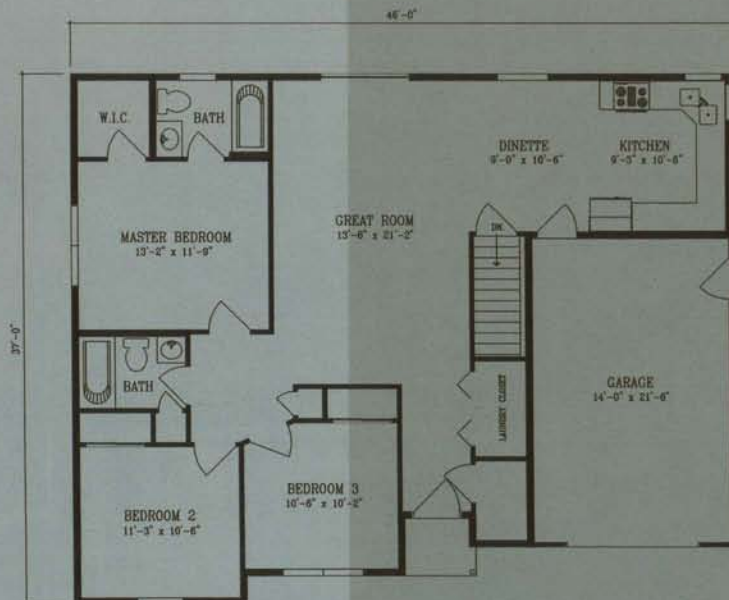


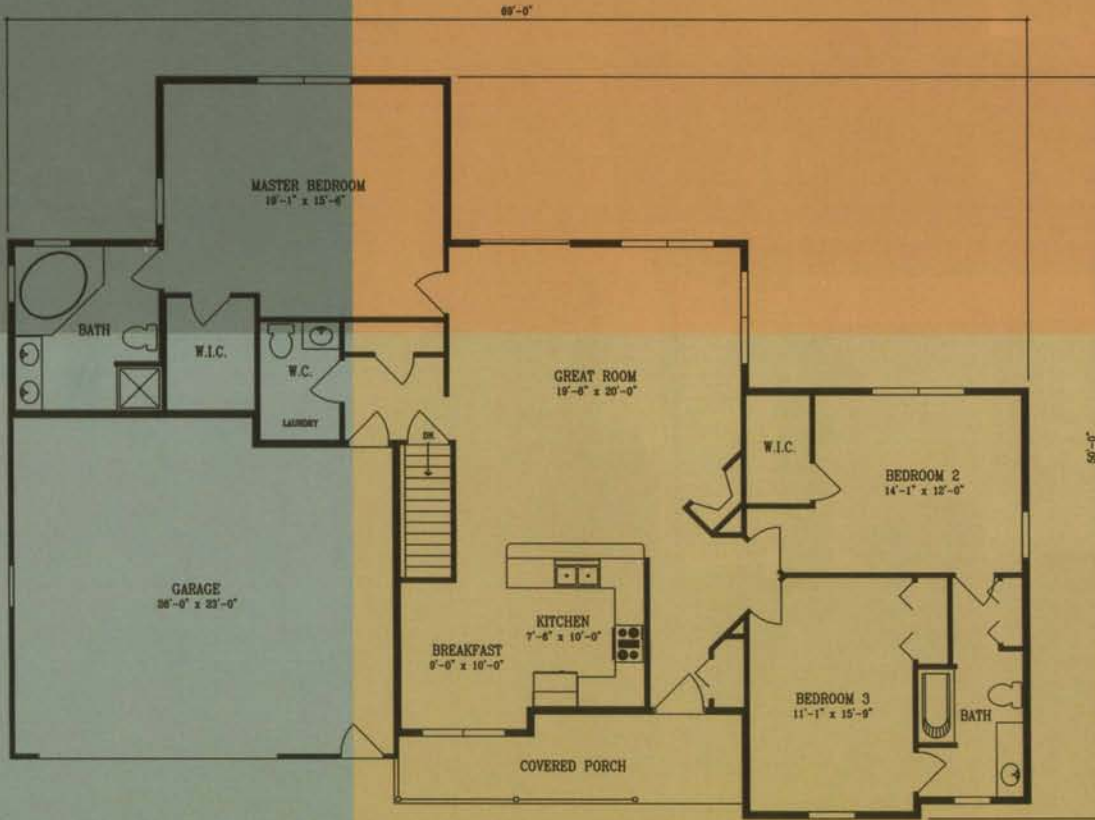
Second Floor 947 Square Feet



Odessa II

1278 Square Feet





DiPalma Grove

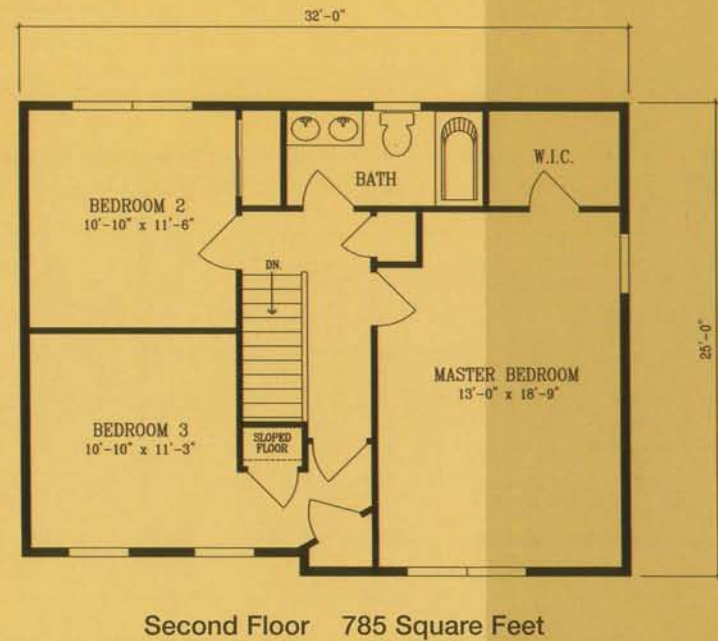
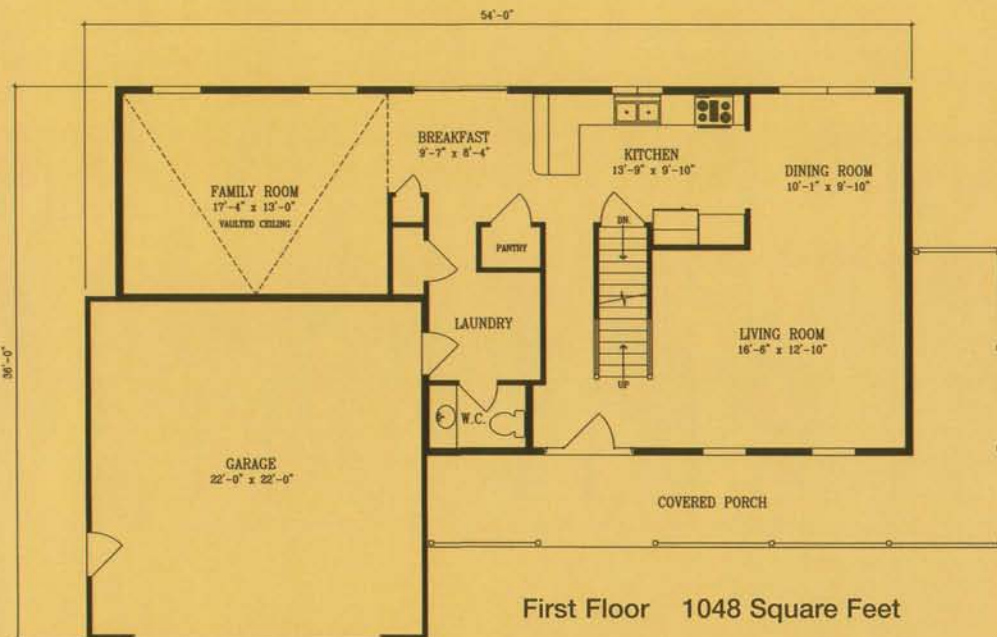
1865 Square Feet





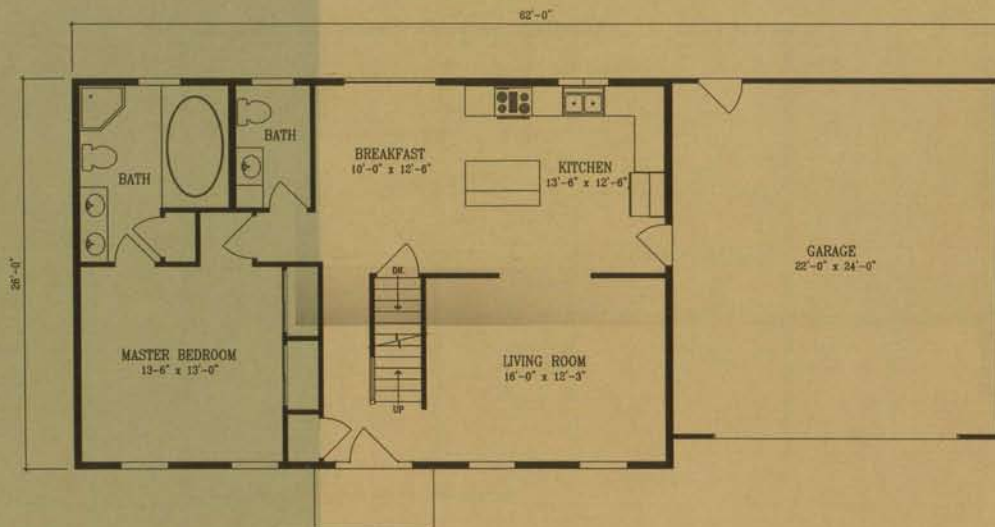
Darcee

1833 Square Feet

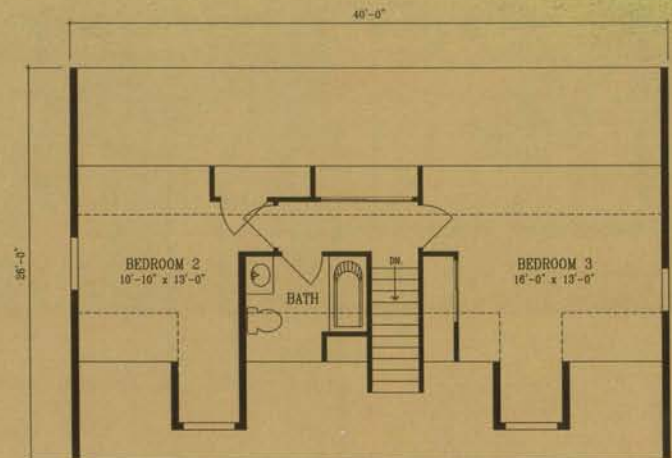


New Haven II

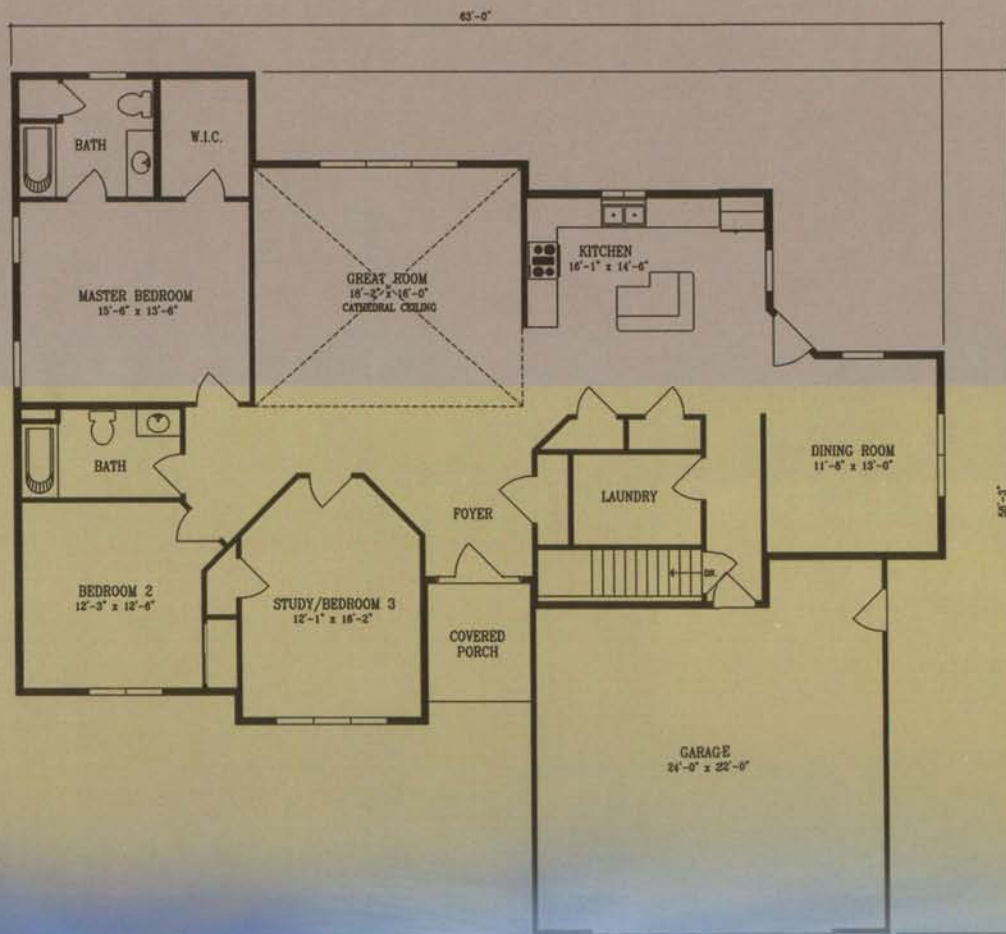
1605 Square Feet



First Floor 1040 Square Feet



Second Floor 565 Square Feet



Baron Estates

1964 Square Feet





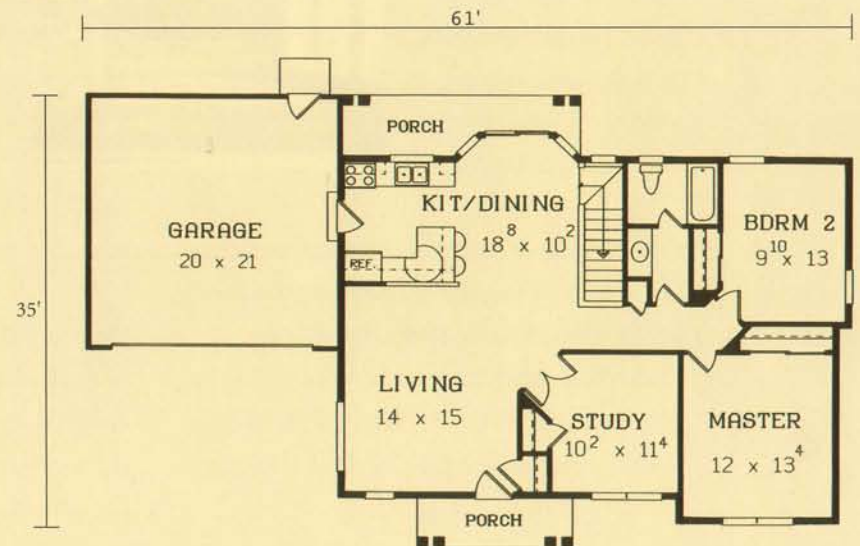
Barden Homes has transformed major difficulties in home building into minor inconveniences, and their substantially short construction time is a major benefit to home buyers who save on construction loan interest.





Davis Bay

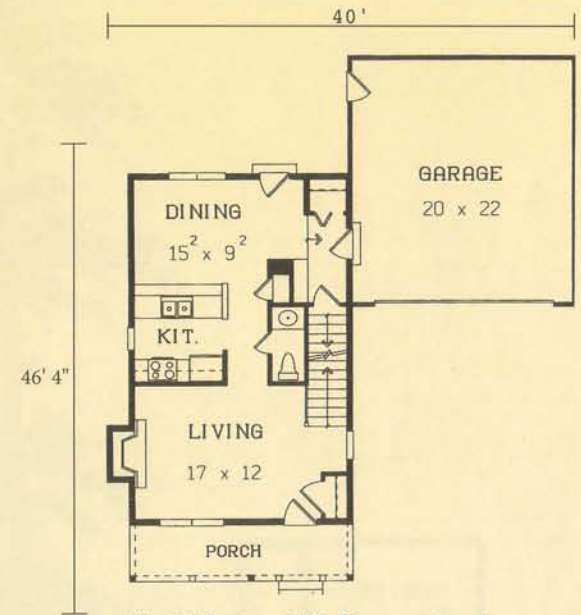
1176 Square Feet



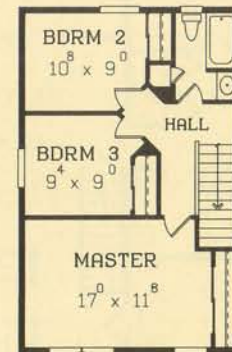


Patricia

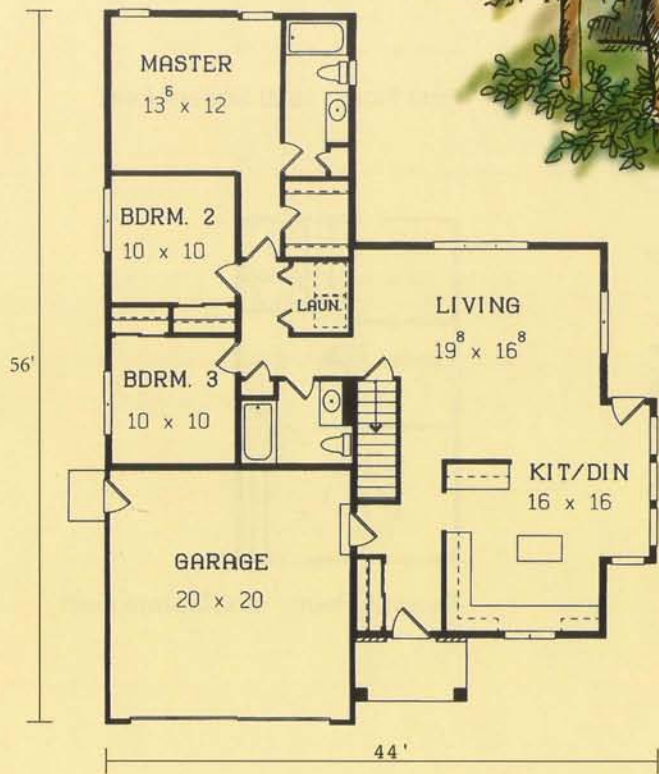
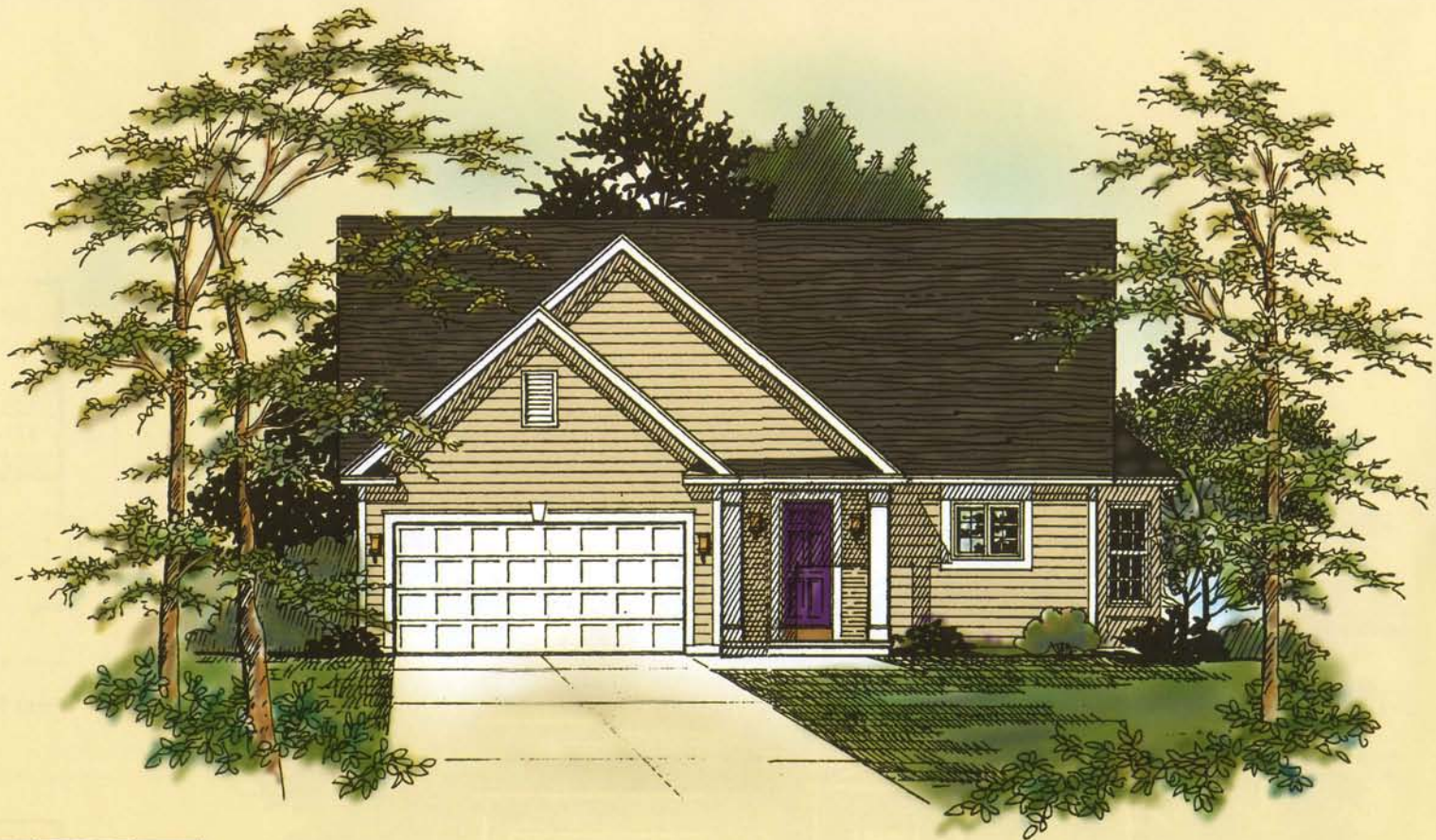
1240 Square Feet



First Floor 620 Square Feet



Second Floor 620 Square Feet



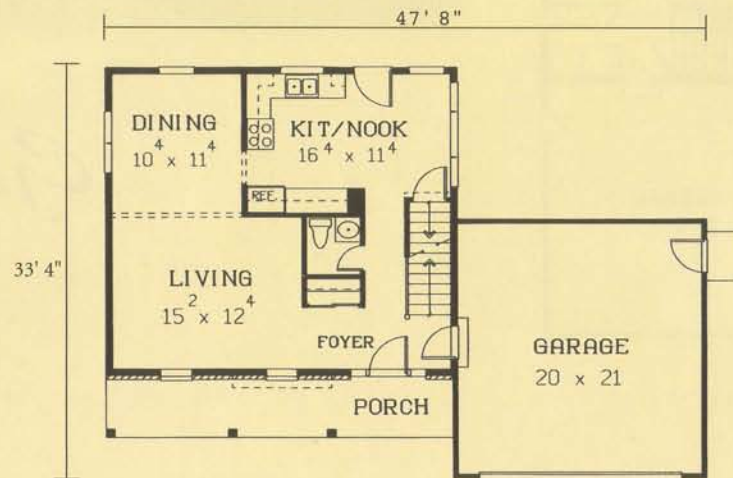
Maren's Gate

1400 Square Feet

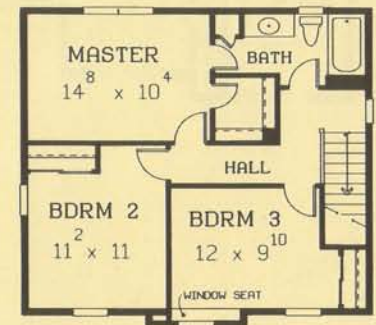


Slade Harbor

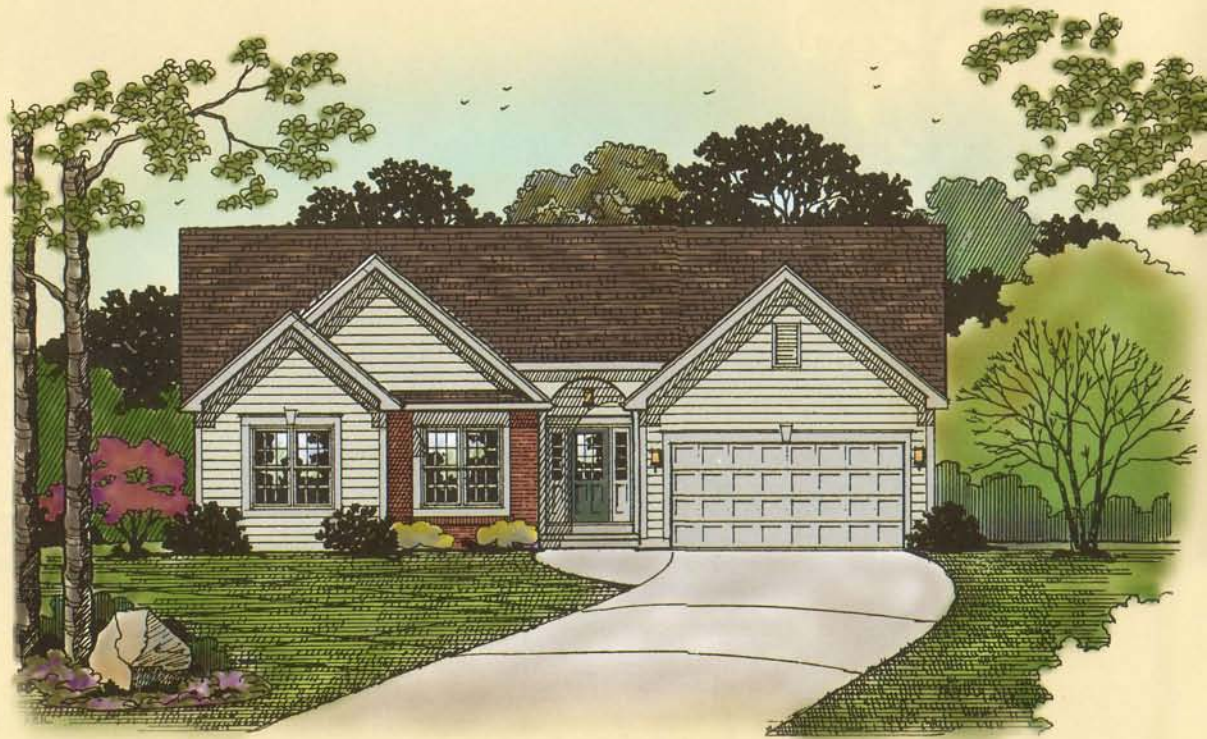
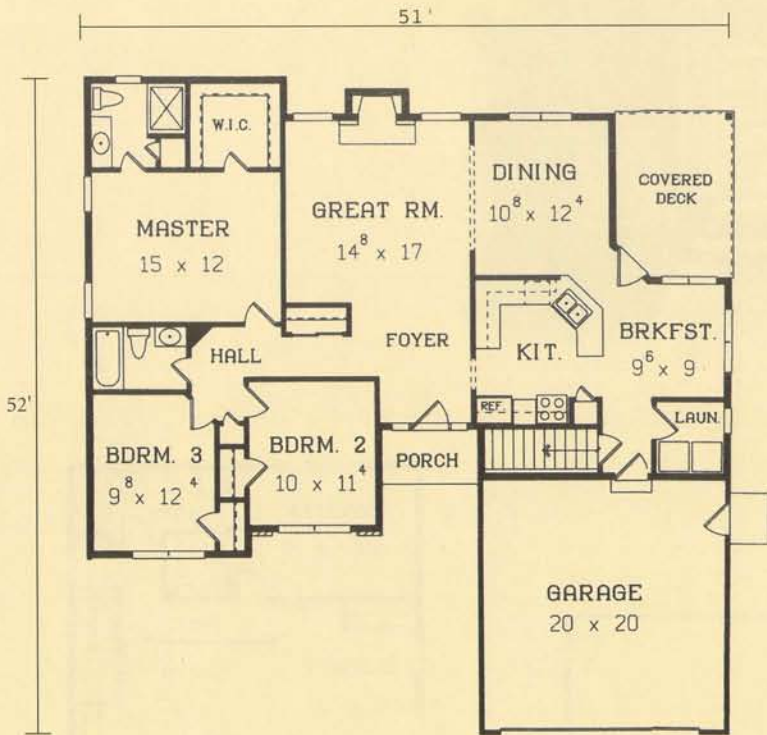
1408 Square Feet



First Floor 700 Square Feet



Second Floor 708 Square Feet

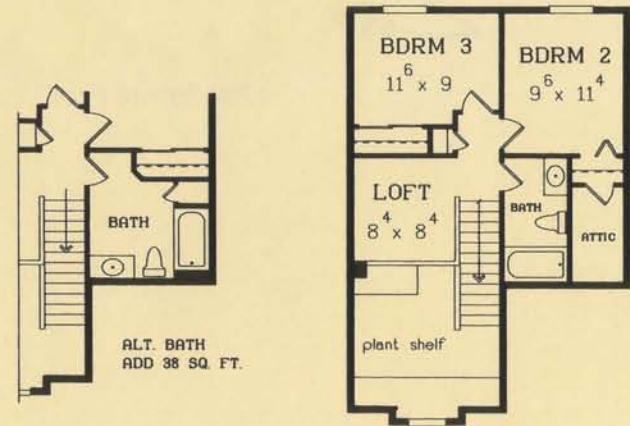
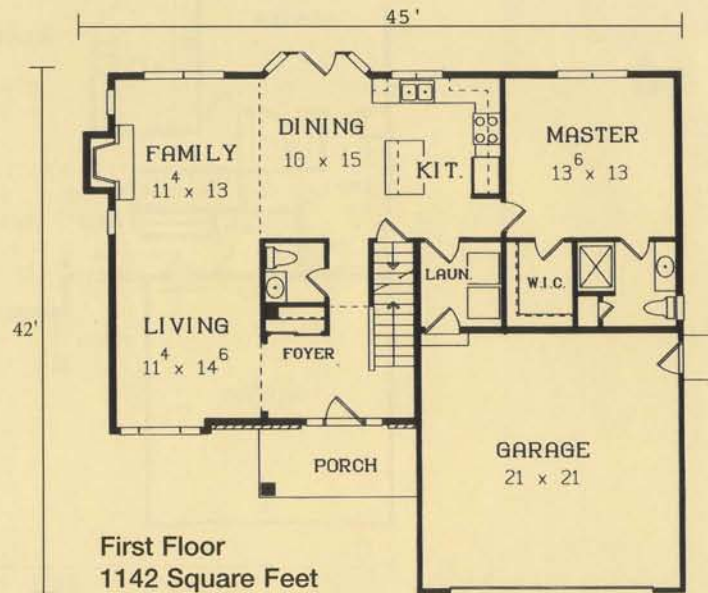


Gabe's Brook

1502 Square Feet

Tomko's Terrace

1605 Square Feet

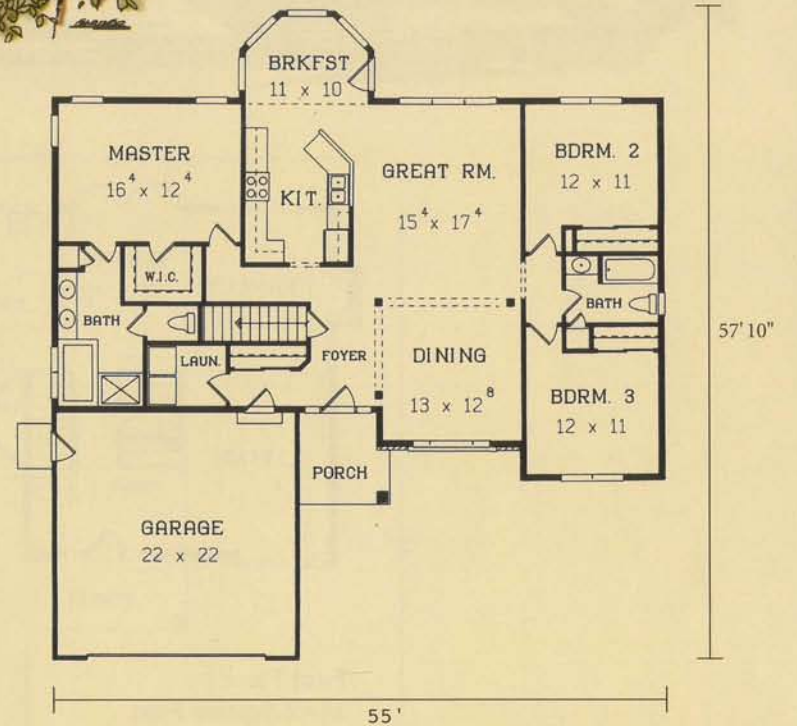


Second Floor 463 Square Feet



Edmond's Point

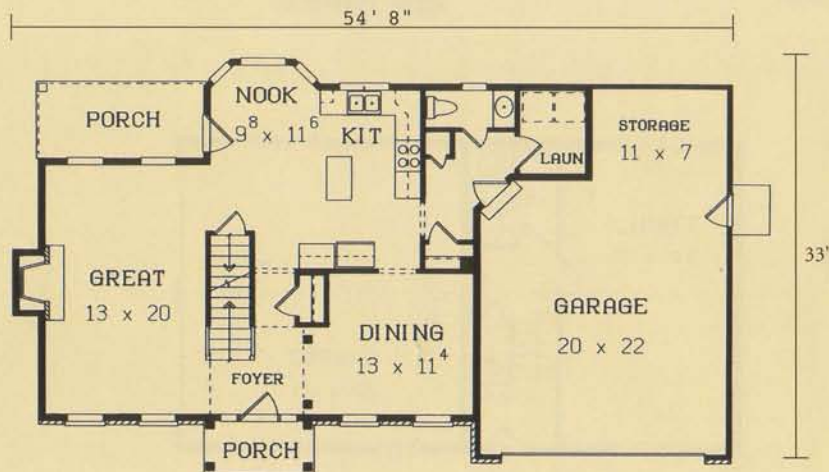
1739 Square Feet



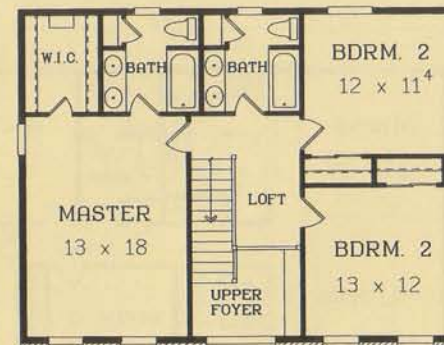


Willcox

1839 Square Feet



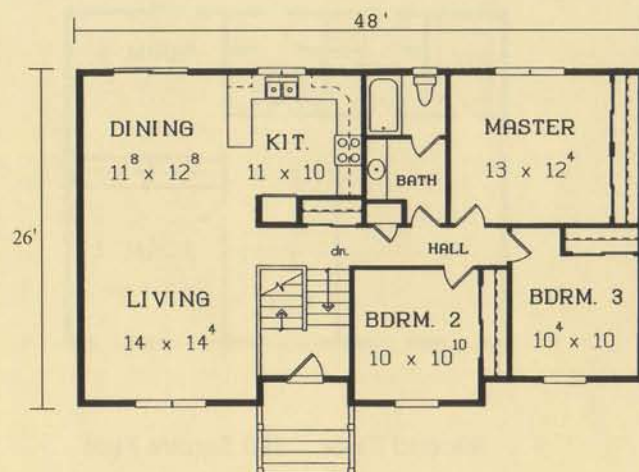
First Floor 950 Square Feet



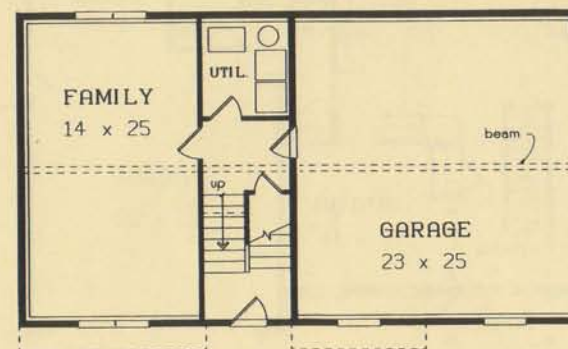
Second Floor 889 Square Feet

Amylee

1835 Square Feet



First Floor 1250 Square Feet



Second Floor 585 Square Feet



barden
HOMES



*Middleport, New York
Homer, New York*